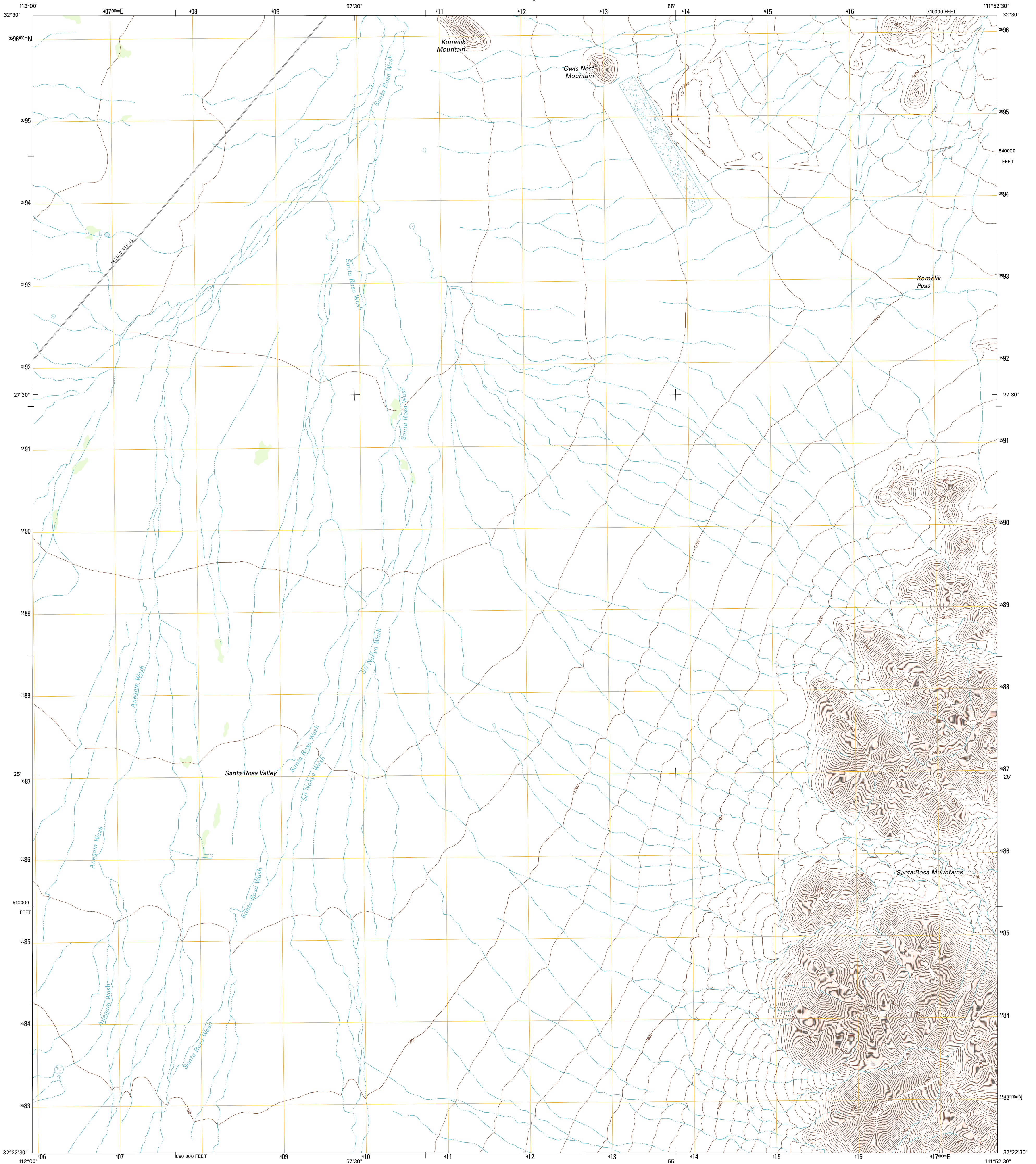




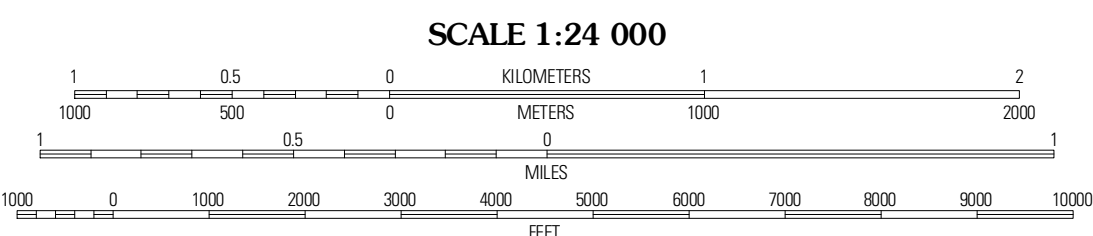
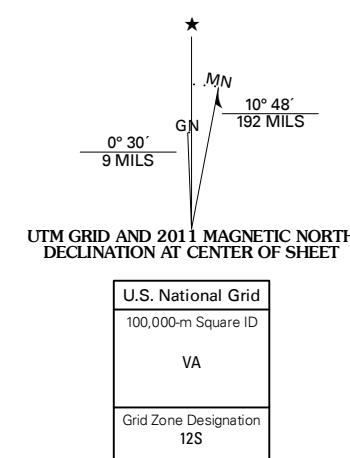
U.S. DEPARTMENT OF THE INTERIOR  
U. S. GEOLOGICAL SURVEY



SANTA ROSA MOUNTAINS NW QUADRANGLE  
ARIZONA-PIMA CO.  
7.5-MINUTE SERIES



Produced by the United States Geological Survey  
North American Datum of 1983 (NAD83)  
World Geodetic System of 1984 (WGS84). Projection and  
1 000-meter grid: Universal Transverse Mercator, Zone 12S  
10 000-foot ticks: Arizona Coordinate System of 1983  
(central zone)

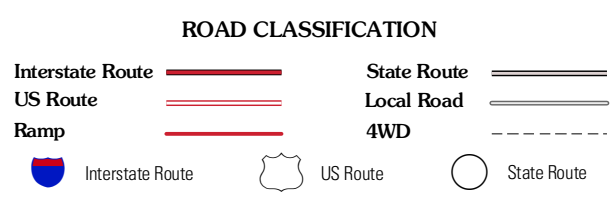


CONTOUR INTERVAL 20 FEET  
NORTH AMERICAN VERTICAL DATUM OF 1988  
This map was produced to conform with the  
National Geospatial Program US Topo Product Standard, 2011.  
A metadata file associated with this product is draft version 0.6.1



QUADRANGLE LOCATION

Kohak	North Komelik	Silver Reef Mountains SE
Drew Spring Well	Santa Rosa Mountains NW	Santa Rosa Mountains NE
Santa Rosa	Santa Rosa Mountains SW	Santa Rosa Mountains SE



SANTA ROSA MOUNTAINS NW, AZ  
2011

ADJOINING 7.5 QUADRANGLES