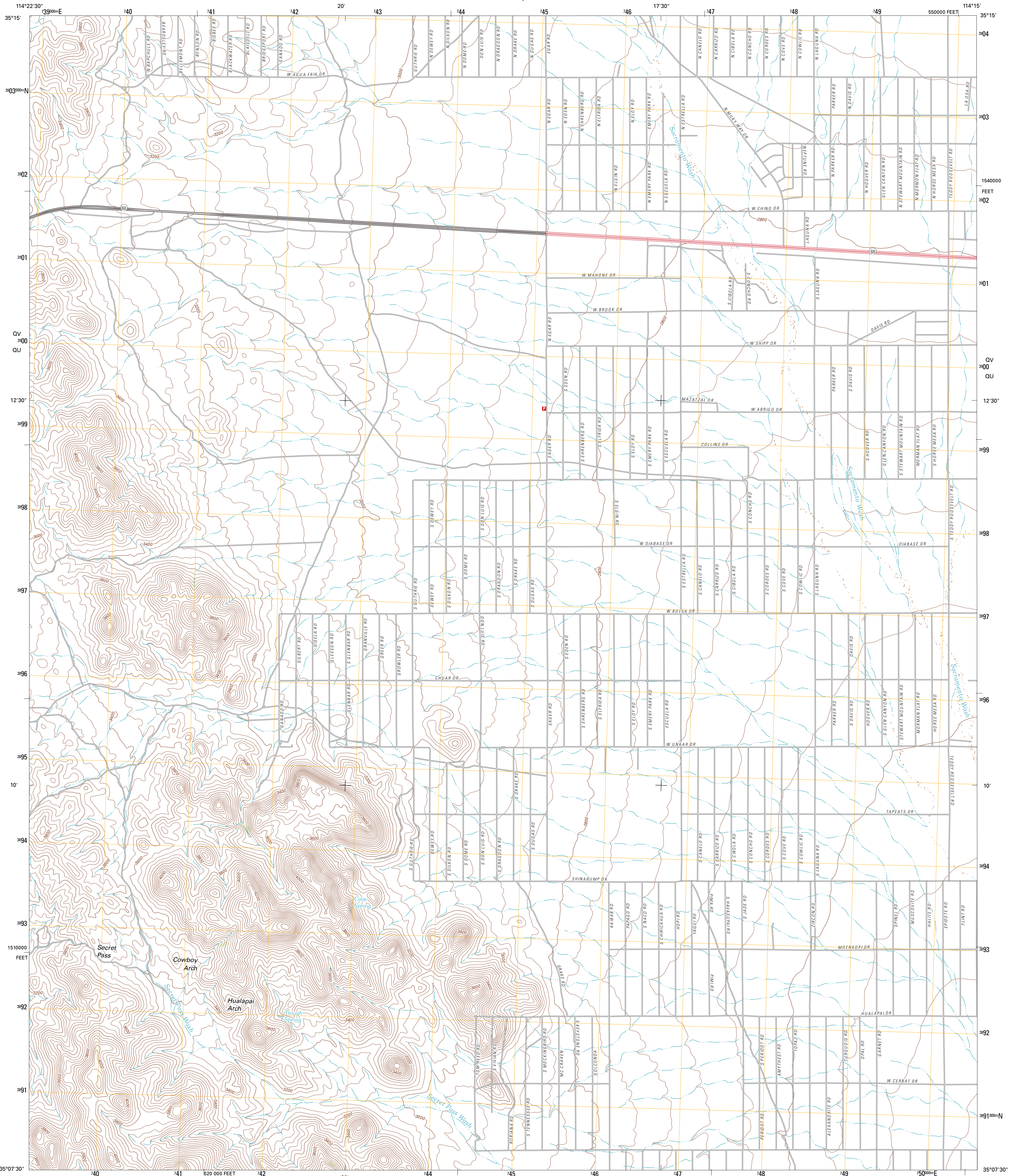




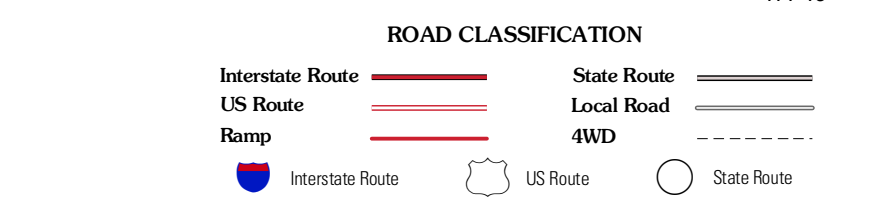
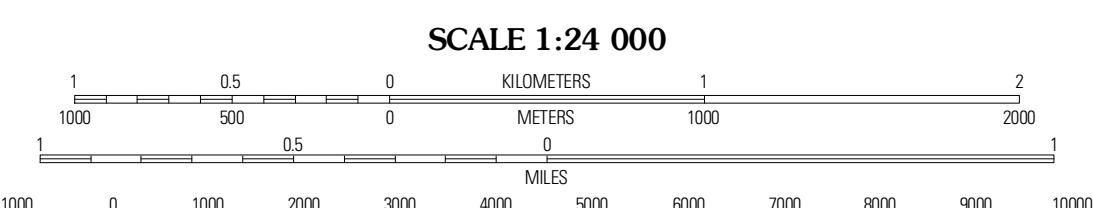
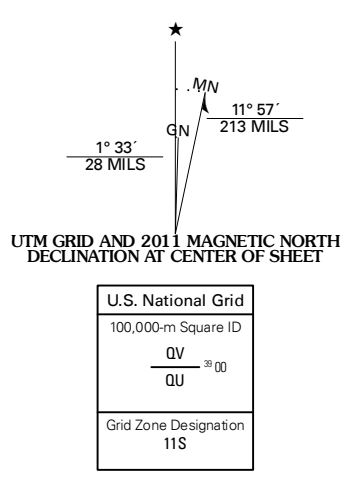
U.S. DEPARTMENT OF THE INTERIOR
U. S. GEOLOGICAL SURVEY



SECRET PASS QUADRANGLE
ARIZONA-MOHAVE CO.
7.5-MINUTE SERIES



Produced by the United States Geological Survey
North American Datum of 1983 (NAD83)
World Geodetic System of 1984 (WGS84). Projection and
1 000-meter grid; Universal Transverse Mercator, Zone 11S
10 000-foot ticks; Arizona Coordinate System of 1983 (west
zone)



QUADRANGLE LOCATION

| | | |
|--------------|-------------------------|------------|
| Burns Spring | Grasshopper Junction SE | Cerbat |
| Union Pass | Secret Pass | Kingman NW |
| Outman | Mount Nutt | Kingman SW |

CONTOUR INTERVAL 40 FEET
NORTH AMERICAN VERTICAL DATUM OF 1988

This map was produced to conform with the
National Geospatial Program US Topo Product Standard, 2011.
A metadata file associated with this product is draft version 0.6.1

SECRET PASS, AZ
2011

ADJOINING 7.5 QUADRANGLES