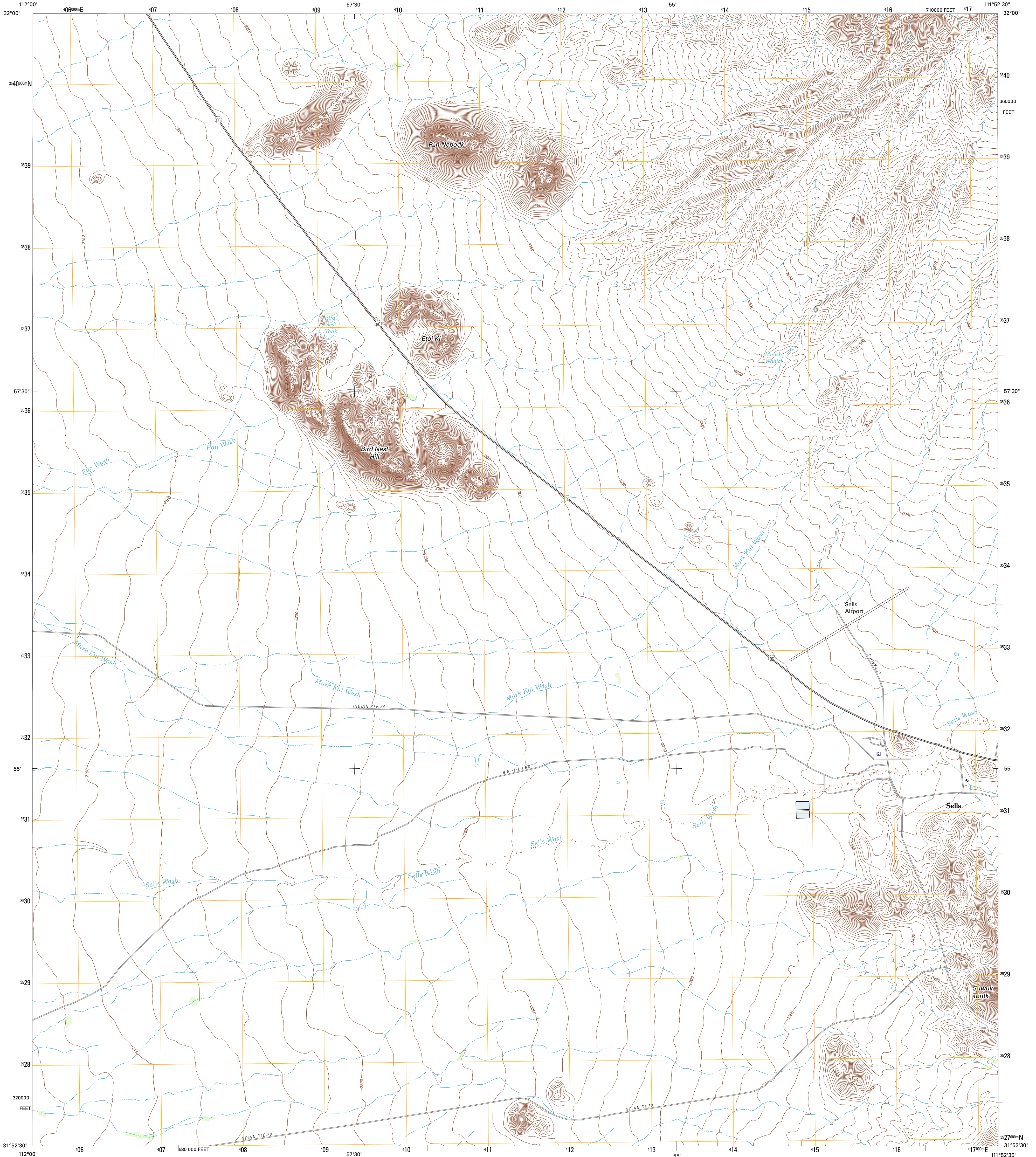




U.S. DEPARTMENT OF THE INTERIOR  
U. S. GEOLOGICAL SURVEY

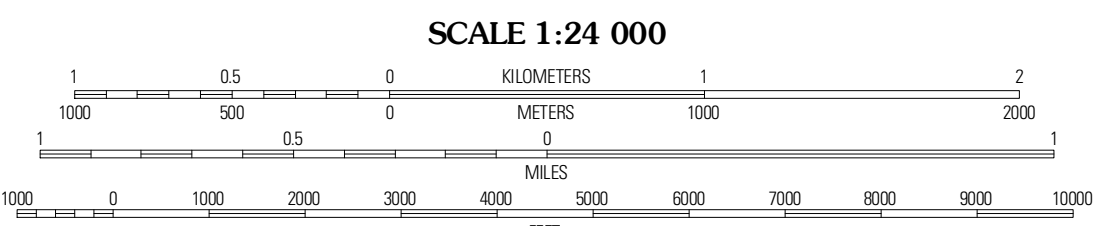
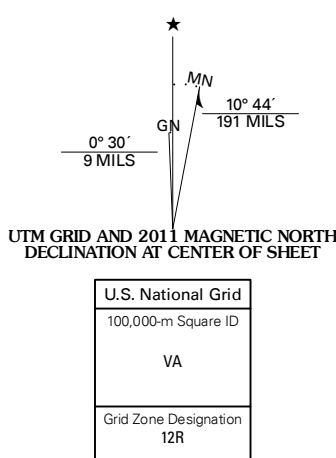


SELLS WEST QUADRANGLE  
ARIZONA-PIMA CO.  
7.5-MINUTE SERIES



Produced by the United States Geological Survey  
North American Datum of 1983 (NAD83)  
World Geodetic System of 1984 (WGS84). Projection and  
1 000-meter grid: Universal Transverse Mercator, Zone 12R  
Contours: National Elevation Dataset, 2003  
(contour-foot ticks: Arizona Coordinate System of 1983  
(central zone))

Imagery: NIP, June 2010  
©2006-2011 TomTom  
Names: GNIS, 2011  
Hydrography: National Hydrography Dataset, 2007  
Contours: National Elevation Dataset, 2003  
Boundaries: Census, IBWC, IBC, USGS, 1972 - 2010



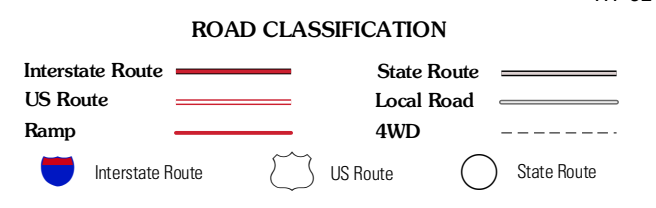
CONTOUR INTERVAL 10 FEET  
NORTH AMERICAN VERTICAL DATUM OF 1988

This map was produced to conform with the  
National Geospatial Program US Topo Product Standard, 2011.  
A metadata file associated with this product is draft version 0.6.1



QUADRANGLE LOCATION

Vainom Kuj	Ko Vaya	Comobabi
Gu Odak	Sells West	Sells East
Chakut Kuk	Cocok	Topawa



SELLS WEST, AZ  
2011

ADJOINING 7.5 QUADRANGLES