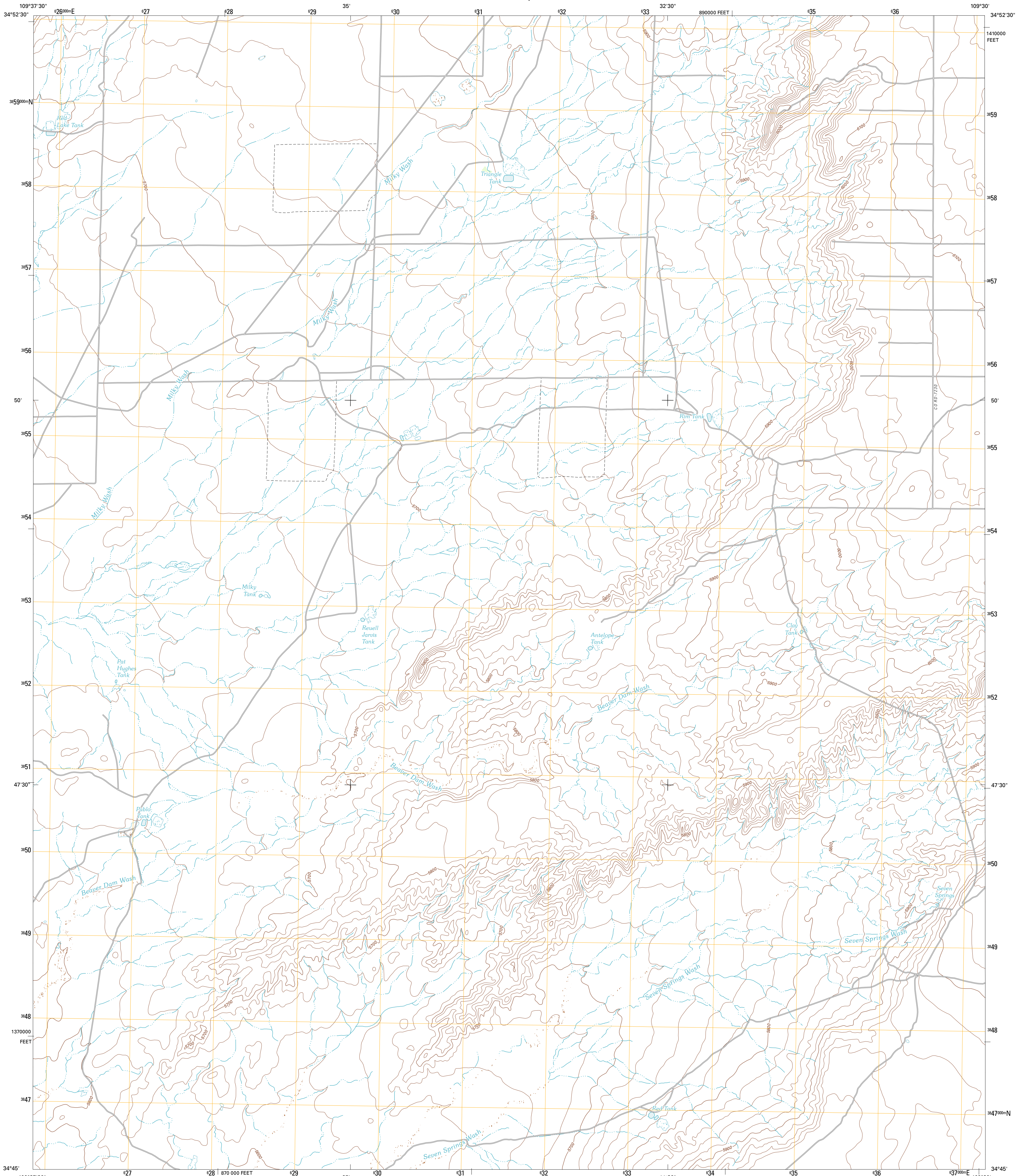




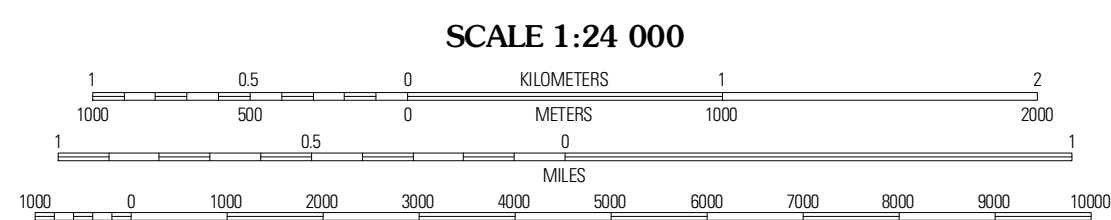
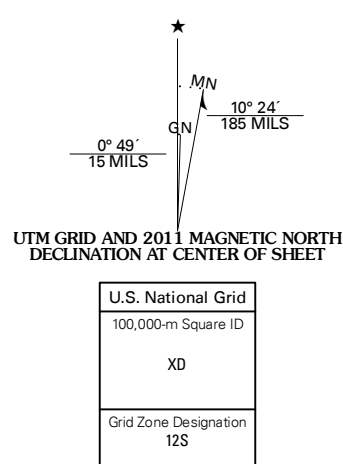
U.S. DEPARTMENT OF THE INTERIOR  
U. S. GEOLOGICAL SURVEY



SEVEN SPRINGS QUADRANGLE  
ARIZONA-APACHE CO.  
7.5-MINUTE SERIES



Produced by the United States Geological Survey  
North American Datum of 1983 (NAD83)  
World Geodetic System of 1984 (WGS84). Projection and  
1 000-meter grid: Universal Transverse Mercator, Zone 12S  
10 000-foot ticks: Arizona Coordinate System of 1983 (east  
zone)



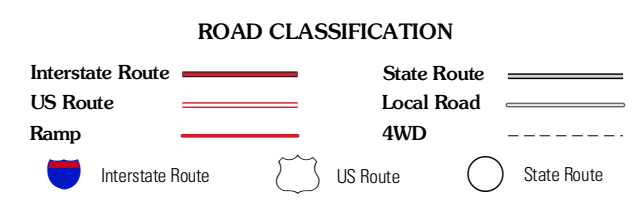
CONTOUR INTERVAL 20 FEET  
NORTH AMERICAN VERTICAL DATUM OF 1988  
This map was produced to conform with the  
National Geospatial Program US Topo Product Standard, 2011.  
A metadata file associated with this product is draft version 0.6.1



QUADRANGLE LOCATION

Surrel Horse Mesa	Ninemile Seep	Hogan Well
Milky Ranch	Seven Springs	Long H Ranch
Potter Mesa Tank	Stinking Springs Mountain	Cedar Lake Wash

ADJOINING 7.5 QUADRANGLES



SEVEN SPRINGS, AZ  
2011