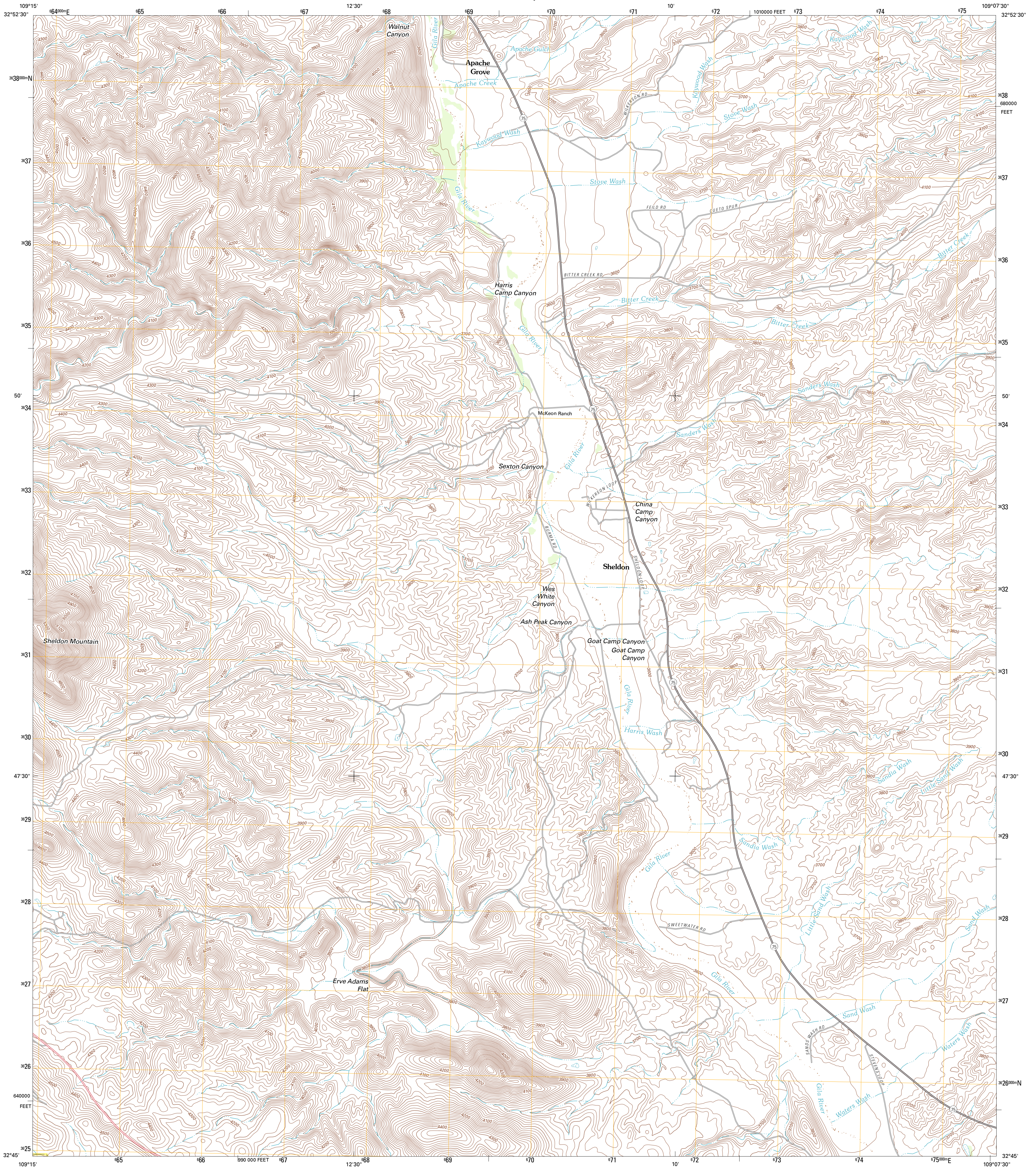




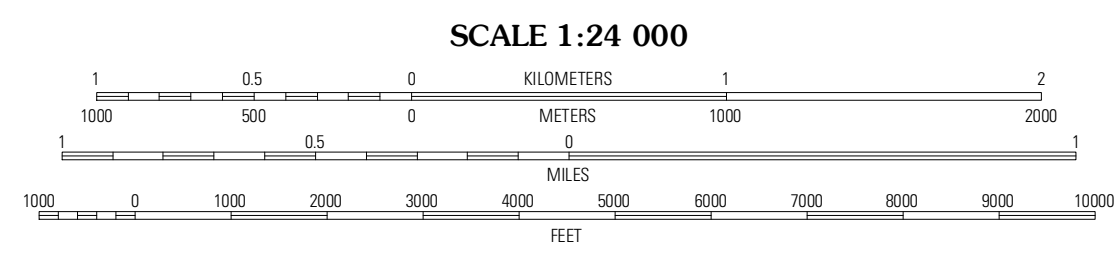
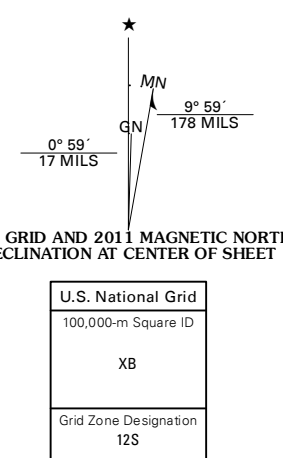
U.S. DEPARTMENT OF THE INTERIOR  
U. S. GEOLOGICAL SURVEY



**SHELDON QUADRANGLE**  
ARIZONA  
7.5-MINUTE SERIES



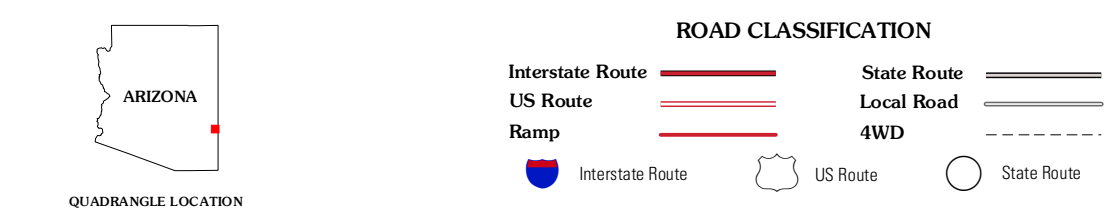
Produced by the United States Geological Survey  
North American Datum of 1983 (NAD83)  
World Geodetic System of 1984 (WGS84). Projection and  
1 000-meter grid: Universal Transverse Mercator, Zone 12S  
10 000-foot ticks: Arizona Coordinate System of 1983 (east  
zone)



CONTOUR INTERVAL 20 FEET  
NORTH AMERICAN VERTICAL DATUM OF 1988  
This map was produced to conform with the  
National Geospatial Program US Topo Product Standard, 2011.  
A metadata file associated with this product is draft version 0.6.1

Imagery.....NAP, August 2010  
Roads.....©2006-2011 TomTom  
Names.....GNIS, 2011  
Hydrography.....National Hydrography Dataset, 2010  
Contours.....National Elevation Dataset, 2002  
Boundaries.....Census, IBWC, IBC, USGS, 1972 - 2010

U.S. National Grid 100,000-m Square ID	XB
Grid Zone Designation	12S



QUADRANGLE LOCATION

Guthrie	York	Tille Hall Peak
Ash Peak	Sheldon	Goat Camp Spring
Whitlock Mountain NE	Hot Well	Duncan

**SHELDON, AZ**  
2011

ADJOINING 7.5' QUADRANGLES