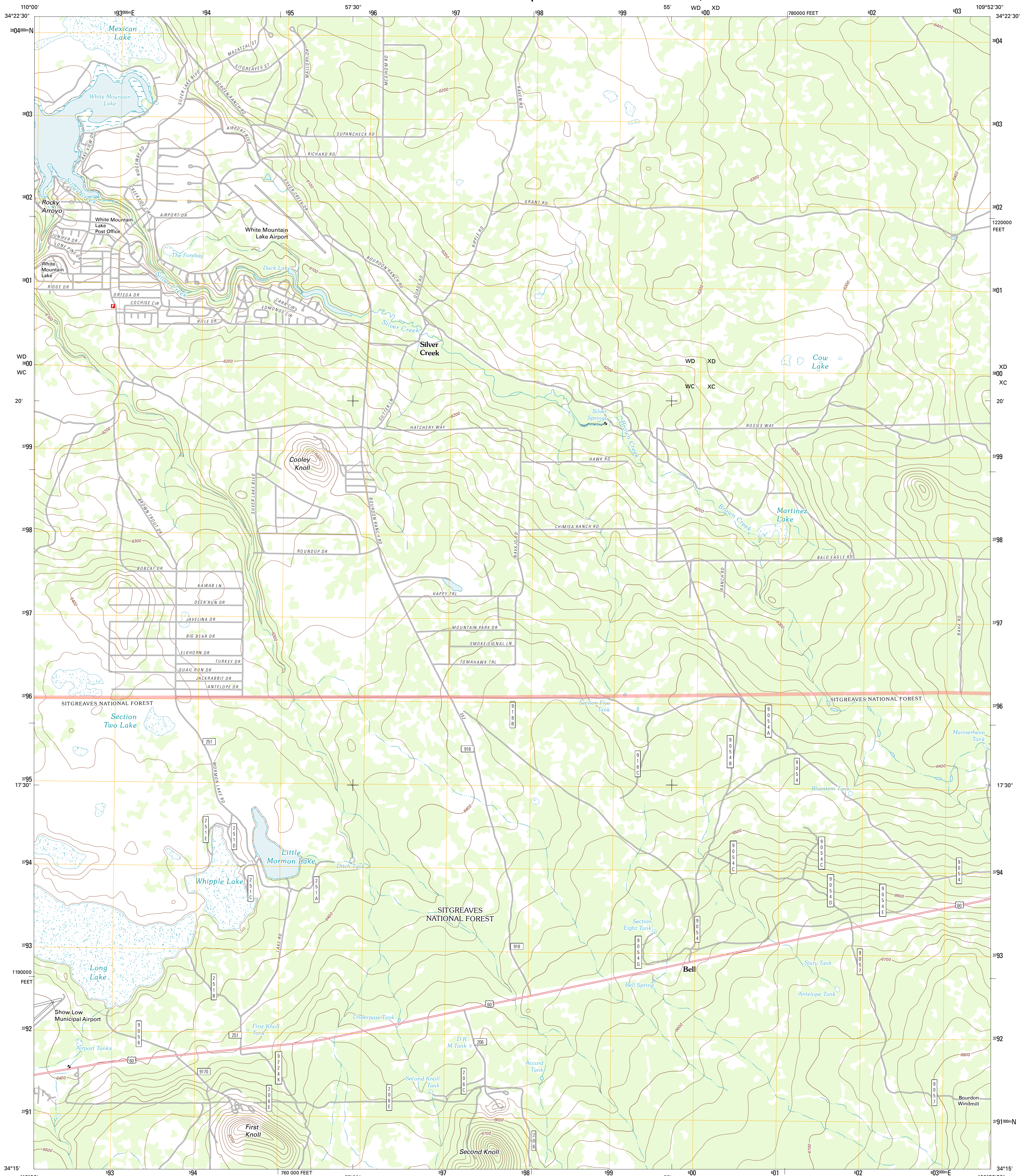




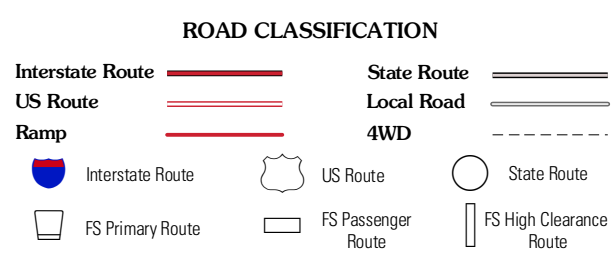
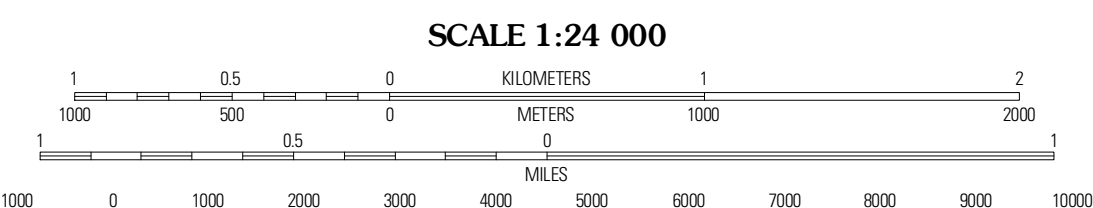
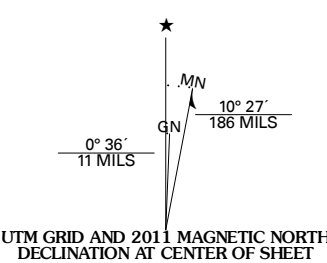
U.S. DEPARTMENT OF THE INTERIOR
U. S. GEOLOGICAL SURVEY



SILVER SPRINGS QUADRANGLE
ARIZONA-NAVAJO CO.
7.5-MINUTE SERIES



Produced by the United States Geological Survey
North American Datum of 1983 (NAD83)
World Geodetic System of 1984 (WGS84) Projection and
1 000-meter grid: Universal Transverse Mercator, Zone 12S
10 000-foot ticks: Arizona Coordinate System of 1983 (east zone)



QUADRANGLE LOCATION

Taylor	Mesa Redonda NW	Mesa Redonda
Show Low North	Silver Springs	Ortega Mountain
Show Low South	Lakeside	Sponseller Mountain

Imagery: N.A.P., June 2010 - September 2010
Roads: ©2006-2011 TomTom
Roads within US Forest Service Lands: FSTopo Data with limited Forest Service updates, 2009
Names: ©2011 GNIS
Hydrography: National Hydrography Dataset, 2002
Contours: National Elevation Dataset, 2002
Boundaries: Census, IBWC, IBC, USGS, 1972 - 2010

U.S. National Grid	100,000-m Square ID	W12C
	1000-m UTM Grid	100000
	Grid Zone Designation	12S

CONTOUR INTERVAL 20 FEET
NORTH AMERICAN VERTICAL DATUM OF 1988
This map was produced to conform with the National Geospatial Program US Topo Product Standard, 2011. A metadata file associated with this product is draft version 0.6.1

Check with local Forest Service unit for current travel conditions and restrictions.

SILVER SPRINGS, AZ
2011

ADJOINING 7.5 QUADRANGLES