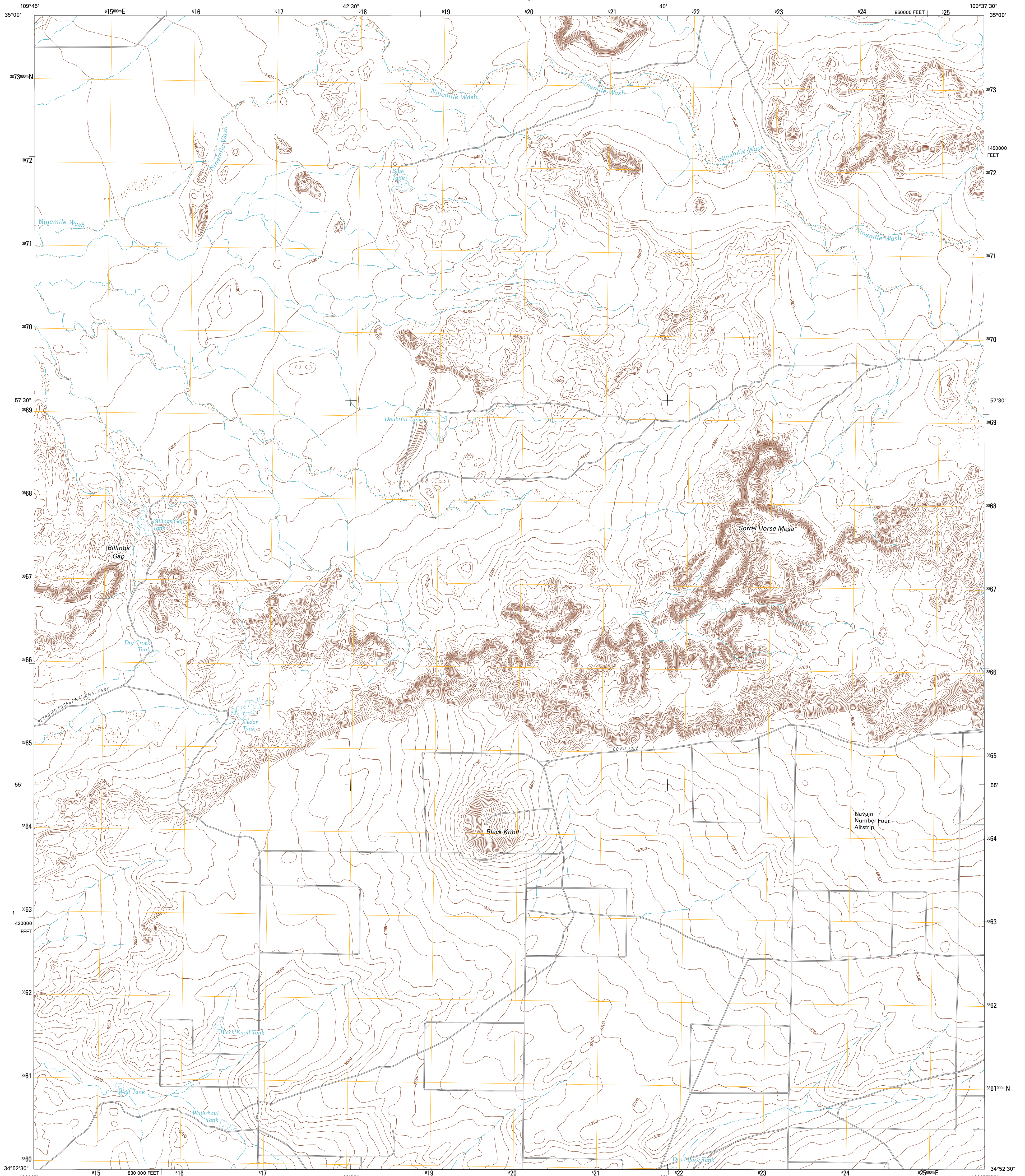




U.S. DEPARTMENT OF THE INTERIOR
U. S. GEOLOGICAL SURVEY

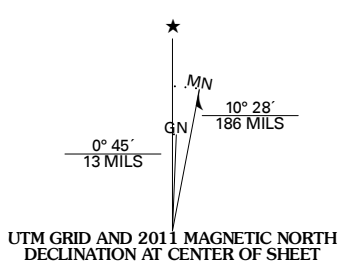


SORREL HORSE MESA QUADRANGLE
ARIZONA-APACHE CO.
7.5-MINUTE SERIES



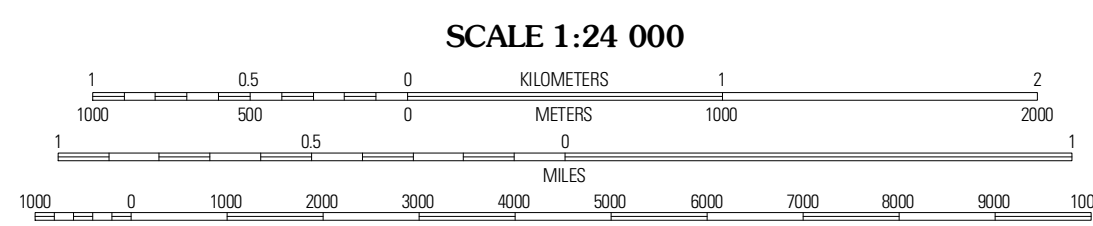
Produced by the United States Geological Survey
North American Datum of 1983 (NAD83)
World Geodetic System of 1984 (WGS84) Projection and
1 000-meter grid: Universal Transverse Mercator, Zone 12S
10 000-foot ticks: Arizona Coordinate System of 1983 (east zone)

Imagery: N/AIP, June 2010
Roads: 2006-2011 TomTom
Names: GNIS, 2011
Hydrography: National Hydrography Dataset, 2007
Contours: National Elevation Dataset, 2000
Boundaries: Census, IBWC, IBC, USGS, 1972 - 2010



UTM GRID AND 2011 MAGNETIC NORTH
DECLINATION AT CENTER OF SHEET

U.S. National Grid
100,000m Square ID
XD
Grid Zone Designation
12S



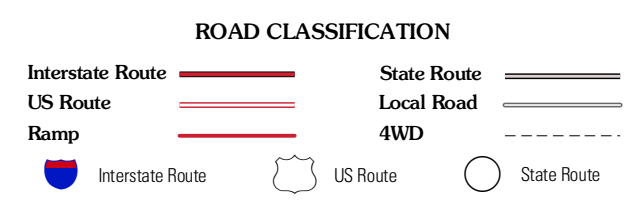
SCALE 1:24 000
CONTOUR INTERVAL 10 FEET
NORTH AMERICAN VERTICAL DATUM OF 1988
This map was produced to conform with the
National Geospatial Program US Topo Product Standard, 2011.
A metadata file associated with this product is draft version 0.6.1



QUADRANGLE LOCATION

Kuchina Point	Pima	Navajo South
Adama	Sorrel Horse Mesa	Ninemile Seep
Agate House	Milky Ranch	Seven Springs

ADJOINING 7.5 QUADRANGLES



ROAD CLASSIFICATION
Interstate Route
US Route
Ramp
State Route
Local Road
4WD

SORREL HORSE MESA, AZ
2011