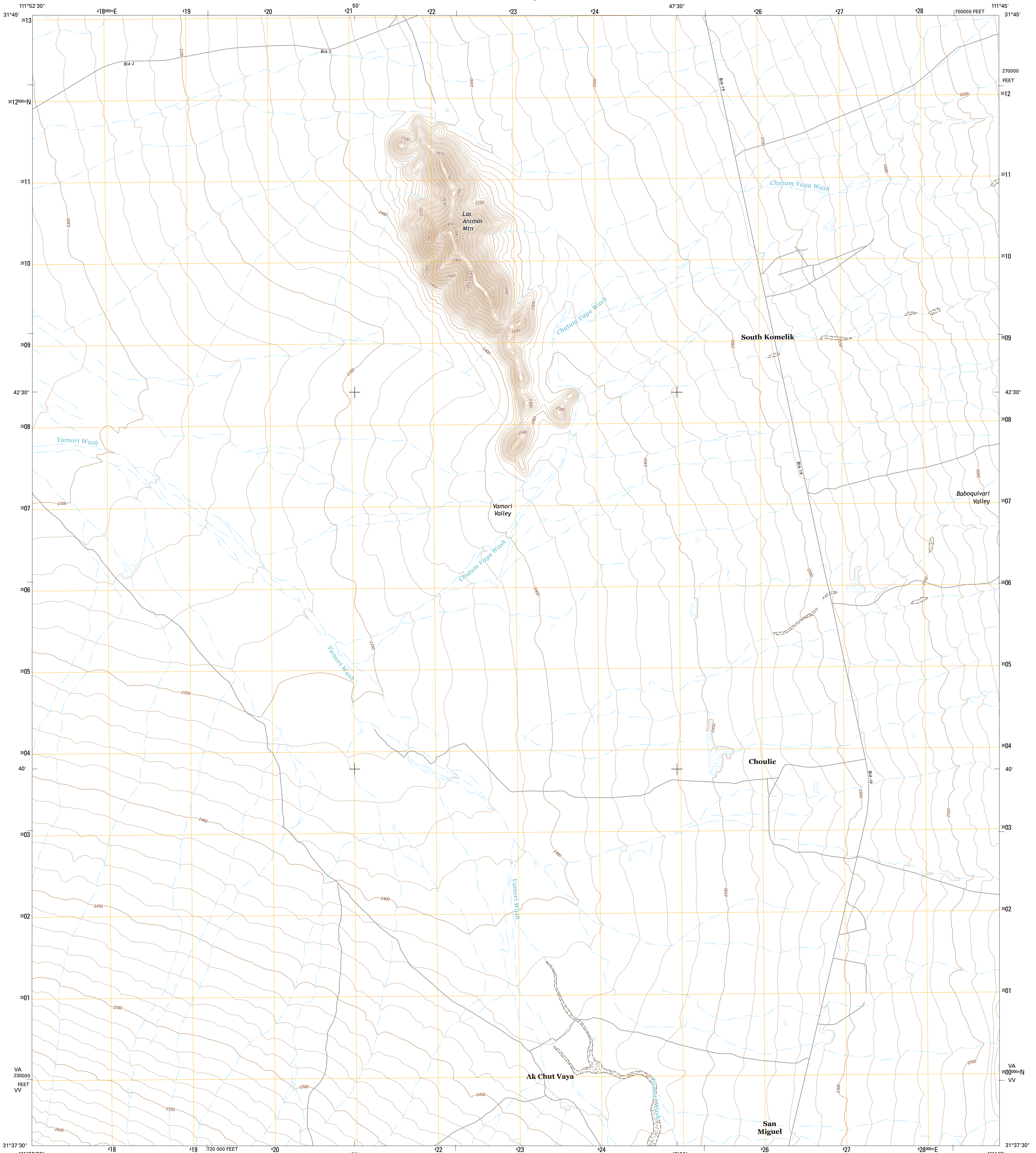




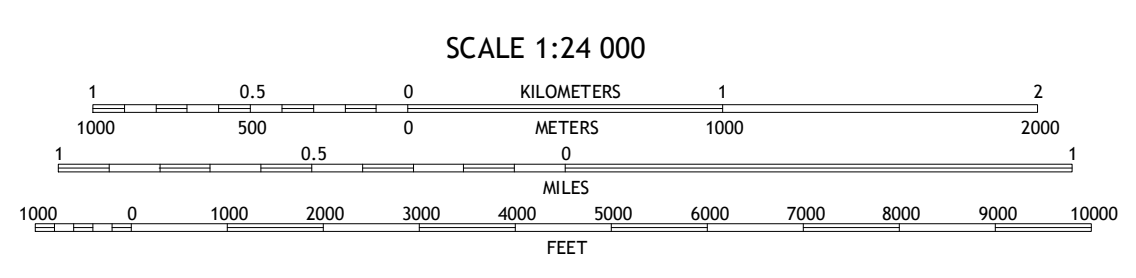
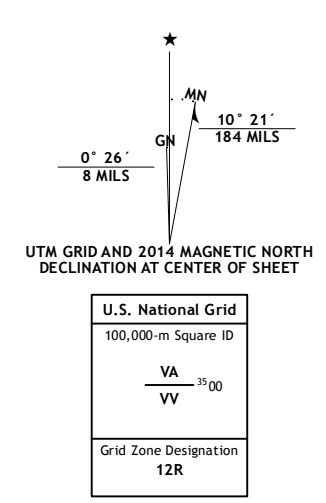
U.S. DEPARTMENT OF THE INTERIOR
U.S. GEOLOGICAL SURVEY



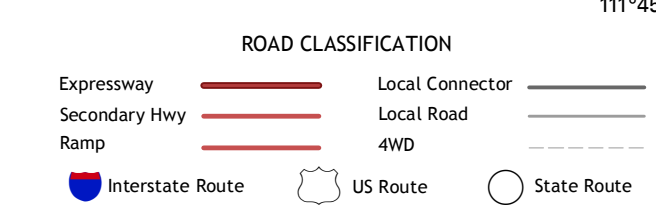
SOUTH KOMELIK QUADRANGLE
ARIZONA-PIMA CO.
7.5-MINUTE SERIES



Produced by the United States Geological Survey
 North American Datum of 1983 (NAD83)
 World Geodetic System of 1984 (WGS84). Projection and
 1 000-meter grid: Universal Transverse Mercator, Zone 12R
 10 000-foot ticks: Arizona Coordinate System of 1983 (central
 zone)
 This map is not a legal document. Boundaries may be
 generalized for this map scale. Private lands within government
 reservations may not be shown. Obtain permission before
 entering private lands.
 Imagery.....NAIP, June 2013
 Roads.....HERE, ©2013
 Names.....GNIS, 2013
 Hydrography.....National Hydrography Dataset, 2013
 Contours.....National Elevation Dataset, 2003
 Boundaries.....Multiple sources; see metadata file 1972 - 2014
 Public Land Survey System.....BLM, 2011



CONTOUR INTERVAL 10 FEET
 NORTH AMERICAN VERTICAL DATUM OF 1988
 This map was produced to conform with the
 National Geospatial Program US Topo Product Standard, 2011.
 A metadata file associated with this product is draft version 0.6.16



1	2	3	1 Cowlic
2	3	4	2 Topawa
3	4	5	3 Chult Stalk
4	5	6	4 Vamori
5	6	7	5 Aguirre Peak
6	7	8	6 San Agustín
7	8		7 San Miguel
8			8 Caponera Peak

ADJOINING QUADRANGLES

SOUTH KOMELIK, AZ
2014

