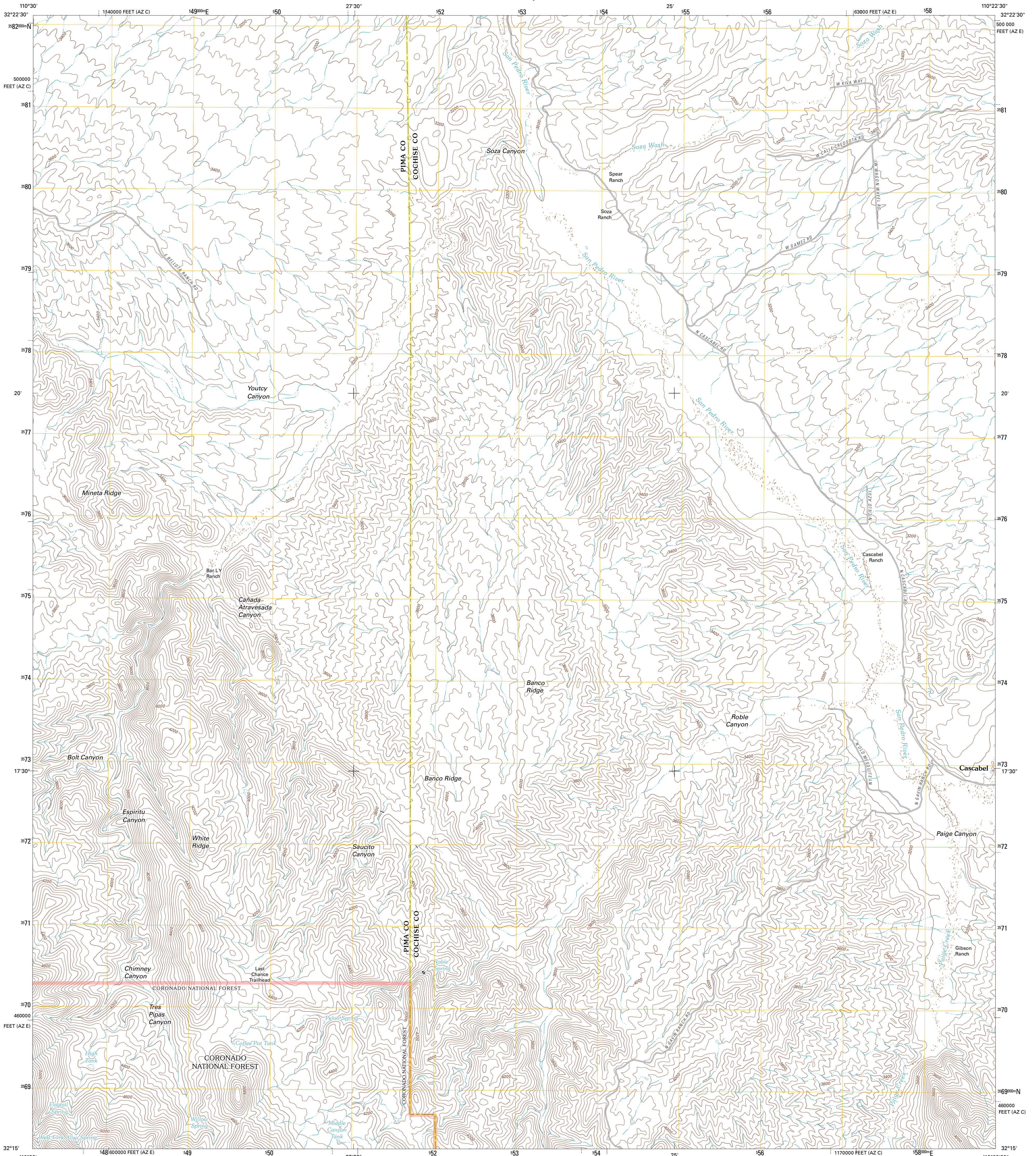




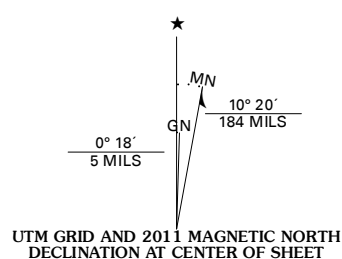
U.S. DEPARTMENT OF THE INTERIOR  
U. S. GEOLOGICAL SURVEY



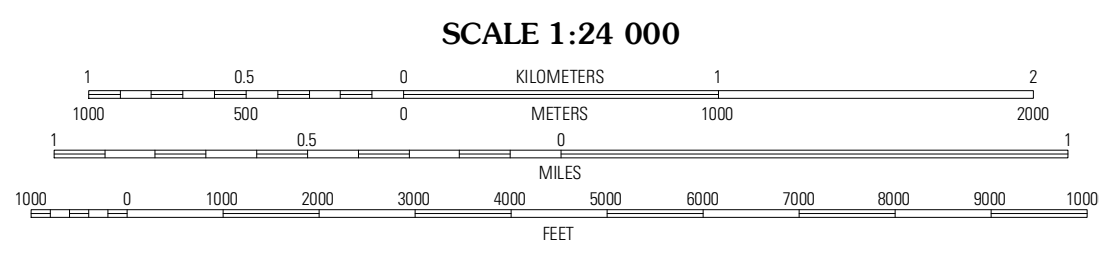
SOZA CANYON QUADRANGLE  
ARIZONA  
7.5-MINUTE SERIES



Produced by the United States Geological Survey  
North American Datum of 1983 (NAD83)  
World Geodetic System of 1984 (WGS84) Projection and  
1 000-meter grid; Universal Transverse Mercator, Zone 12S  
10 000-foot ticks; Arizona Coordinate System of 1983 (east  
and central zones)



U.S. National Grid	100,000-m Square ID
WA	
Grid Zone Designation	12S



CONTOUR INTERVAL 40 FEET  
NORTH AMERICAN VERTICAL DATUM OF 1988  
This map was produced to conform with the  
National Geospatial Program US Topo Product Standard, 2011.  
A metadata file associated with this product is draft version 0.6.1



QUADRANGLE LOCATION

Bushman Canyon	Redogon	Cherry Spring Peak
Plety Hill	Soza Canyon	Soza Mesa
Mica Mountain	Happy Valley	Wildhorse Mountain

**ROAD CLASSIFICATION**

	Interstate Route		State Route
	US Route		Local Road
	Interstate Ramp		4WD
	FS Primary Route		FS Passenger Route
			FS High Clearance Route

Check with local Forest Service unit for current travel conditions and restrictions.

SOZA CANYON, AZ  
2011

ADJOINING 7.5 QUADRANGLES