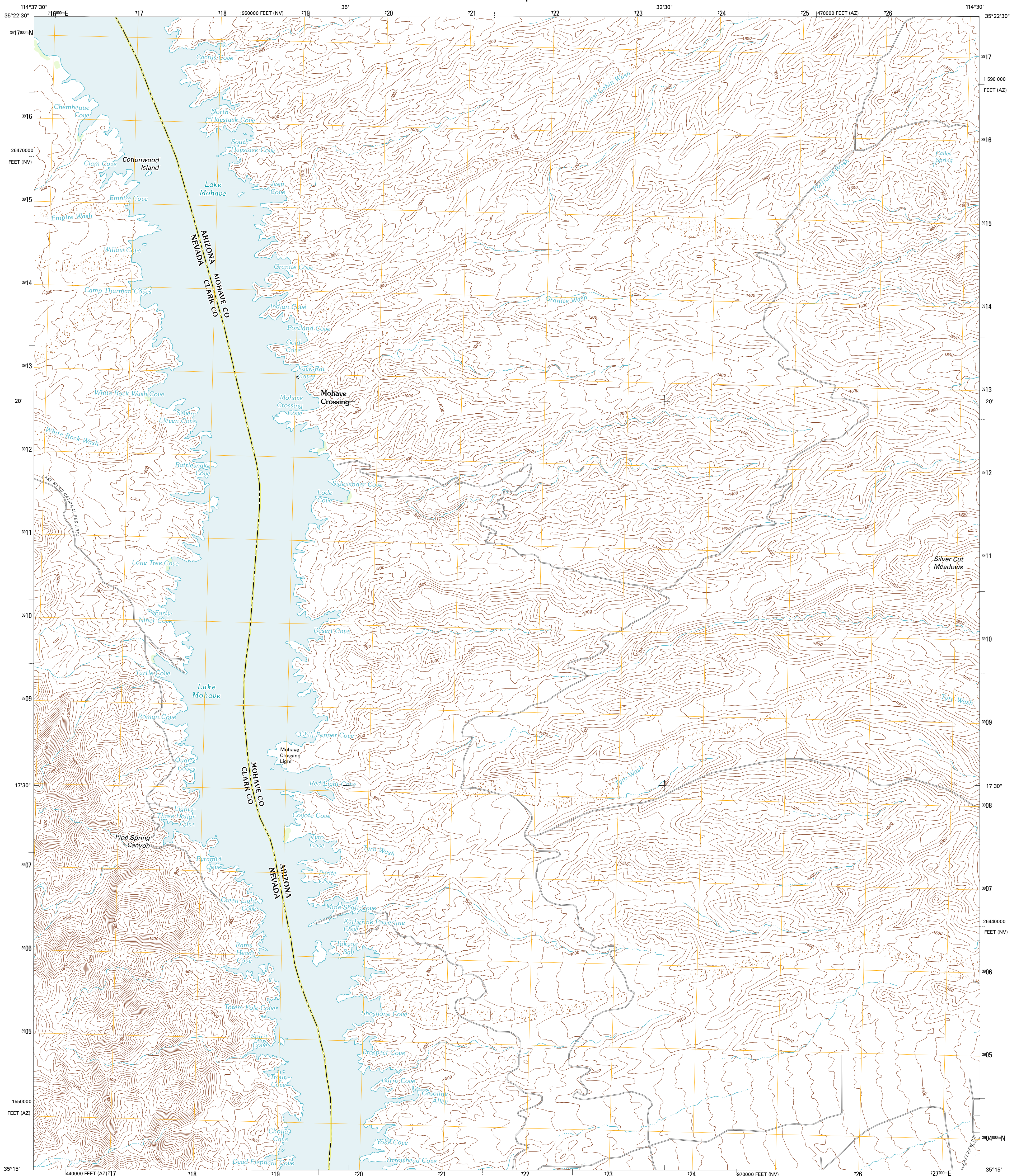




U.S. DEPARTMENT OF THE INTERIOR
U. S. GEOLOGICAL SURVEY

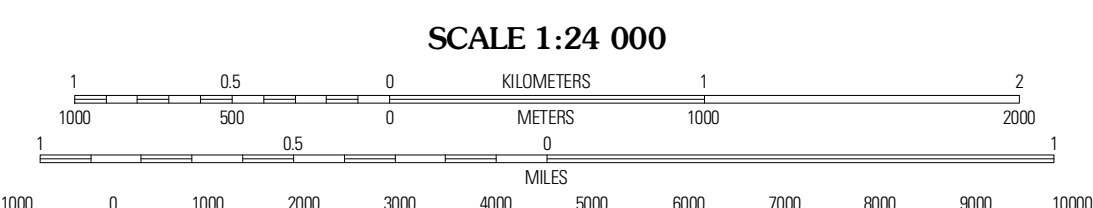
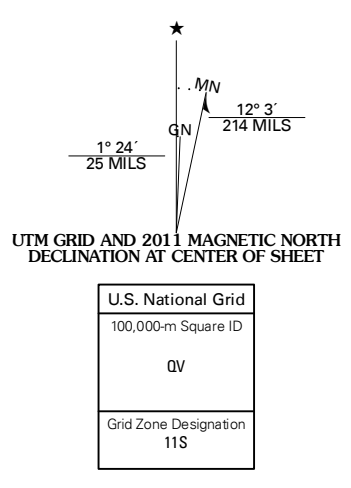


SPRIT MOUNTAIN SE QUADRANGLE
ARIZONA-NEVADA
7.5-MINUTE SERIES



Produced by the United States Geological Survey
North American Datum of 1983 (NAD83)
World Geodetic System of 1984 (WGS84) Projection and
1 000-meter grid; Universal Transverse Mercator, Zone 11S
10 000-foot ticks; Arizona Coordinate System of 1983 (west
zone), Nevada Coordinate System of 1983 (east zone)

Imagery.....NAP, July 2010
Roads.....©2006-2011 TomTom
Names.....GNIS, 2011
Hydrography.....National Hydrography Dataset, 2007
Contours.....National Elevation Dataset, 2002
Boundaries.....Census, IBWC, IBC, USGS, 1972-2010

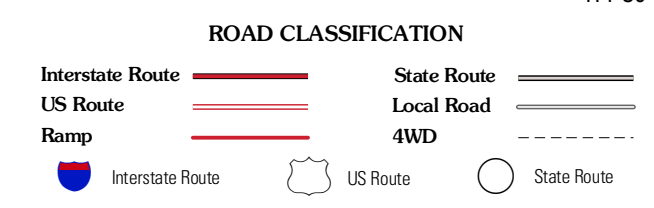


CONTOUR INTERVAL 40 FEET
NORTH AMERICAN VERTICAL DATUM OF 1988
This map was produced to conform with the
National Geospatial Program US Topo Product Standard, 2011.
A metadata file associated with this product is draft version 0.6.1



QUADRANGLE LOCATION

Spirit Mountain NW	Spirit Mountain NE	Grasshopper Junction NW
Spirit Mountain SW	Spirit Mountain SE	Burns Spring
Bridge Canyon	Davis Dam	Union Pass



SPRIT MOUNTAIN SE, AZ-NV
2011

ADJOINING 7.5 QUADRANGLES