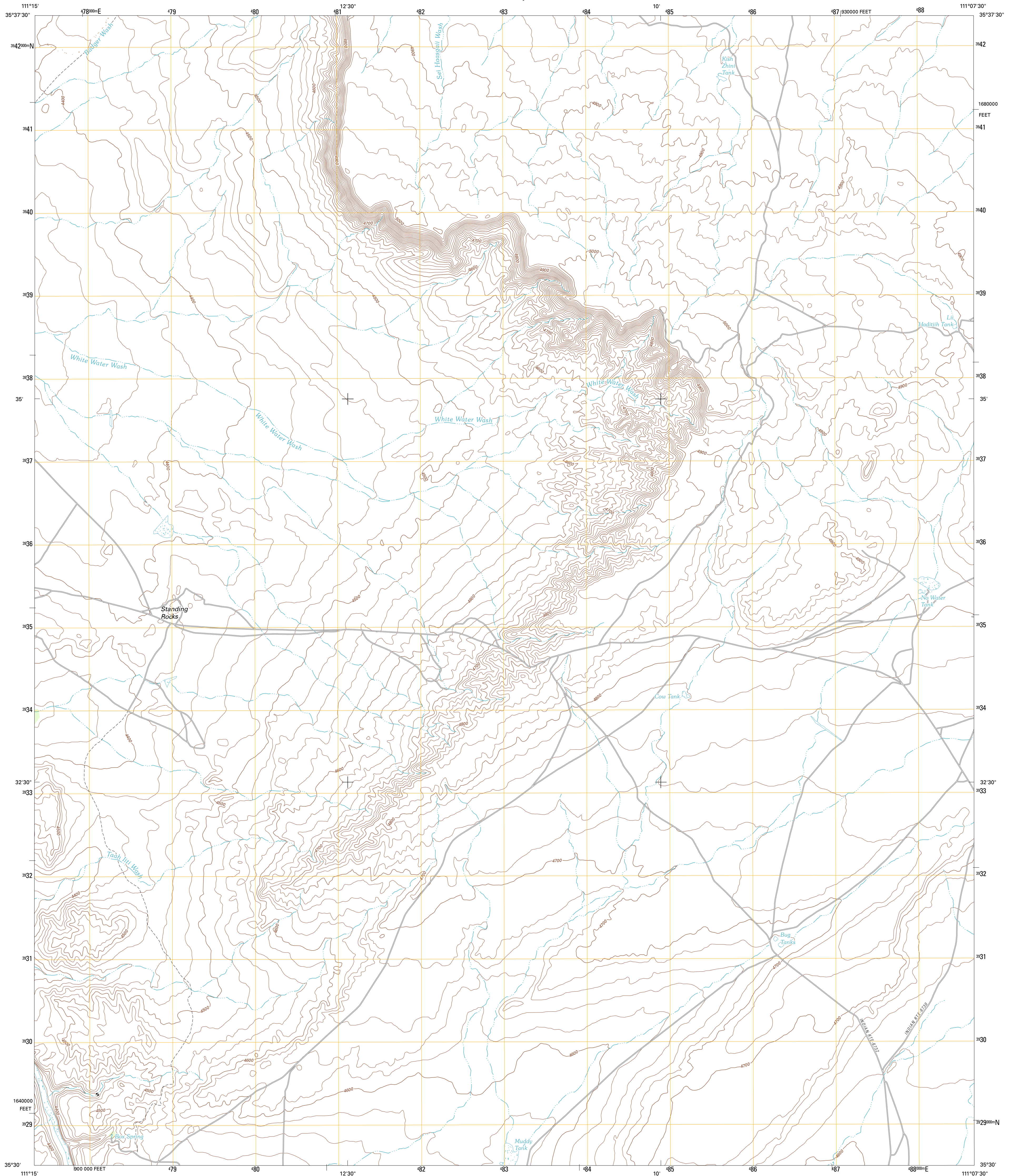




U.S. DEPARTMENT OF THE INTERIOR
U. S. GEOLOGICAL SURVEY

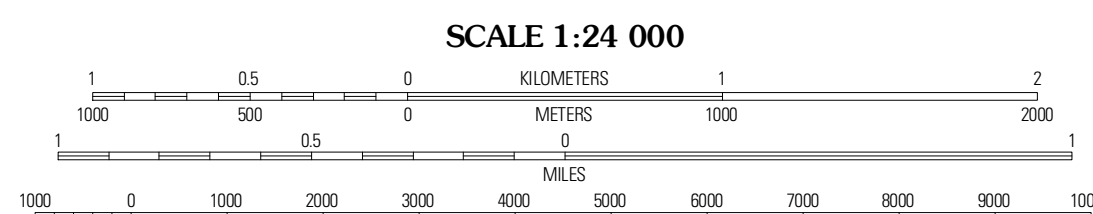
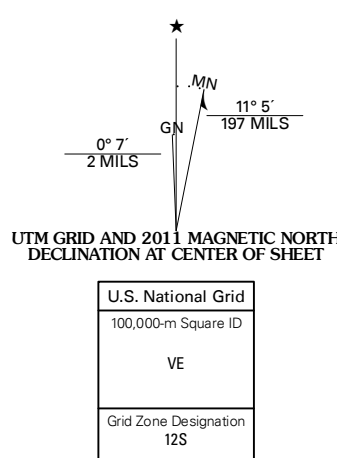


STANDING ROCKS QUADRANGLE
ARIZONA-COCONINO CO.
7.5-MINUTE SERIES



Produced by the United States Geological Survey
North American Datum of 1983 (NAD83)
World Geodetic System of 1984 (WGS84). Projection and
1 000-meter grid: Universal Transverse Mercator, Zone 12S
10 000-foot ticks: Arizona Coordinate System of 1983
(central zone)

Imagery: NADP, June 2010
Roads: ©2006-2011 TomTom
Names: GNSI, 2011
Hydrography: National Hydrography Dataset, 2007
Contours: National Elevation Dataset, 2001
Boundaries: Census, IBWC, IBC, USGS, 1972 - 2010

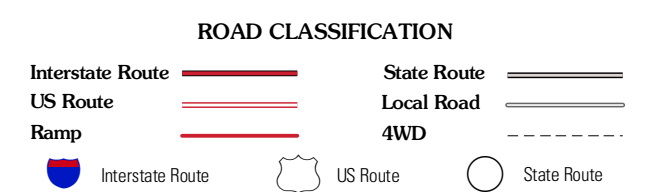


SCALE 1:24 000
CONTOUR INTERVAL 20 FEET
NORTH AMERICAN VERTICAL DATUM OF 1988
This map was produced to conform with the
National Geospatial Program US Topo Product Standard, 2011.
A metadata file associated with this product is draft version 0.6.1



QUADRANGLE LOCATION

Wipaki NE	Budger Spring	Rock Head
Wipaki SE	Standing Rocks	White Water Tank
Roden Crater	Grand Falls	Grand Falls NE



STANDING ROCKS, AZ
2011

ADJOINING 7.5' QUADRANGLES