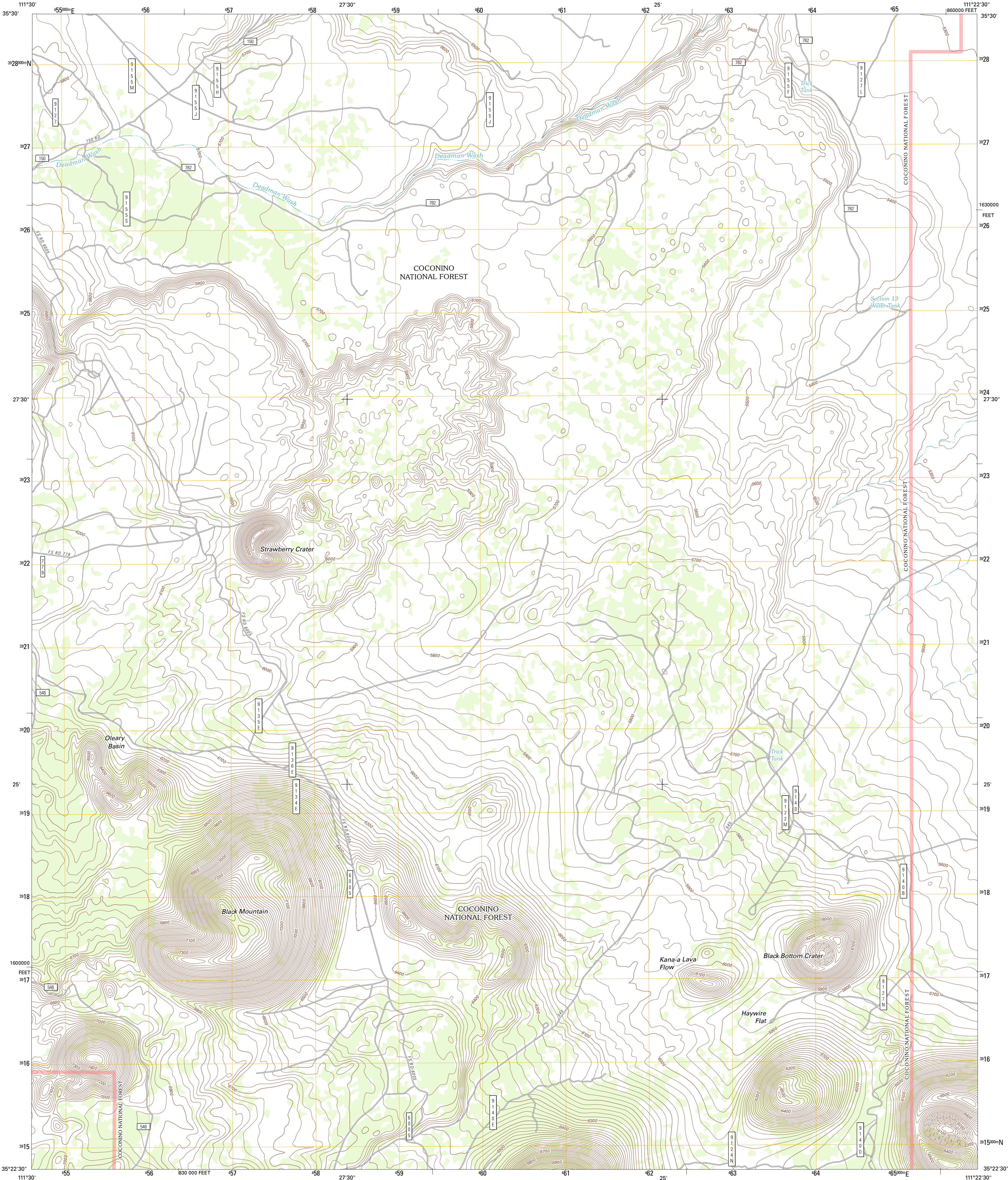




U.S. DEPARTMENT OF THE INTERIOR
U. S. GEOLOGICAL SURVEY



STRAWBERRY CRATER QUADRANGLE
ARIZONA-COCONINO CO.
7.5-MINUTE SERIES

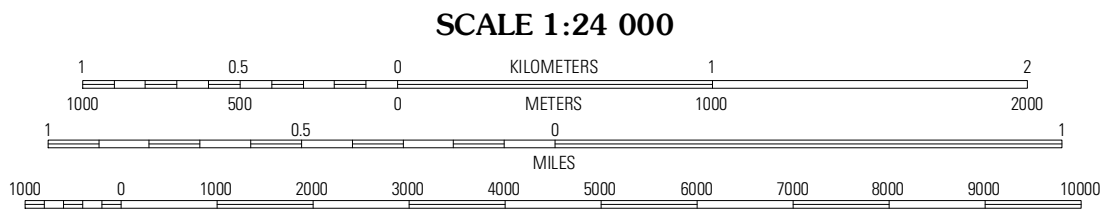


Produced by the United States Geological Survey
North American Datum of 1983 (NAD83)
World Geodetic System of 1984 (WGS84). Projection and
10 000-foot ticks: Arizona Coordinate System of 1983
(central zone)

Imagery.....N.A.P., June 2010
Roads.....©2006-2011 TomTom
Roads within US Forest Service Lands.....FS Topo data
with limited Forest Service updates, 2009
Names.....©2006-2011 TomTom
Hydrography.....National Hydrography Dataset, 2010
Contours.....National Elevation Dataset, 2000
Boundaries.....Census, IBWC, IBC, USGS, 1972 - 2010

UTM GRID AND 2011 MAGNETIC NORTH
DECLINATION AT CENTER OF SHEET

U.S. National Grid
100 000-m Square ID
VE
Grid Zone Designation
12S



CONTOUR INTERVAL 20 FEET
NORTH AMERICAN VERTICAL DATUM OF 1988

This map was produced to conform with the
National Geospatial Program US Topo Product Standard, 2011.
A metadata file associated with this product is draft version 0.6.1



East of S P Mountain	Wupatki SW	Wupatki SE
O'Leary Peak	Strawberry Crater	Roden Crater
Sunset Crater West	Sunset Crater East	Merriam Crater

ADJOINING 7.5' QUADRANGLES

ROAD CLASSIFICATION

Interstate Route	State Route
US Route	Local Road
Ramp	4WD
FS Primary Route	US Route
FS Passenger Route	State Route
FS High Clearance Route	

Check with local Forest Service unit
for current travel conditions and restrictions.

STRAWBERRY CRATER, AZ
2011