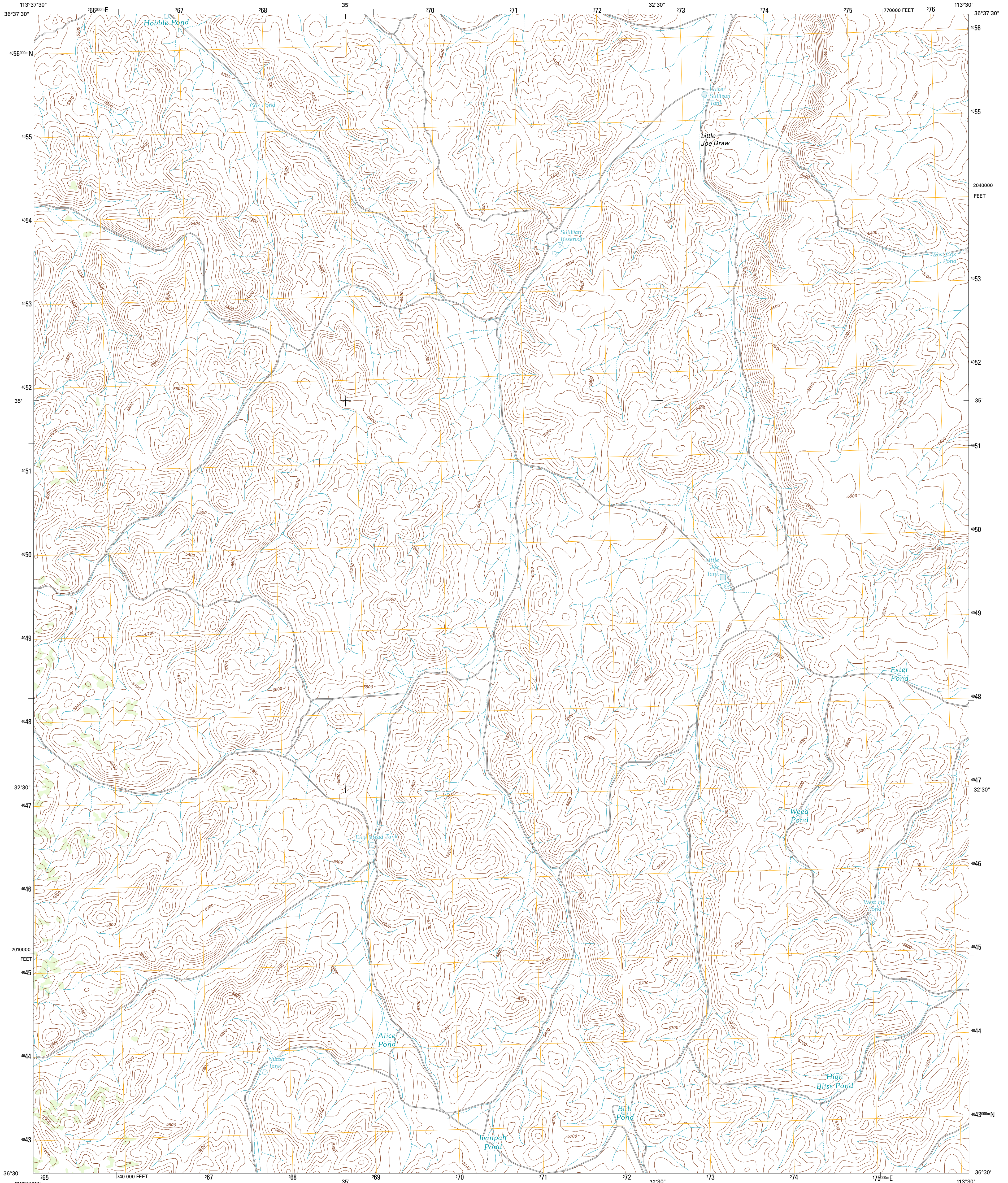




U.S. DEPARTMENT OF THE INTERIOR
U. S. GEOLOGICAL SURVEY

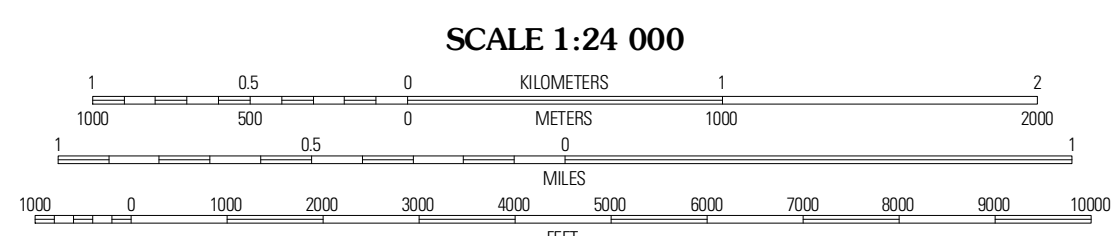
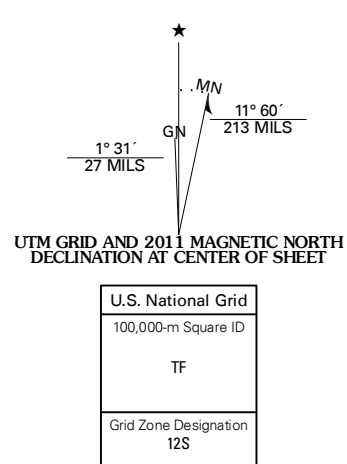


SULLIVAN DRAW SOUTH QUADRANGLE
ARIZONA-MOHAVE CO.
7.5-MINUTE SERIES



Produced by the United States Geological Survey
North American Datum of 1983 (NAD83)
World Geodetic System of 1984 (WGS84). Projection and
1 000-meter grid. Universal Transverse Mercator, Zone 12S
(10 000-foot ticks: Arizona Coordinate System of 1983 (west zone))

Imagery: N.A.P., June 2010
Roads: 2006-2011 TomTom
Names: GNS, 2011
Hydrography: National Hydrography Dataset, 2007
Contours: National Elevation Dataset, 2000
Boundaries: Census, IBWC, IBC, USGS, 1972 - 2010

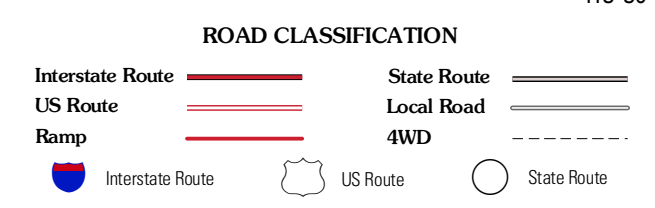


CONTOUR INTERVAL 20 FEET
NORTH AMERICAN VERTICAL DATUM OF 1988

This map was produced to conform with the National Geospatial Program US Topo Product Standard, 2011. A metadata file associated with this product is draft version 0.6.1



Mustang Knoll	Sullivan Draw North	Dutchman Draw
Saint George Canyon	Sullivan Draw South	Little Tanks
Last Chance Canyon	Poverty Spring	Poverty Knoll



SULLIVAN DRAW SOUTH, AZ
2011

ADJOINING 7.5' QUADRANGLES