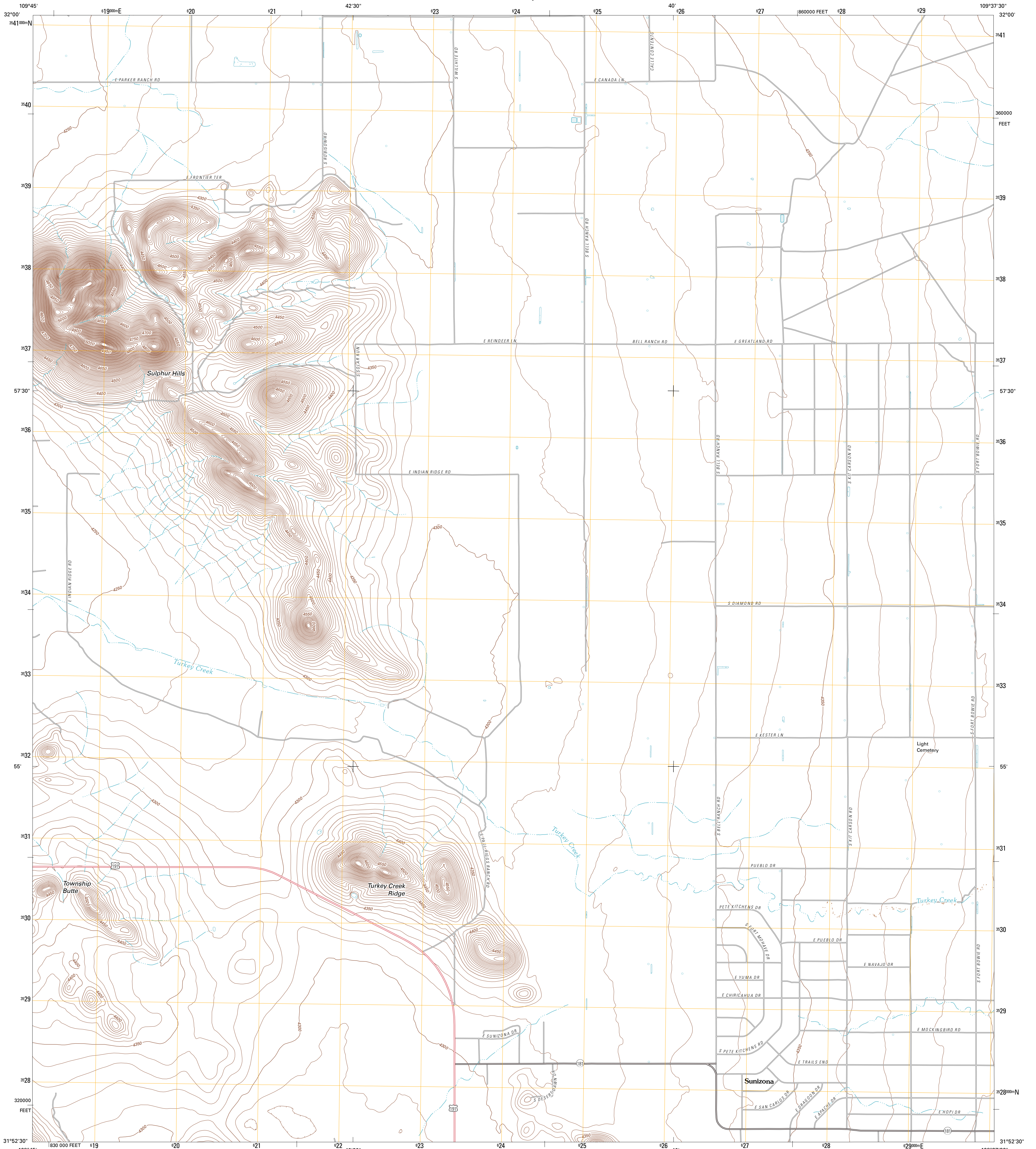




U.S. DEPARTMENT OF THE INTERIOR  
U. S. GEOLOGICAL SURVEY

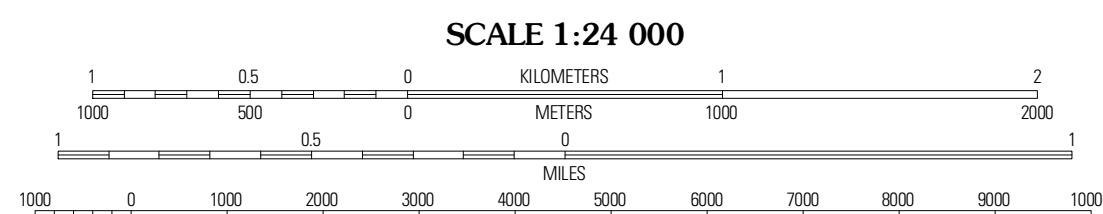
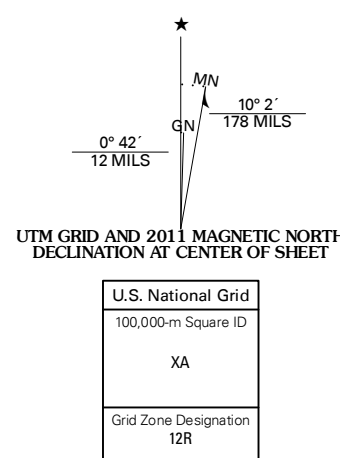


SULPHUR HILLS QUADRANGLE  
ARIZONA-COCHISE CO.  
7.5-MINUTE SERIES



Produced by the United States Geological Survey  
North American Datum of 1983 (NAD83)  
World Geodetic System of 1984 (WGS84) Projection and  
1 000-meter grid; Universal Transverse Mercator, Zone 12R  
10 000-foot ticks; Arizona Coordinate System of 1983 (east zone)

Imagery:.....NIP, June 2010  
©2006-2011  
Roads:.....GNIS, 2011  
Hydrography:.....National Hydrography Dataset, 2007  
Contours:.....National Elevation Dataset, 2002  
Boundaries:.....Census, IBWC, IBC, USGS, 1972 - 2010



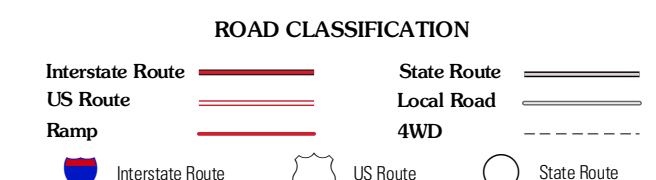
CONTOUR INTERVAL 10 FEET  
NORTH AMERICAN VERTICAL DATUM OF 1988

This map was produced to conform with the National Geospatial Program US Topo Product Standard, 2011. A metadata file associated with this product is draft version 0.6.1



QUADRANGLE LOCATION

Sulphur Spring	Don Cabezas SW	Pat Hills North
Pearce	Sulphur Hills	Pat Hills South
Turquoise Mountain	Squaretop Hills West	Squaretop Hills East



SULPHUR HILLS, AZ  
2011

ADJOINING 7.5 QUADRANGLES