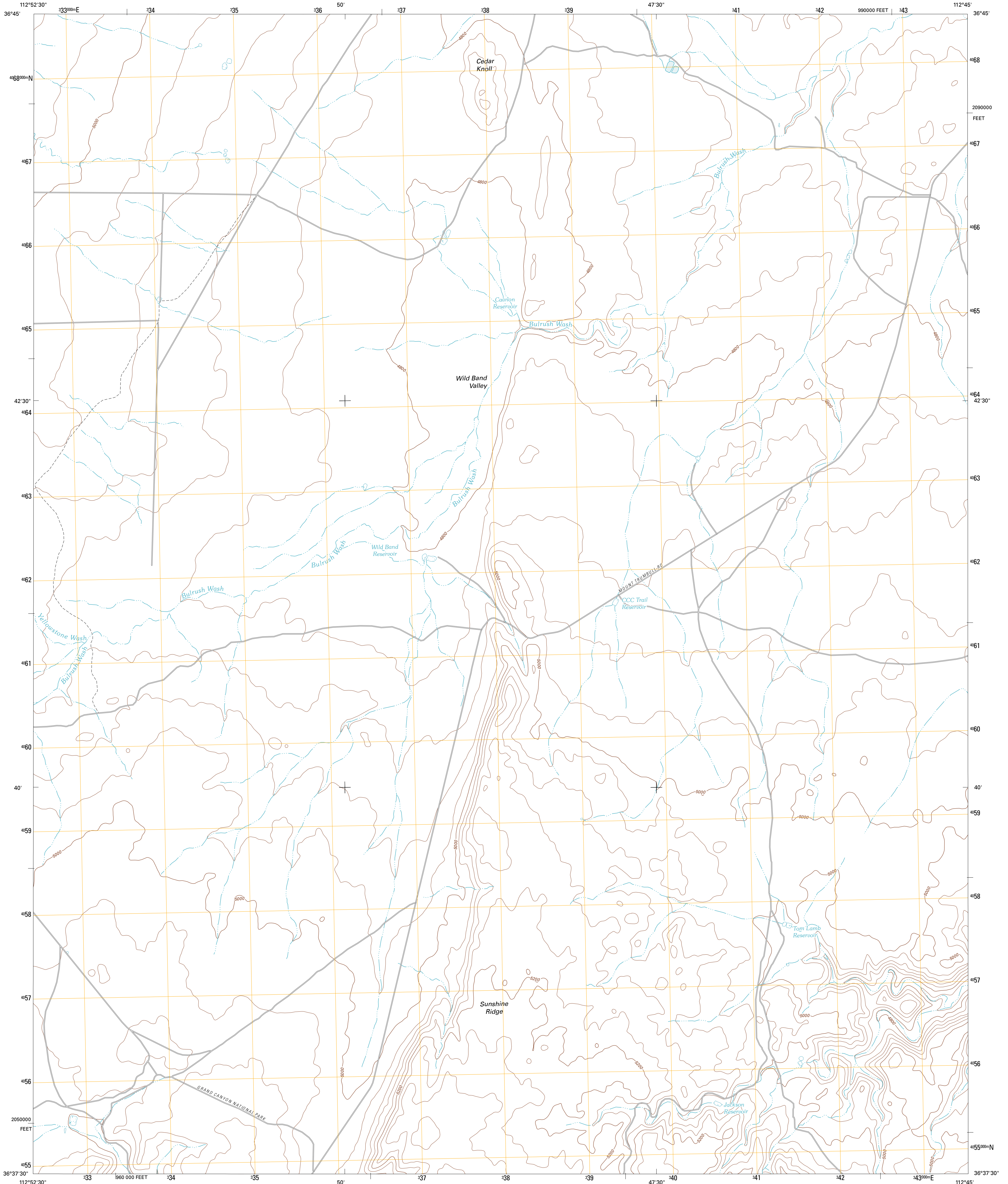




U.S. DEPARTMENT OF THE INTERIOR
U. S. GEOLOGICAL SURVEY

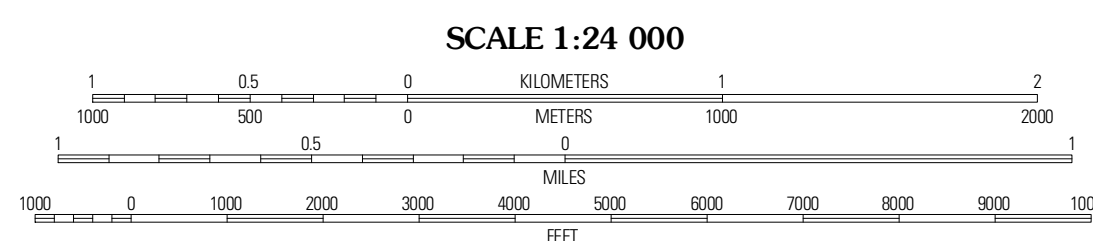
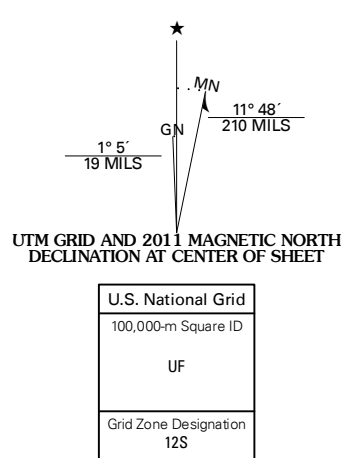


SUNSHINE RIDGE QUADRANGLE
ARIZONA-MOHAVE CO.
7.5-MINUTE SERIES



Produced by the United States Geological Survey
North American Datum of 1983 (NAD83)
©2006-2011 TomTom
World Geodetic System of 1984 (WGS84). Projection and
1 000-meter grid: Universal Transverse Mercator, Zone 12S
10 000-foot ticks: Arizona Coordinate System of 1983 (west
zone)

Imagery.....NAIP, June 2010
Roads.....©2006-2011 TomTom
Names.....GNIS, 2011
Hydrography.....National Hydrography Dataset, 2007
Contours.....National Elevation Dataset, 2000
Boundaries.....Census, IBWC, IBC, USGS, 1972 - 2010



CONTOUR INTERVAL 40 FEET
NORTH AMERICAN VERTICAL DATUM OF 1988
This map was produced to conform with the
National Geospatial Program US Topo Product Standard, 2011.
A metadata file associated with this product is draft version 0.6.1



QUADRANGLE LOCATION

Maroney Well	Pipe Valley	Pipe Spring
Wild Band Pockets	Sunshine Ridge	Findlay Tank
Heaton Knolls	Robinson Canyon	Grana Spring

ROAD CLASSIFICATION

Interstate Route	State Route
US Route	Local Road
Ramp	4WD

SUNSHINE RIDGE, AZ
2011

ADJOINING 7.5' QUADRANGLES