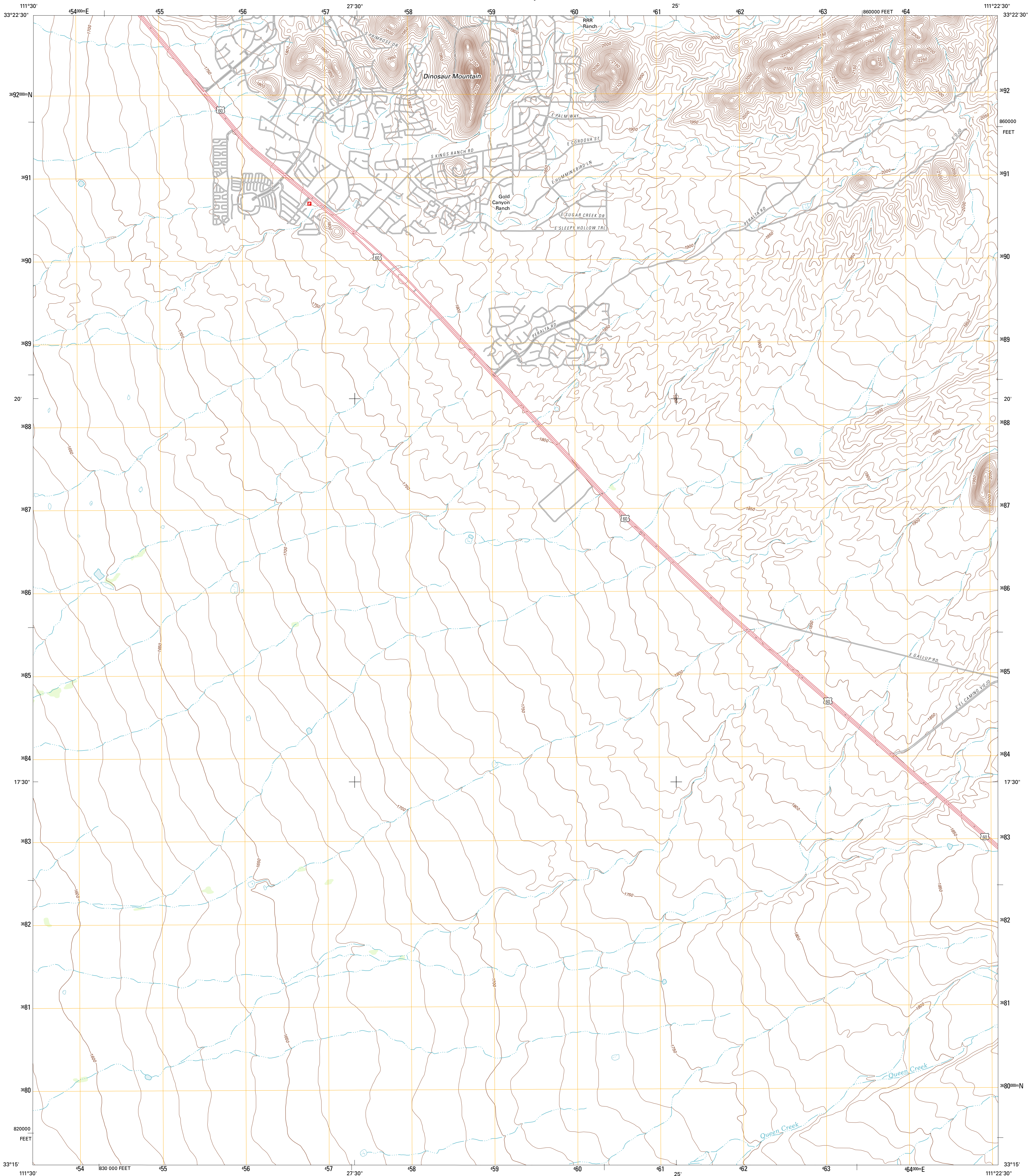




U.S. DEPARTMENT OF THE INTERIOR
U. S. GEOLOGICAL SURVEY

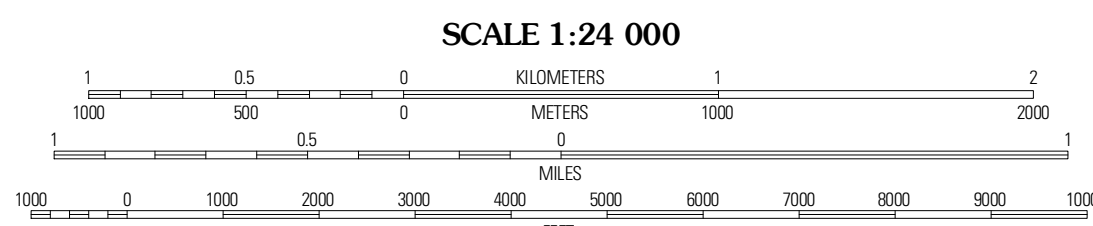
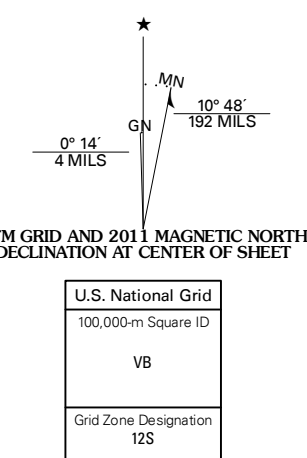


SUPERSTITION MOUNTAINS SW QUADRANGLE
ARIZONA-PINAL CO.
7.5-MINUTE SERIES



Produced by the United States Geological Survey
North American Datum of 1983 (NAD83)
World Geodetic System of 1984 (WGS84), Projection and
1 000-meter grid: Universal Transverse Mercator, Zone 12S
10 000-foot ticks: Arizona Coordinate System of 1983
(central zone)

Imagery.....NIP, August 2010
Roads.....©2006-2011 TomTom
Names.....GNIS, 2011
Hydrography.....National Hydrography Dataset, 2007
Contours.....National Elevation Dataset, 2003
Boundaries.....Census, IBWC, IBC, USGS, 1972 - 2010



CONTOUR INTERVAL 10 FEET
NORTH AMERICAN VERTICAL DATUM OF 1988
This map was produced to conform with the
National Geospatial Program US Topo Product Standard, 2011.
A metadata file associated with this product is draft version 0.6.1



QUADRANGLE LOCATION		
Apache Junction	Goldfield	Weavers Needle
Desert Well	Superstition Mountains SW	Florence Junction
Sacaton NE	Magma	Florence NE

ROAD CLASSIFICATION			
Interstate Route	State Route	US Route	Local Road
Ramp	4WD		

SUPERSTITION MOUNTAINS SW, AZ
2011

ADJOINING 7.5' QUADRANGLES