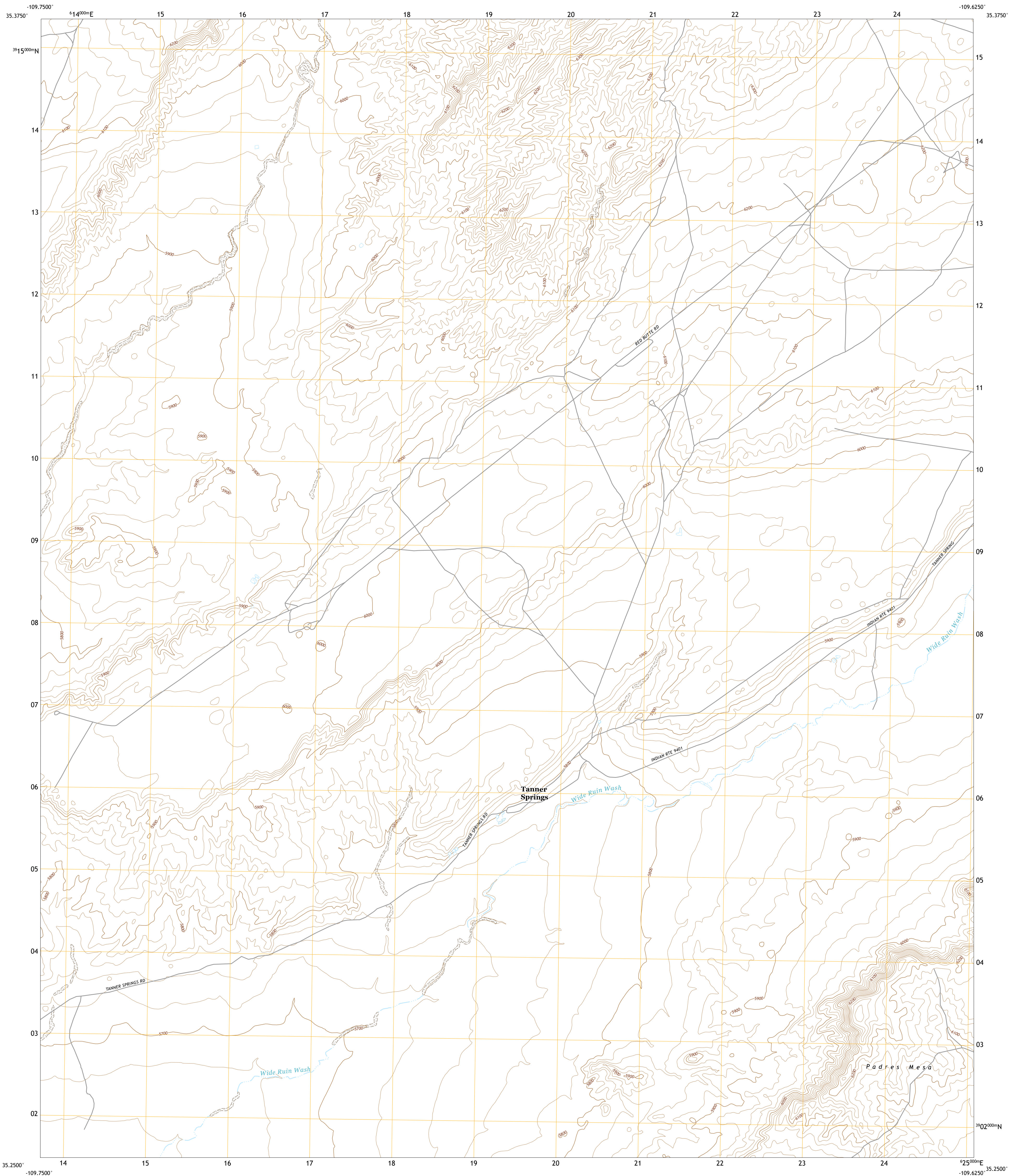




U.S. DEPARTMENT OF THE INTERIOR
U.S. GEOLOGICAL SURVEY



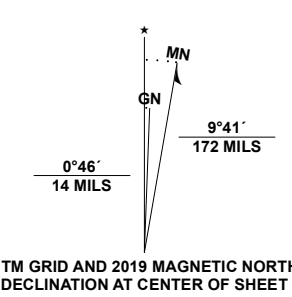
TANNER SPRINGS QUADRANGLE
ARIZONA - APACHE COUNTY
7.5-MINUTE SERIES



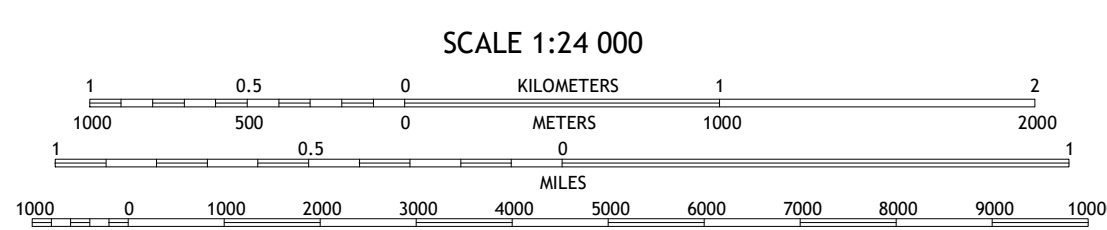
Produced by the United States Geological Survey

North American Datum of 1983 (NAD83)
World Geodetic System of 1984 (WGS84), Projection and
1 000-meter grid/Universal Transverse Mercator, Zone 12S
This map is not a legal document. Boundaries may be
generalized for this map scale. Private lands within government
reservations may not be shown. Obtain permission before
entering private lands.

Imagery.....NAIP, July 2019 - July 2019
Roads.....U.S. Census Bureau, 2018
Names.....GNIS, 1980 - 2017
Hydrography.....National Hydrography Dataset, 2005 - 2019
Contours.....National Elevation Dataset, 1999
Boundaries.....Multiple sources; see metadata file 2019 - 2021
Public Land Survey System.....BLM, 2017
Wetlands.....FWS National Wetlands Inventory 2005 - 2009



U.S. National Grid 100,000 - m Square ID XE
Grid Zone Designation 12S



CONTOUR INTERVAL 20 FEET
NORTH AMERICAN VERTICAL DATUM OF 1988

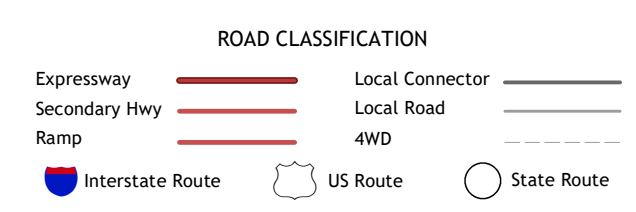
This map was produced to conform with the National Geospatial Program US Topo Product Standard.



1	2	3
4	5	6
7	8	

ADJOINING QUADRANGLES

- 1 Arrowhead Butte NE
- 2 Boggy Lake Well
- 3 Klageh South
- 4 Betty Well
- 5 Dipping Water Well
- 6 Chinde Mesa
- 7 North Mill Well
- 8 Navajo North



TANNER SPRINGS, AZ
2021

