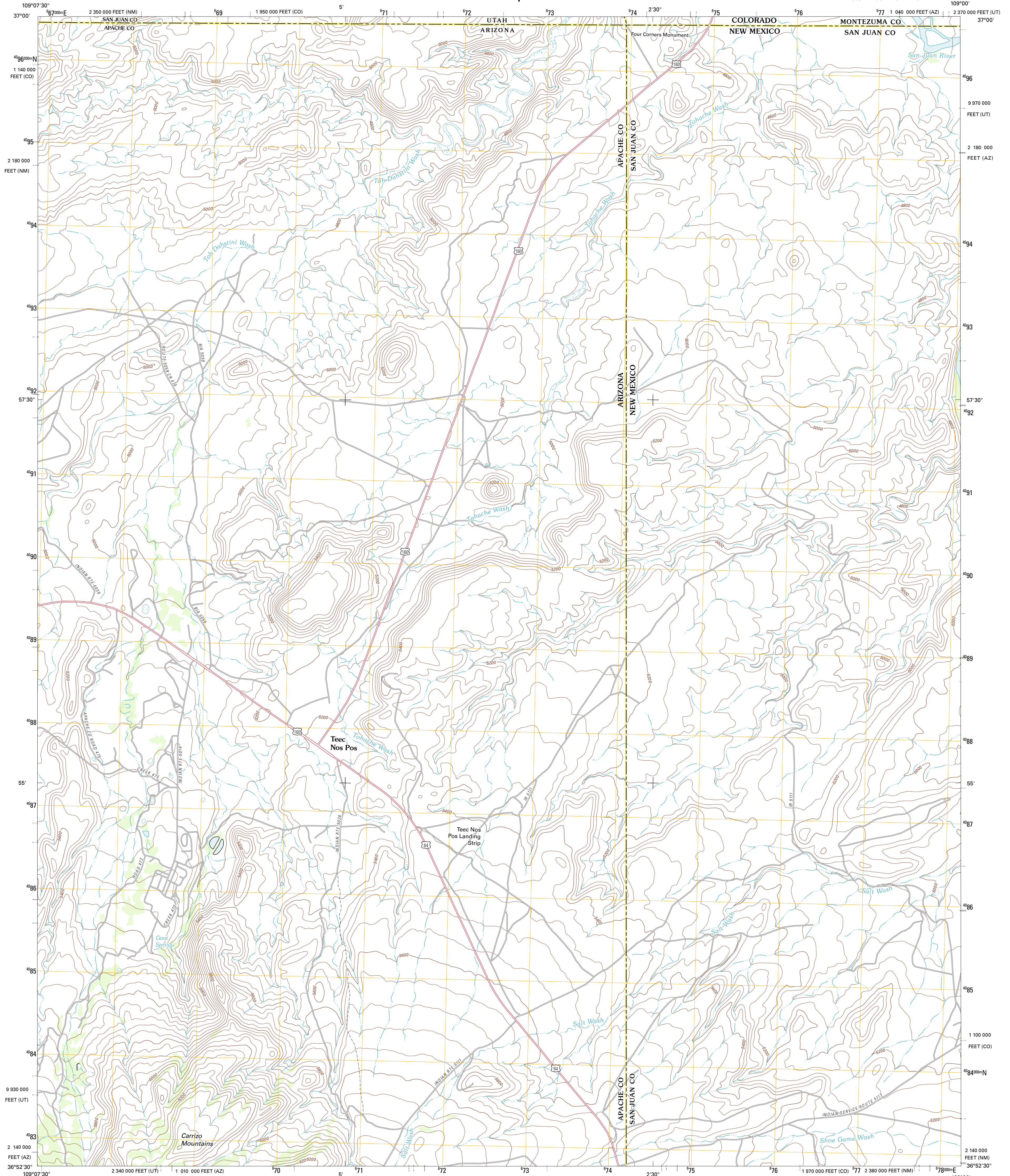




U.S. DEPARTMENT OF THE INTERIOR
U. S. GEOLOGICAL SURVEY

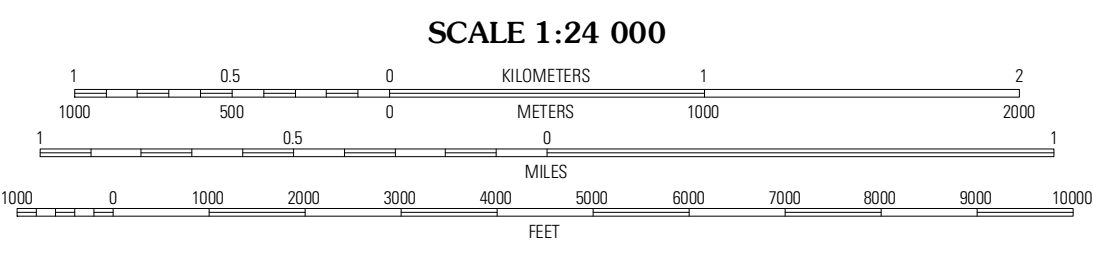
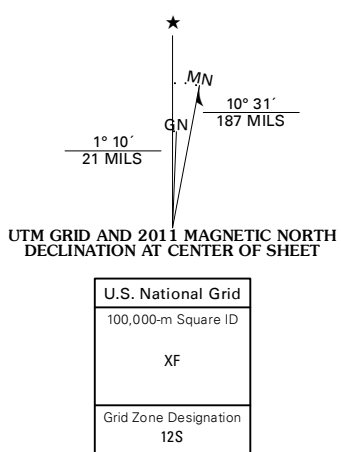


TEEC NOS POS QUADRANGLE
ARIZONA-NEW MEXICO-UTAH-COLORADO
7.5-MINUTE SERIES



Produced by the United States Geological Survey
North American Datum of 1983 (NAD83)
World Geodetic System of 1984 (WGS84) Projection and
1 000-meter grid; Universal Transverse Mercator, Zone 12S
10 000-foot ticks; Arizona Coordinate System of 1983 (east zone),
New Mexico Coordinate System of 1983 (best zone),
Utah Coordinate System of 1983 (south zone), Colorado
Coordinate System of 1983 (south zone)

Imagery: NADP, June 2010
Roads: ©2006-2011 TomTom
Names: GNIS, 2011
Hydrography: National Hydrography Dataset, 2010
Contours: National Elevation Dataset, 1999
Boundaries: Census, IBWC, USGS, 1972 - 2010



CONTOUR INTERVAL 40 FEET
NORTH AMERICAN VERTICAL DATUM OF 1988

This map was produced to conform with the
National Geospatial Program US Topo Product Standard, 2011.
A metadata file associated with this product is draft version 0.6.1



ROAD CLASSIFICATION

Interstate Route	State Route
US Route	Local Road
Ramp	4WD
Interstate Route	US Route
	State Route

QUADRANGLE LOCATION

Yellow Rock Point West	Yellow Rock Point East	Sentinel Peak SW
Cow Butte	Teec Nos Pos	Sallies Spring
Pistons Peak	Beclabito	Rocky Point

ADJOINING 7.5' QUADRANGLES

TEEC NOS POS, AZ-NM-UT-CO
2011