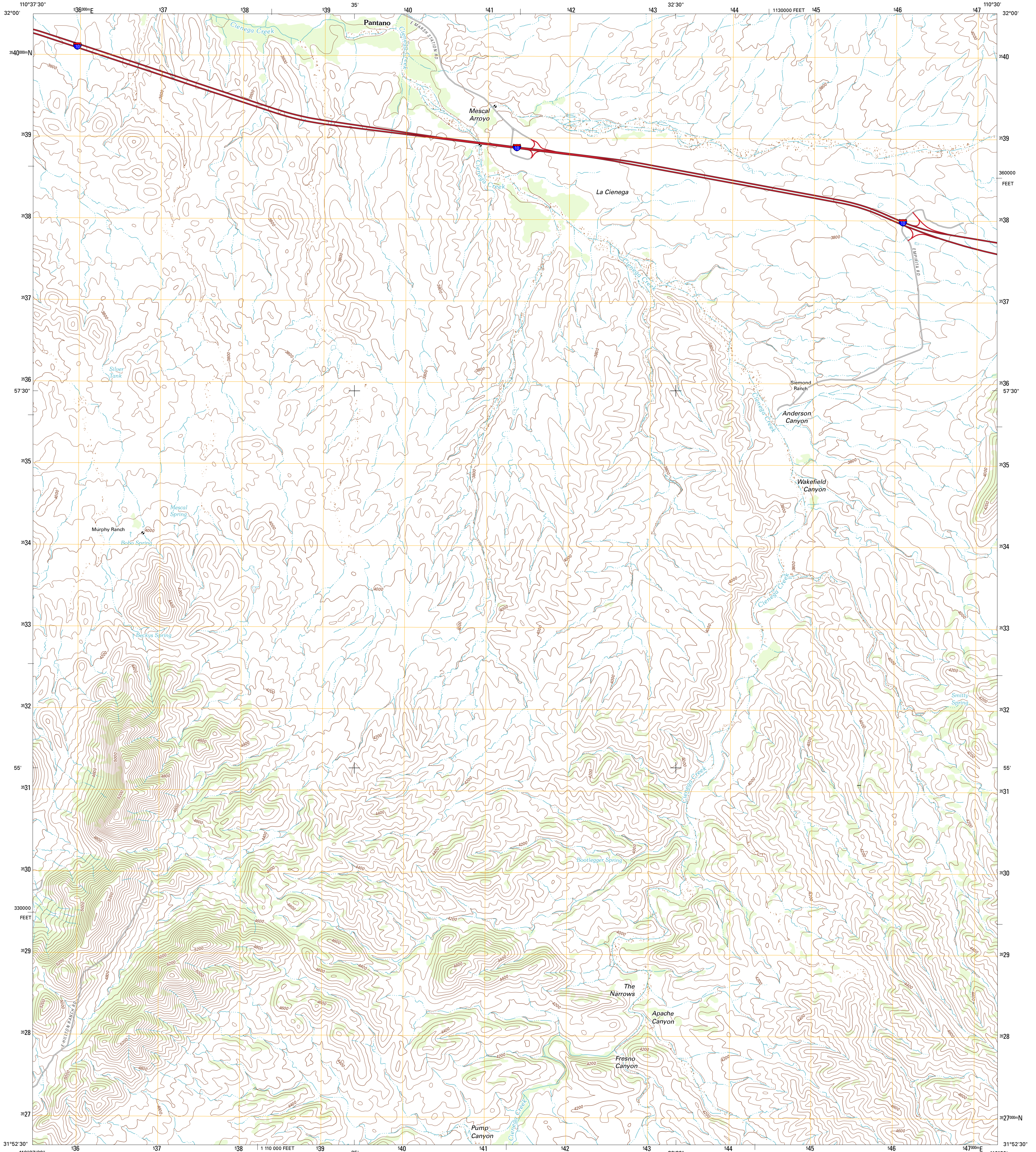




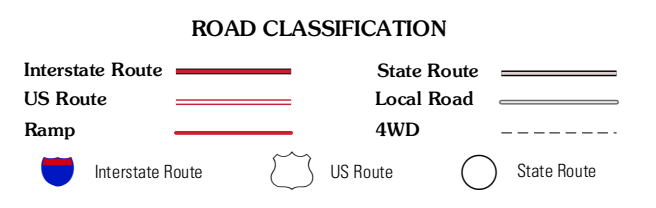
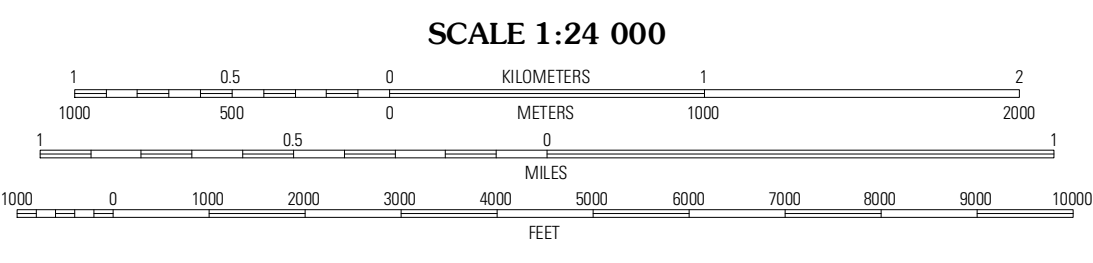
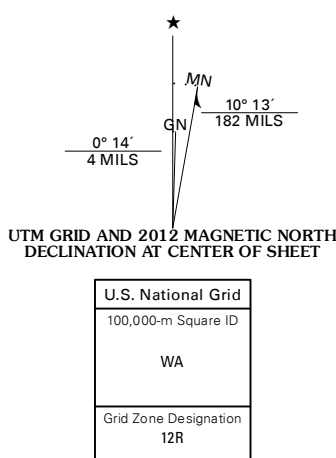
U.S. DEPARTMENT OF THE INTERIOR  
U. S. GEOLOGICAL SURVEY



THE NARROWS QUADRANGLE  
ARIZONA-PIMA CO.  
7.5-MINUTE SERIES



Produced by the United States Geological Survey  
North American Datum of 1983 (NAD83)  
World Geodetic System of 1984 (WGS84) Projection and  
1 000-meter grid; Universal Transverse Mercator, Zone 12R  
10 000-foot ticks; Arizona Coordinate System of 1983  
(central zone)



QUADRANGLE LOCATION

Vail	Rincon Peak	Galleta Flat West
Mount Fagan	The Narrows	Mescal
Empire Ranch	Spring Water Canyon	Apache Peak

CONTOUR INTERVAL 40 FEET  
NORTH AMERICAN VERTICAL DATUM OF 1988

This map was produced to conform with the  
National Geospatial Program US Topo Product Standard, 2011.  
A metadata file associated with this product is draft version 0.6.1

THE NARROWS, AZ  
2012

ADJOINING 7.5 QUADRANGLES