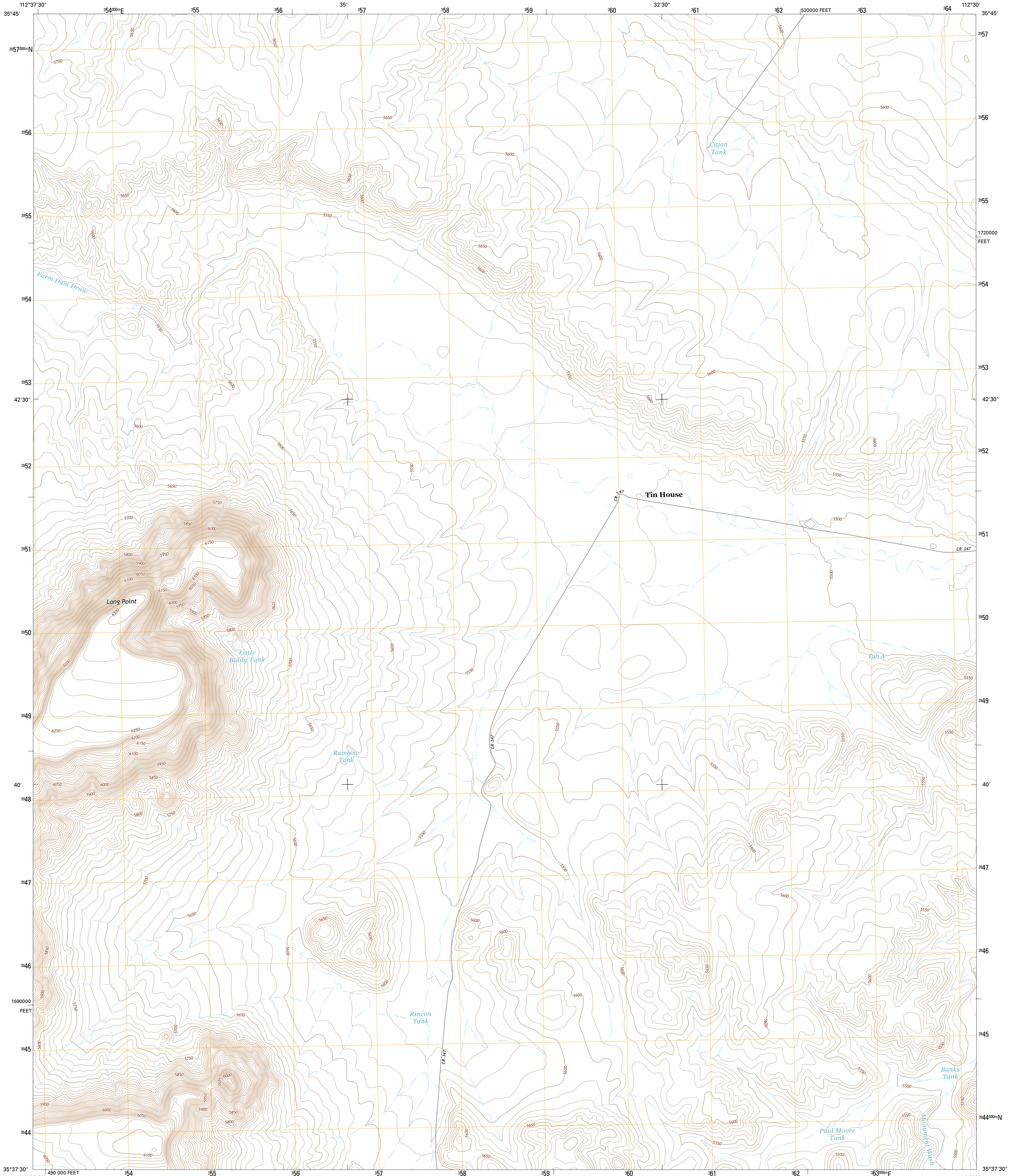




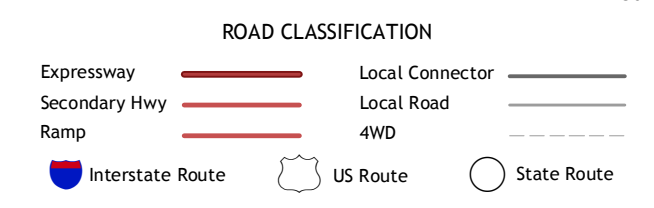
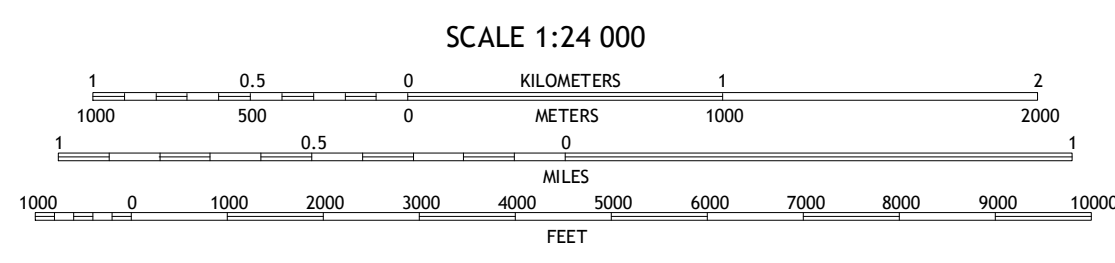
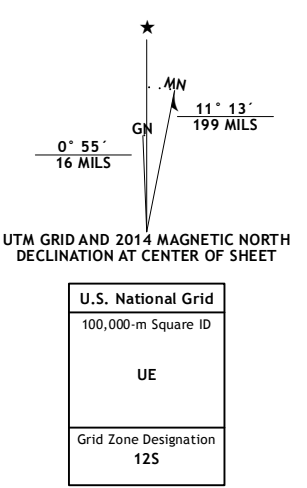
U.S. DEPARTMENT OF THE INTERIOR  
U.S. GEOLOGICAL SURVEY



TIN HOUSE QUADRANGLE  
ARIZONA-COCONINO CO.  
7.5-MINUTE SERIES



Produced by the United States Geological Survey  
North American Datum of 1983 (NAD83)  
World Geodetic System of 1984 (WGS84). Projection and  
1 000-meter grid: Universal Transverse Mercator, Zone 12S  
10 000-foot ticks: Arizona Coordinate System of 1983 (central  
zone)  
This map is not a legal document. Boundaries may be  
generalized for this map scale. Private lands within government  
reservations may not be shown. Obtain permission before  
entering private lands.  
Imagery.....NAIP, June 2013  
Roads.....HERE, ©2013  
Names.....GNIS, 2013  
Hydrography.....National Hydrography Dataset, 2013  
Contours.....National Elevation Dataset, 2000  
Boundaries.....Multiple sources; see metadata file 1972 - 2014  
Public Land Survey System.....BLM, 2011



ADJOINING QUADRANGLES

1	2	3
4	5	6
7	8	

- 1 Hazen Hole Tank
- 2 Rosebud Tank
- 3 Little Harjo Canyon
- 4 Black Tank
- 5 Markham Dam
- 6 Bishop Lake
- 7 Howard Spring
- 8 Red Hill Ranch

TIN HOUSE, AZ  
2014

