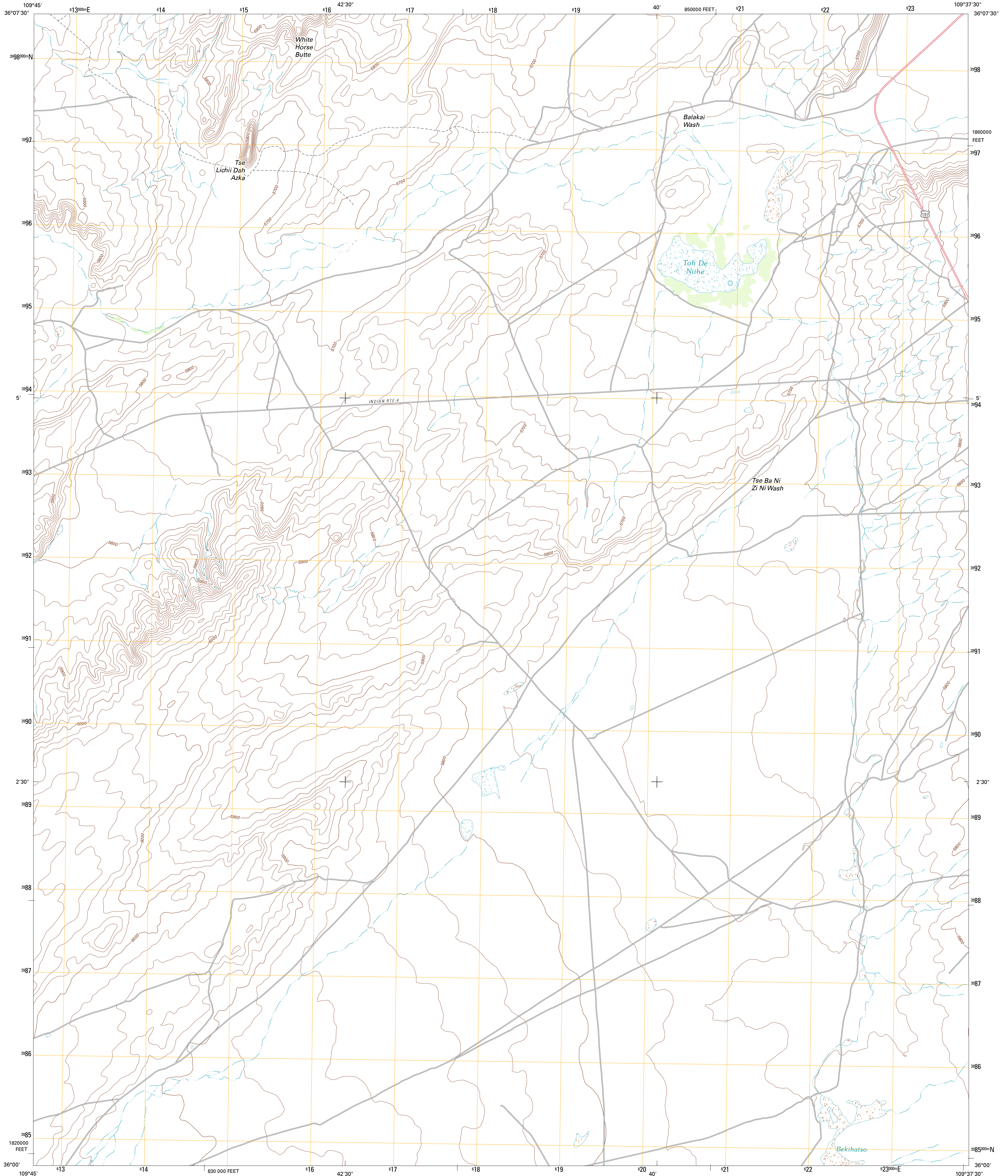




U.S. DEPARTMENT OF THE INTERIOR  
U. S. GEOLOGICAL SURVEY

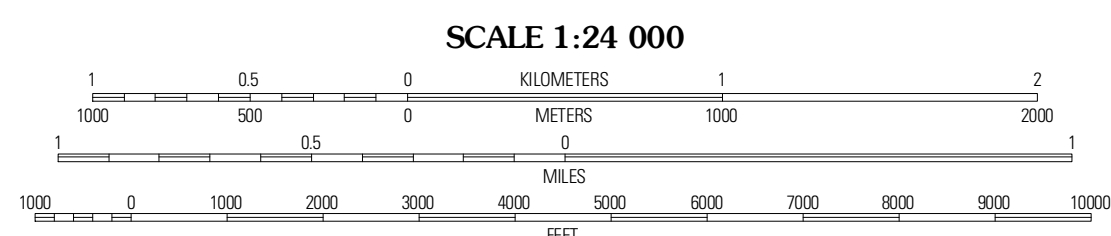
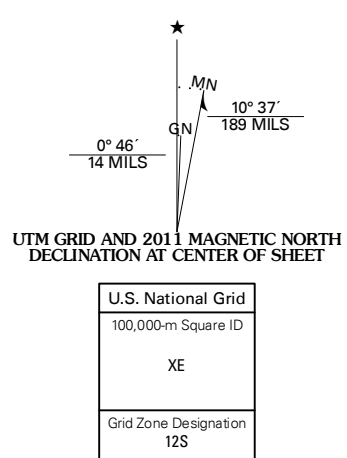


TOH DE NIHE QUADRANGLE  
ARIZONA-APACHE CO.  
7.5-MINUTE SERIES



Produced by the United States Geological Survey  
North American Datum of 1983 (NAD83)  
World Geodetic System of 1984 (WGS84), Projection and  
10 000-meter grid: Universal Transverse Mercator, Zone 12S  
10 000-foot ticks: Arizona Coordinate System of 1983 (east zone)

Imagery.....NAIP, June 2010  
Roads.....02/06-2011 TomTom  
Names.....GNIS, 2011  
Hydrography.....National Hydrography Dataset, 2007  
Contours.....National Elevation Dataset, 1999  
Boundaries.....Census, IBWC, IBC, USCS, 1972 - 2010



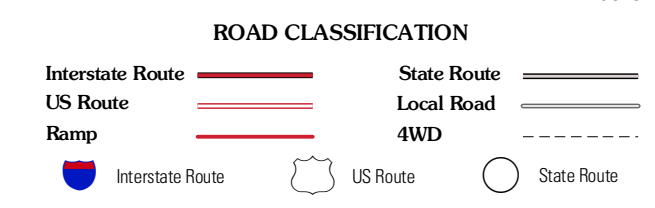
CONTOUR INTERVAL 20 FEET  
NORTH AMERICAN VERTICAL DATUM OF 1988

This map was produced to conform with the  
National Geospatial Program US Topo Product Standard, 2011.  
A metadata file associated with this product is draft version 0.6.1



QUADRANGLE LOCATION

Lohali Point	Ventana Mesa	Chinle
Salina	Toh De Nihe	Little White House Ruins
Seacomb Rock NE	Toloni	Beautiful Valley Well



TOH DE NIHE, AZ  
2011

ADJOINING 7.5' QUADRANGLES