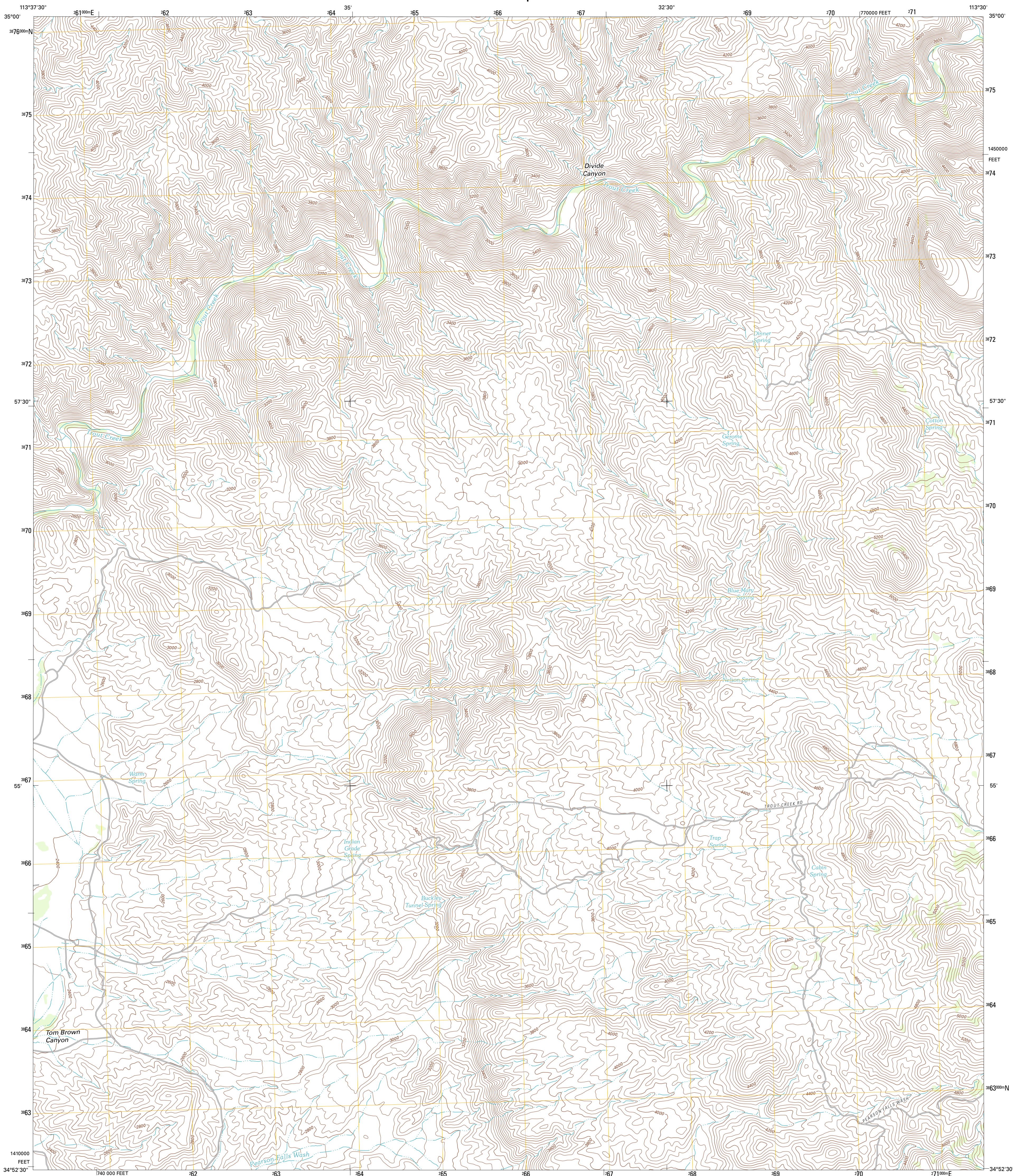




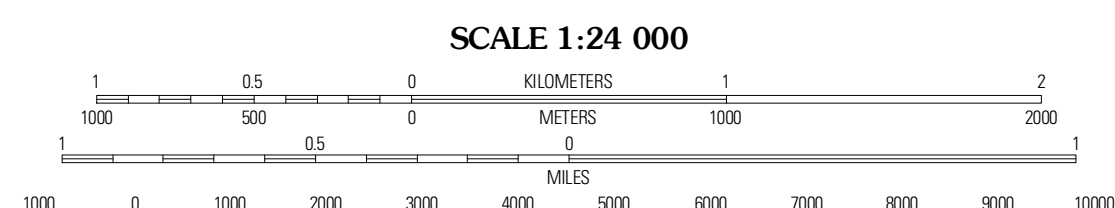
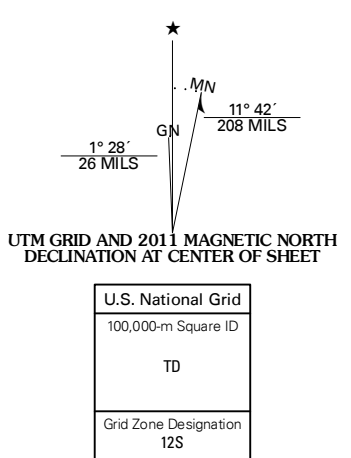
U.S. DEPARTMENT OF THE INTERIOR  
U. S. GEOLOGICAL SURVEY



TOM BROWN CANYON QUADRANGLE  
ARIZONA-MOHAVE CO.  
7.5-MINUTE SERIES



Produced by the United States Geological Survey  
North American Datum of 1983 (NAD83)  
World Geodetic System of 1984 (WGS84). Projection and  
1 000-meter grid: Universal Transverse Mercator, Zone 12S  
10 000-foot ticks: Arizona Coordinate System of 1983 (west  
zone)



CONTOUR INTERVAL 40 FEET  
NORTH AMERICAN VERTICAL DATUM OF 1988

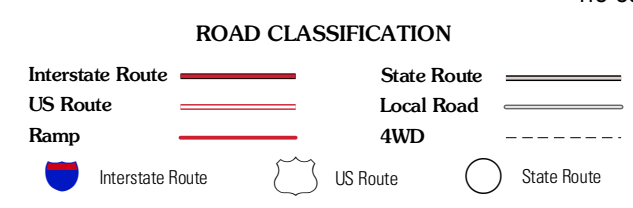
This map was produced to conform with the  
National Geospatial Program US Topo Product Standard, 2011.  
A metadata file associated with this product is draft version 0.6.1



QUADRANGLE LOCATION

Bottleneck Wash	Austin Peak	Penitentiary Mountain
Pilgrim Wash	Tom Brown Canyon	Gonzales Wash
Gunsight Canyon	Tule Wash	Cedar Basin

ADJOINING 7.5 QUADRANGLES



TOM BROWN CANYON, AZ  
2011