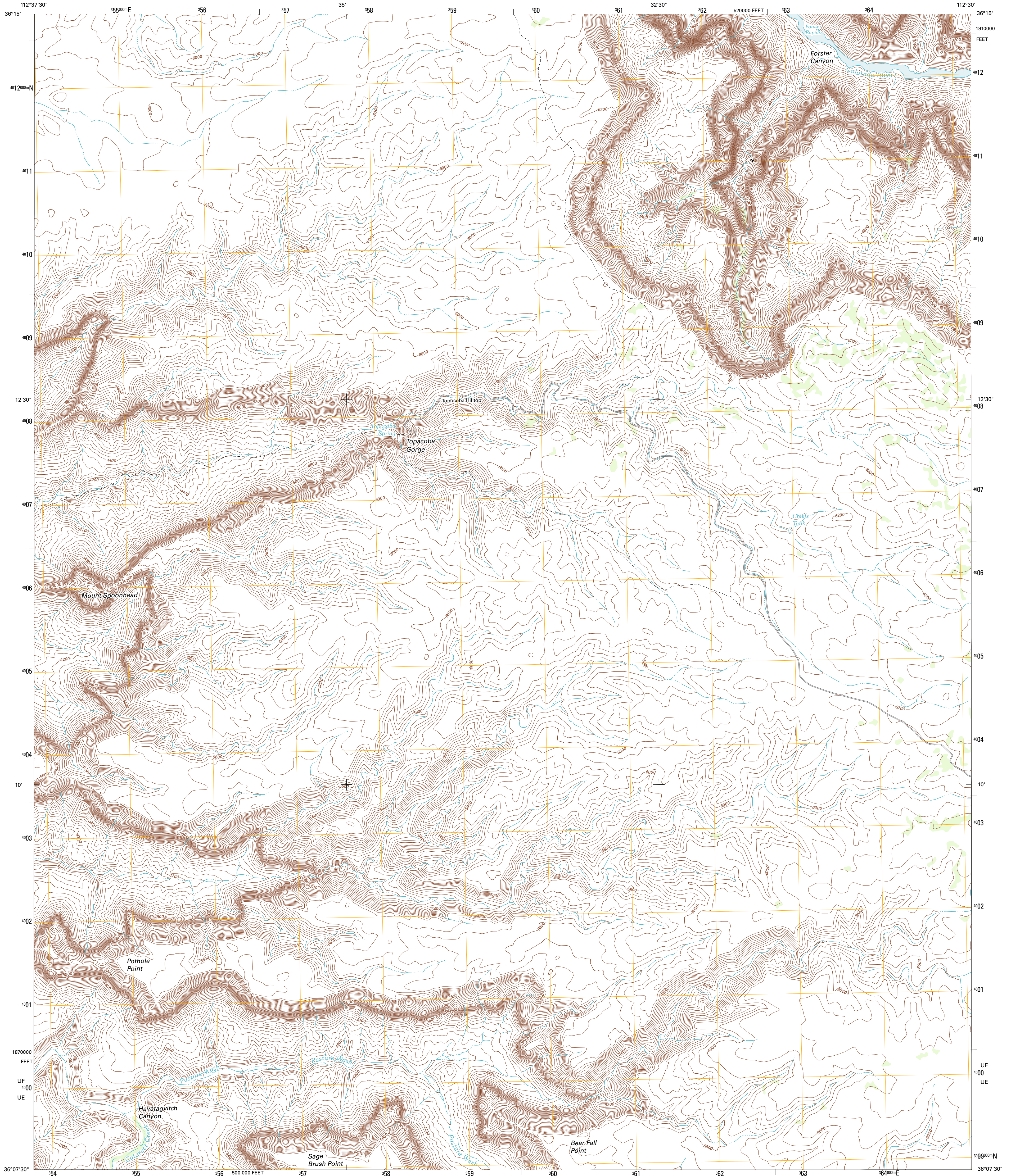




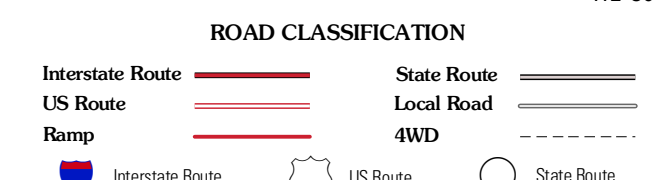
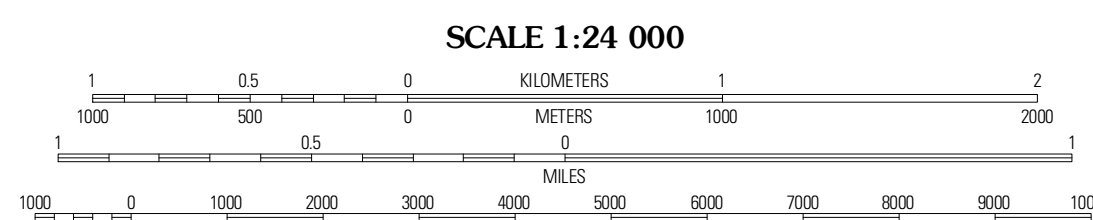
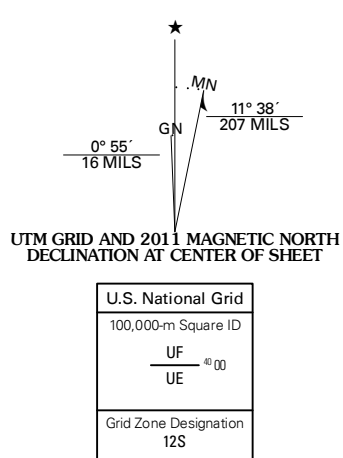
U.S. DEPARTMENT OF THE INTERIOR  
U. S. GEOLOGICAL SURVEY



TOPOCOBA HILLTOP QUADRANGLE  
ARIZONA-COCONINO CO.  
7.5-MINUTE SERIES



Produced by the United States Geological Survey  
North American Datum of 1983 (NAD83)  
World Geodetic System of 1984 (WGS84). Projection and  
1 000-meter grid: Universal Transverse Mercator, Zone 12S  
10 000-foot ticks: Arizona Coordinate System of 1983  
(central zone)



QUADRANGLE LOCATION

Havasai Falls	Fossil Bay	Powell Plateau
Supai	Topocoba Hilltop	Explorers Monument
Driftwood Canyon	Antelope Point	Chamisa Tank

CONTOUR INTERVAL 40 FEET  
NORTH AMERICAN VERTICAL DATUM OF 1988

This map was produced to conform with the  
National Geospatial Program US Topo Product Standard, 2011.  
A metadata file associated with this product is draft version 0.6.1

TOPOCOBA HILLTOP, AZ  
2011

ADJOINING 7.5' QUADRANGLES