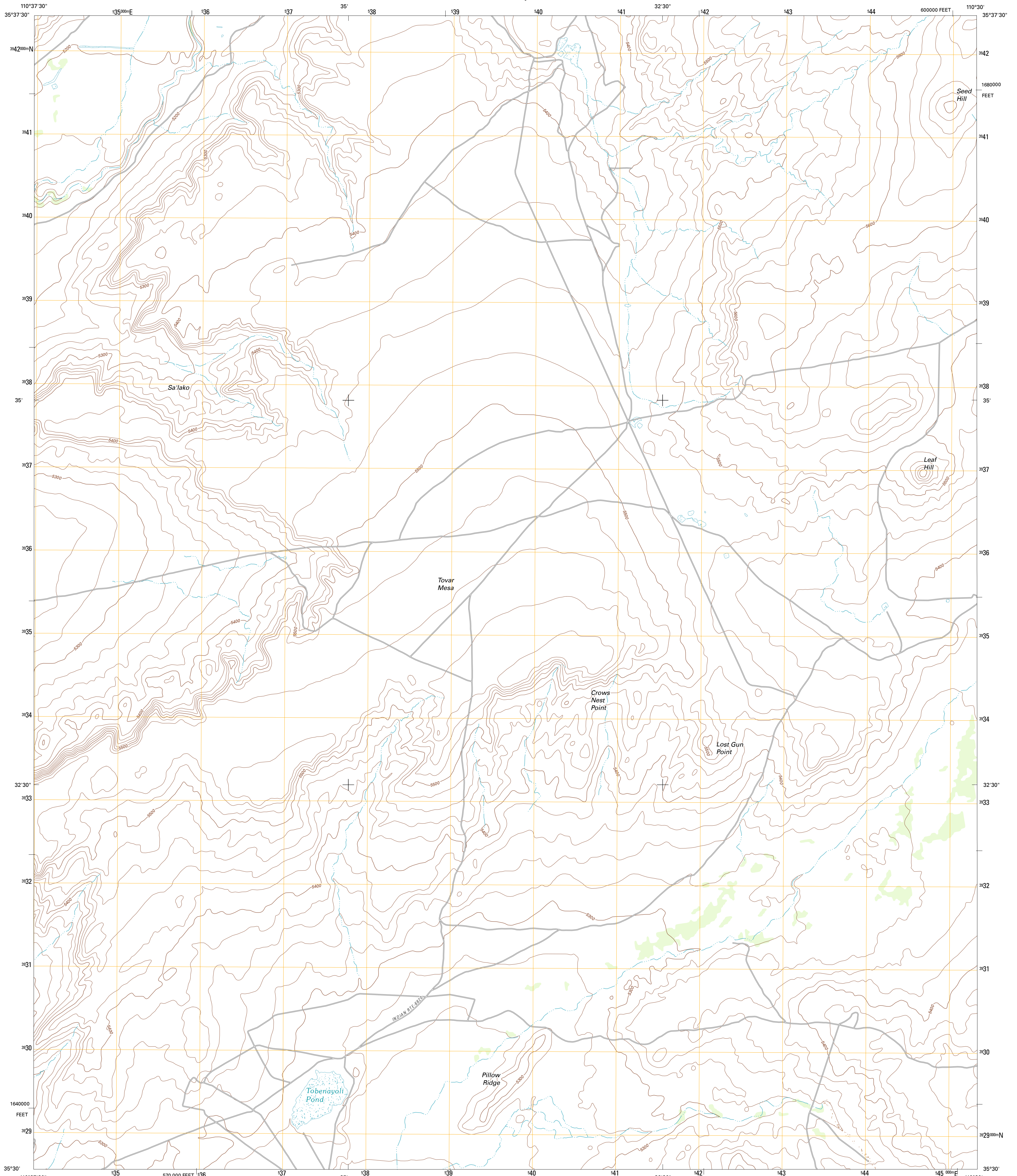




U.S. DEPARTMENT OF THE INTERIOR
U. S. GEOLOGICAL SURVEY

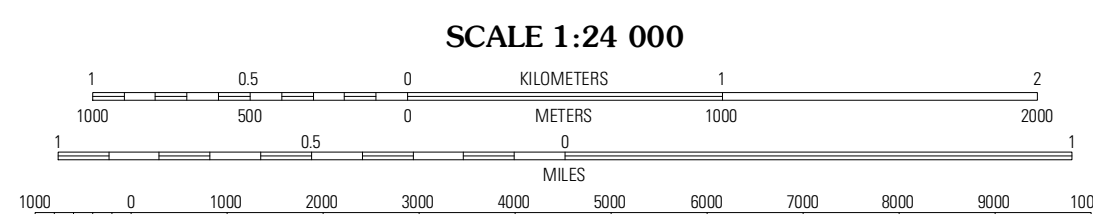
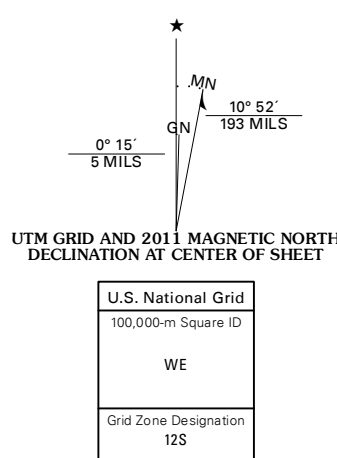


TOVAR MESA EAST QUADRANGLE
ARIZONA-NAVAJO CO.
7.5-MINUTE SERIES



Produced by the United States Geological Survey
North American Datum of 1983 (NAD83)
World Geodetic System of 1984 (WGS84). Projection and
10 000-meter grid: Universal Transverse Mercator, Zone 12S
10 000-foot ticks: Arizona Coordinate System of 1983 (east
zone)

Imagery: NAIIP, June 2010
Roads: ©2006-2011 TomTom
Names: GNIS, 2011
Hydrography: National Hydrography Dataset, 2010
Contours: National Elevation Dataset, 1999
Boundaries: Census, IBWC, IBC, USGS, 1972-2010



CONTOUR INTERVAL 20 FEET
NORTH AMERICAN VERTICAL DATUM OF 1988

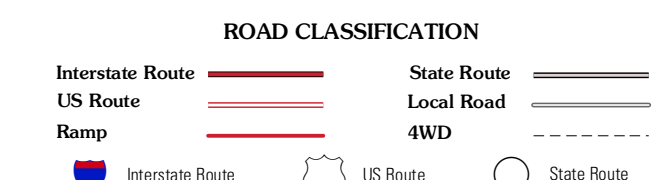
This map was produced to conform with the
National Geospatial Program US Topo Product Standard, 2011.
A metadata file associated with this product is draft version 0.6.1



QUADRANGLE LOCATION

Burro Spring	Giant Chair	Snake Butte
Tovar Mesa West	Tovar Mesa East	Egloffstein Butte
Montezuma Chair NW	Montezuma Chair	Shono Butte

ADJOINING 7.5' QUADRANGLES



TOVAR MESA EAST, AZ
2011