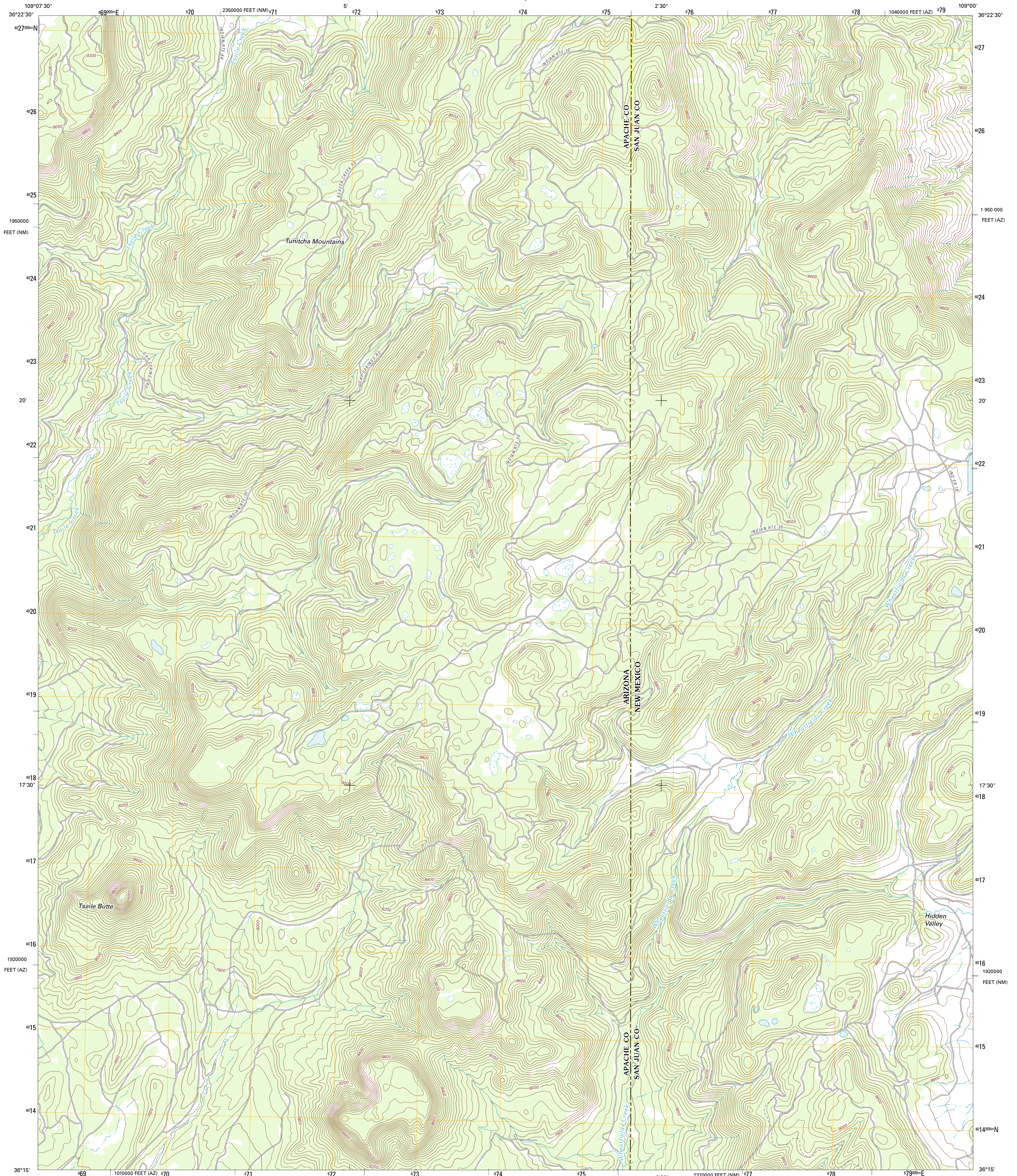




U.S. DEPARTMENT OF THE INTERIOR
U. S. GEOLOGICAL SURVEY

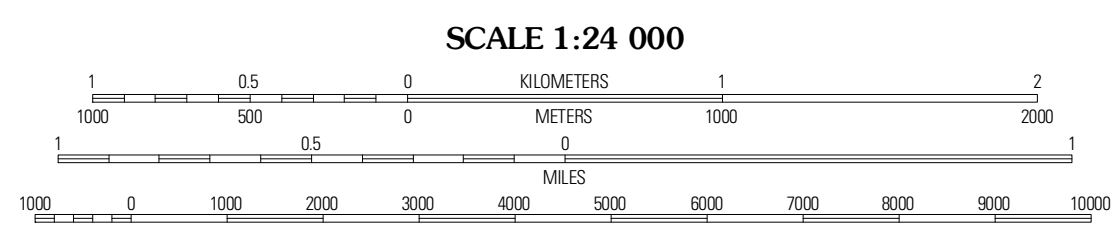
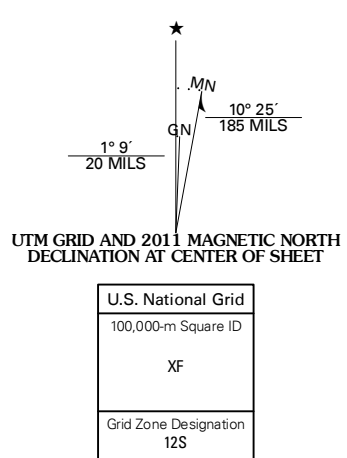


TSAILE BUTTE QUADRANGLE
ARIZONA-NEW MEXICO
7.5-MINUTE SERIES



Produced by the United States Geological Survey
North American Datum of 1983 (NAD83)
World Geodetic System of 1984 (WGS84). Projection and
1 000-meter grid: Universal Transverse Mercator, Zone 12S
10 000-foot ticks: Arizona Coordinate System of 1983 (east
zone), New Mexico Coordinate System of 1983 (west zone)

Imagery.....NAIP, June 2010
Roads.....9/2006-2011 TomTom
Names.....GNIS, 2011
Hydrography.....National Hydrography Dataset, 2007
Contours.....National Elevation Dataset, 1999
Boundaries.....Census, IBWC, IBC, USGS, 1972 - 2010



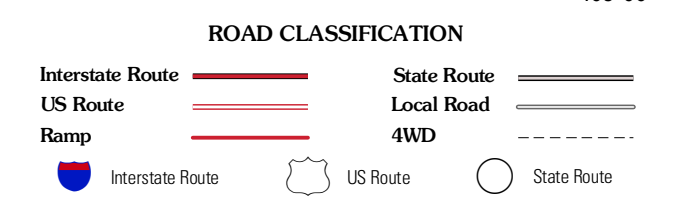
CONTOUR INTERVAL 40 FEET
NORTH AMERICAN VERTICAL DATUM OF 1988

This map was produced to conform with the
National Geospatial Program US Topo Product Standard, 2011.
A metadata file associated with this product is draft version 0.6.1



QUADRANGLE LOCATION

Lukachukai	Roof Butte	Sanctus West
Tsailer	Tsailer Butte	Old Pine Spring
Lower Wheatfields	Upper Wheatfields	Toadlena



TSAILE BUTTE, AZ-NM
2011

ADJOINING 7.5 QUADRANGLES