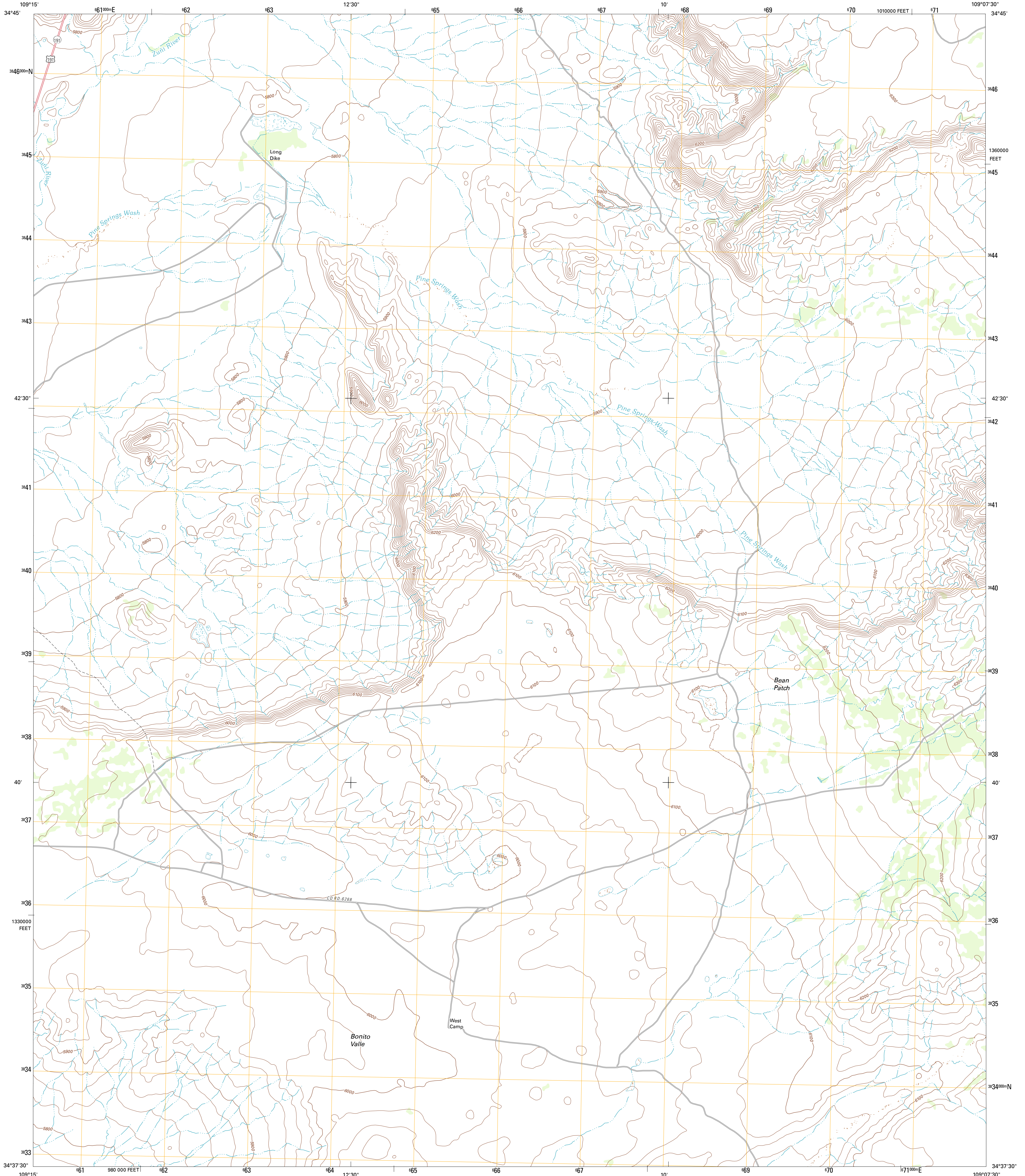




U.S. DEPARTMENT OF THE INTERIOR  
U. S. GEOLOGICAL SURVEY

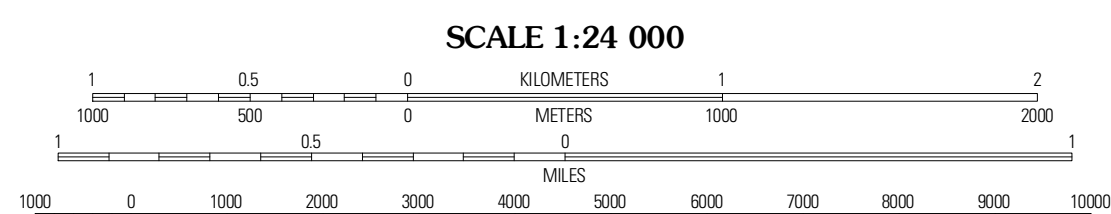
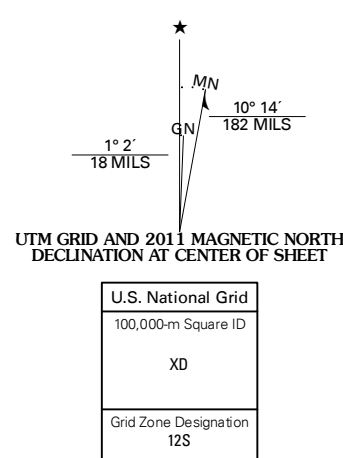


VALLE BONITO QUADRANGLE  
ARIZONA-APACHE CO.  
7.5-MINUTE SERIES



Produced by the United States Geological Survey  
North American Datum of 1983 (NAD83)  
World Geodetic System of 1984 (WGS84). Projection and  
1 000-meter grid: Universal Transverse Mercator, Zone 12S  
10 000-foot ticks: Arizona Coordinate System of 1983 (east  
zone)

Imagery: NAIP, June 2010  
Roads: 2006-2011 TomTom  
Names: GNS, 2011  
Hydrography: National Hydrography Dataset, 2007  
Contours: National Elevation Dataset, 1999  
Boundaries: Census, IBWC, IBC, USGS, 1972 - 2010



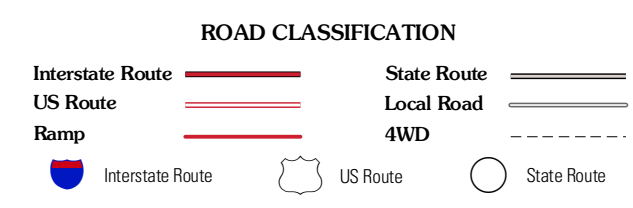
CONTOUR INTERVAL 20 FEET  
NORTH AMERICAN VERTICAL DATUM OF 1988  
This map was produced to conform with the  
National Geospatial Program US Topo Product Standard, 2011.  
A metadata file associated with this product is draft version 0.6.1



QUADRANGLE LOCATION

Prospect Spring	Cedro Spring	Cedro Spring SE
Schneble Well	Valle Bonito	Valle Bonito NE
Saint Johns North	Kearn Lake	Carrizito Spring

ADJOINING 7.5 QUADRANGLES



VALLE BONITO, AZ  
2011