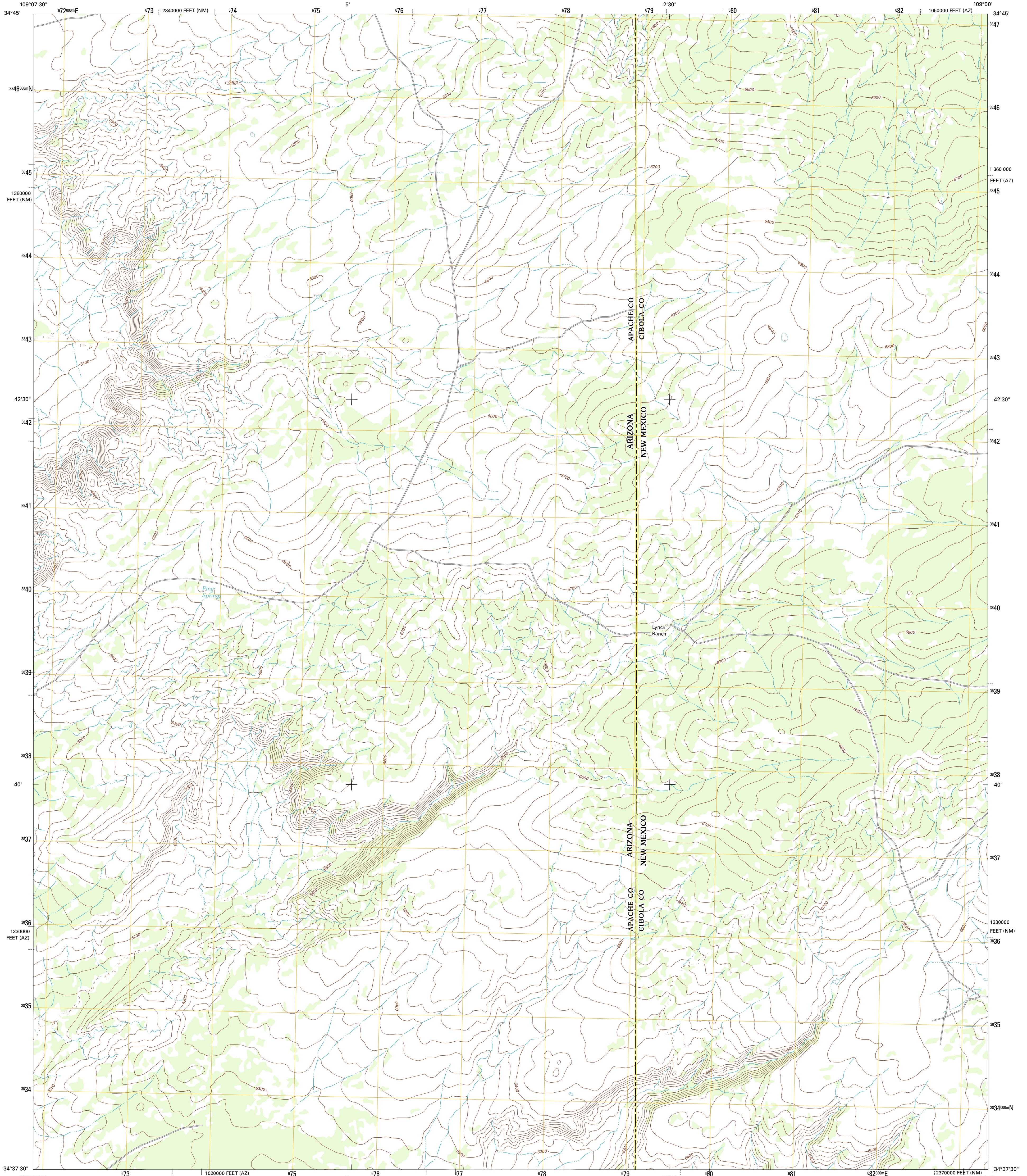




U.S. DEPARTMENT OF THE INTERIOR
U. S. GEOLOGICAL SURVEY

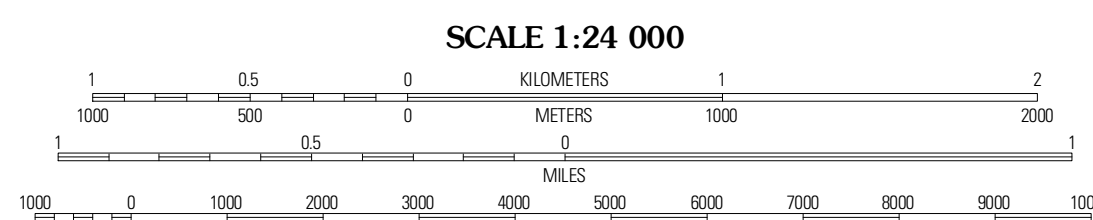
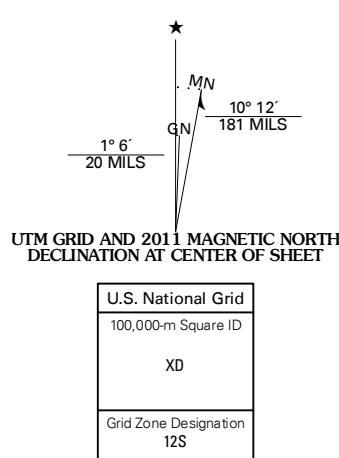


VALLE BONITO NE QUADRANGLE
ARIZONA-NEW MEXICO
7.5-MINUTE SERIES



Produced by the United States Geological Survey
North American Datum of 1983 (NAD83)
World Geodetic System of 1984 (WGS84), Projection and
1 000-foot ticks: Arizona Coordinate System of 1983 (east zone),
New Mexico Coordinate System of 1983 (west zone)

Imagery: NAIP, June 2010
Roads: 2006-2011 TomTom
Names: GNS, 2011
Hydrography: National Hydrography Dataset, 2007
Contours: National Elevation Dataset, 1999
Boundaries: Census, IBWC, IBC, USGS, 1972-2010



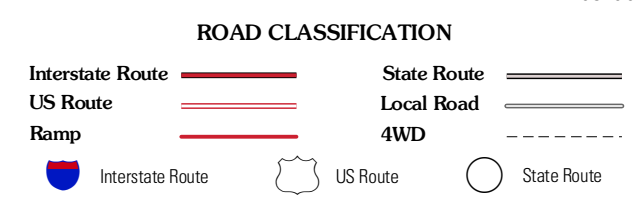
CONTOUR INTERVAL 20 FEET
NORTH AMERICAN VERTICAL DATUM OF 1988
This map was produced to conform with the
National Geospatial Program US Topo Product Standard, 2011.
A metadata file associated with this product is draft version 0.6.1



QUADRANGLE LOCATION

Cedro Spring	Cedro Spring SE	Vendito Camp
Valle Bonito	Valle Bonito NE	Cantano Spring
Kearns Lake	Carrizito Spring	Twentytwo Spring

ADJOINING 7.5 QUADRANGLES



VALLE BONITO NE, AZ-NM
2011