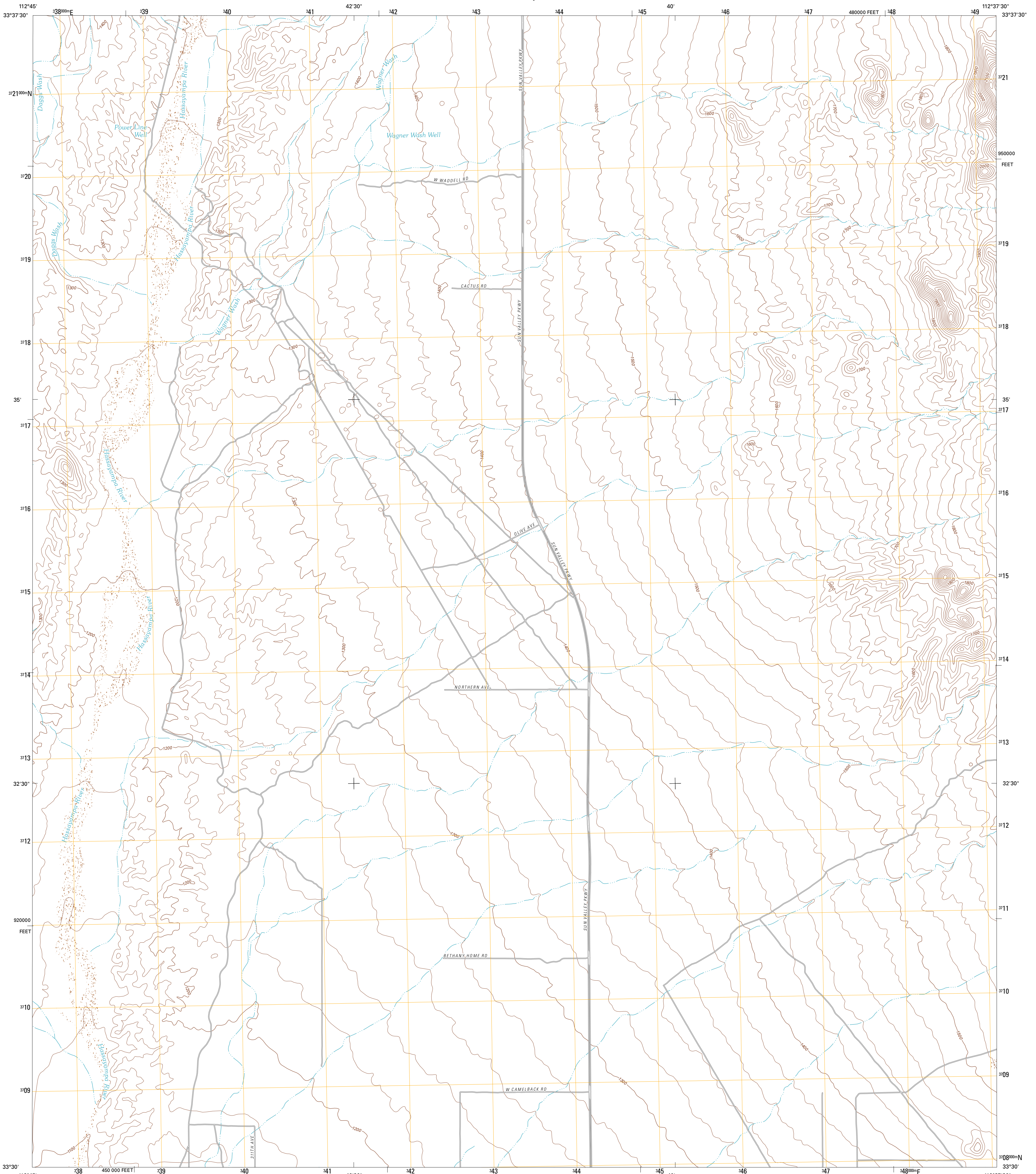




U.S. DEPARTMENT OF THE INTERIOR
U. S. GEOLOGICAL SURVEY

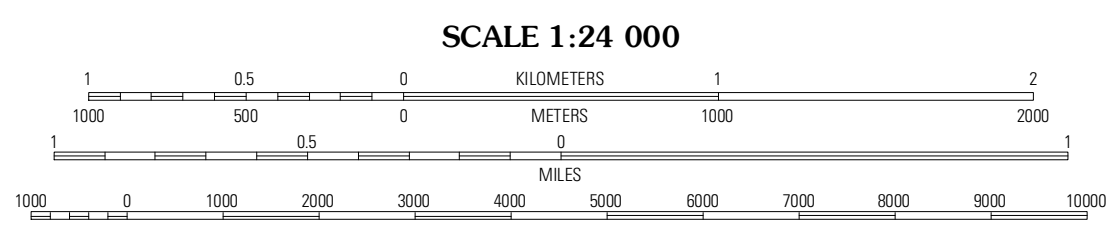
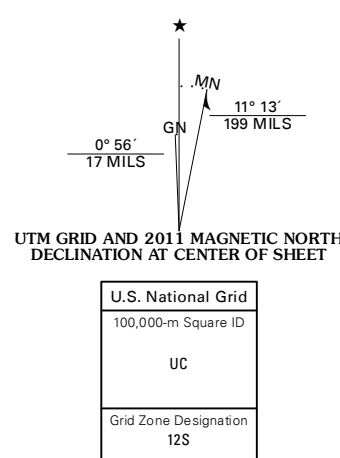


WAGNER WASH WELL QUADRANGLE
ARIZONA-MARICOPA CO.
7.5-MINUTE SERIES



Produced by the United States Geological Survey
North American Datum of 1983 (NAD83)
World Geodetic System of 1984 (WGS84) Projection and
1 000-meter grid; Universal Transverse Mercator, Zone 12S
10 000-foot ticks; Arizona Coordinate System of 1983
(central zone)

Imagery: NIP, June 2010
Roads: ©2006-2011 TomTom
Names: GNS, 2011
Hydrography: National Hydrography Dataset, 2010
Contours: National Elevation Dataset, 2003
Boundaries: Census, BWC, IBC, USGS, 1972 - 2010



CONTOUR INTERVAL 20 FEET
NORTH AMERICAN VERTICAL DATUM OF 1988

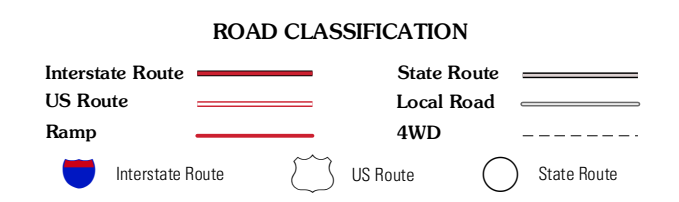
This map was produced to conform with the
National Geospatial Program US Topo Product Standard, 2011.
A metadata file associated with this product is draft version 0.6.1



QUADRANGLE LOCATION

Star Well	Daggs Tank	White Tank Mountains NE
Flatiron Mountain	Wagner Wash Well	White Tank Mountains
Wintersburg	Buckeye NW	Valencia

ADJOINING 7.5' QUADRANGLES



WAGNER WASH WELL, AZ
2011