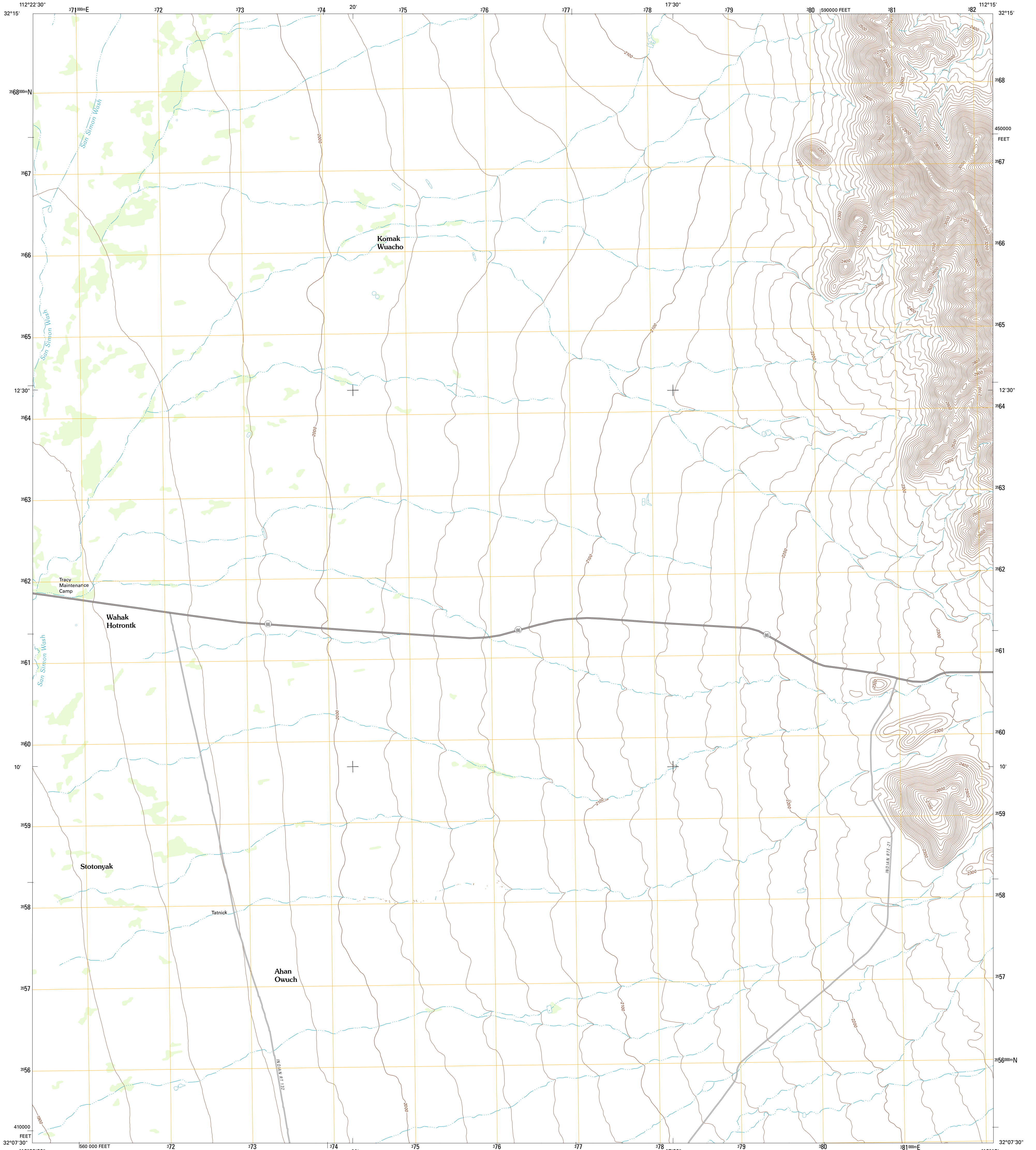




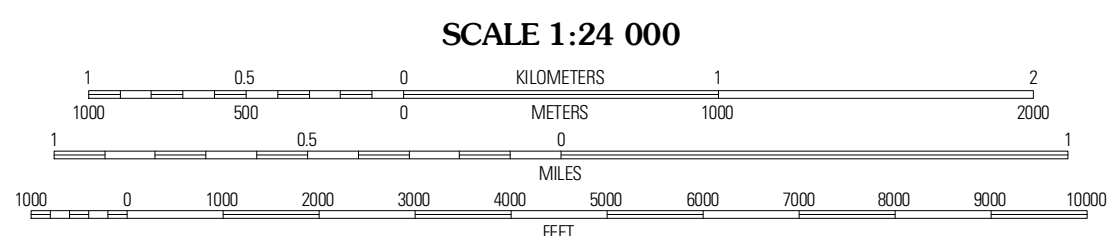
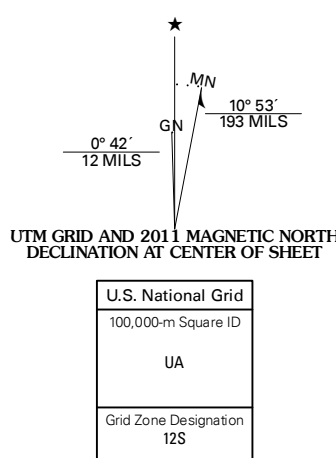
U.S. DEPARTMENT OF THE INTERIOR
U. S. GEOLOGICAL SURVEY



WAHAK HOTRONTK QUADRANGLE
ARIZONA-PIMA CO.
7.5-MINUTE SERIES



Produced by the United States Geological Survey
North American Datum of 1983 (NAD83)
World Geodetic System of 1984 (WGS84). Projection and
1 000-meter grid; Universal Transverse Mercator, Zone 12S
10 000-foot ticks; Arizona Coordinate System of 1983
(central zone)



CONTOUR INTERVAL 20 FEET
NORTH AMERICAN VERTICAL DATUM OF 1988

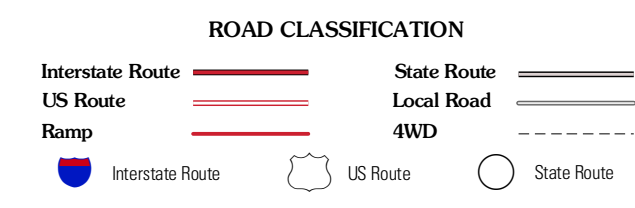
This map was produced to conform with the
National Geospatial Program US Topo Product Standard, 2011.
A metadata file associated with this product is draft version 0.6.1



QUADRANGLE LOCATION

Hickman	Vaya Chin	Window Mountain
West of Wahak Hotrontk	Wahak Hotrontk	Maish Vaya
West of Plainmo	Plainmo	Ben Nevis Mountain

ADJOINING 7.5 QUADRANGLES



WAHAK HOTRONTK, AZ
2011