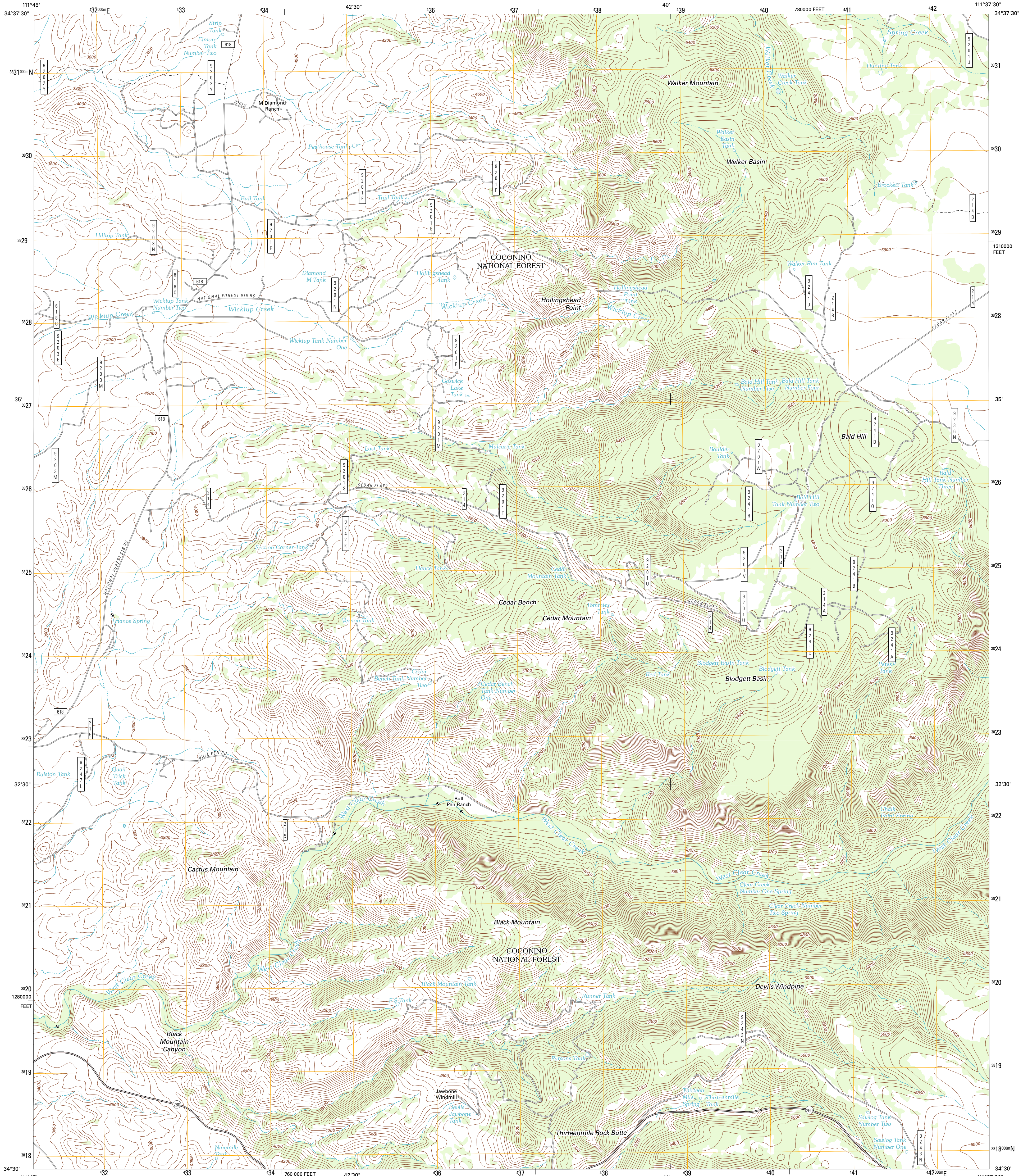




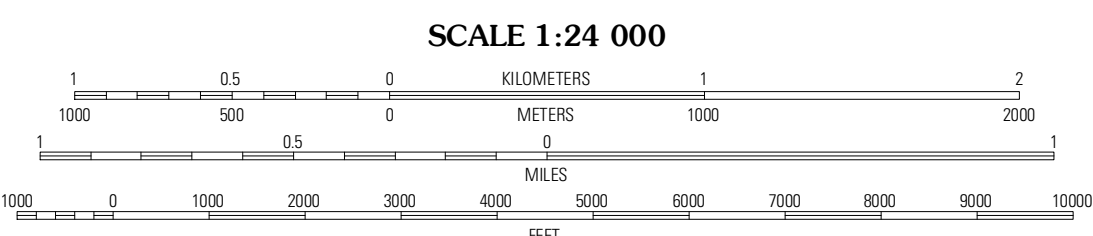
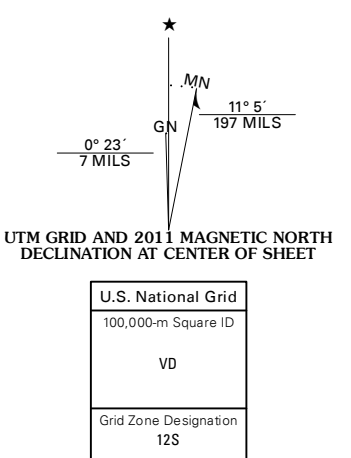
U.S. DEPARTMENT OF THE INTERIOR
U. S. GEOLOGICAL SURVEY



WALKER MOUNTAIN QUADRANGLE
ARIZONA-YAVAPAI CO.
7.5-MINUTE SERIES

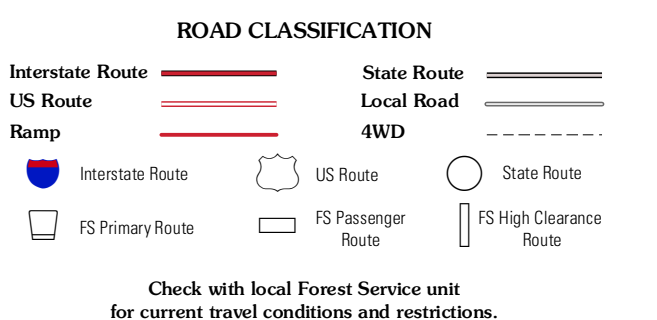


Produced by the United States Geological Survey
North American Datum of 1983 (NAD83)
World Geodetic System of 1984 (WGS84). Projection and
1 000-foot ticks: Arizona Coordinate System of 1983
(central zone)



QUADRANGLE LOCATION

Lake Montezuma	Casser Butte	Apache Mead Mountain
Camp Verde	Walker Mountain	Backhorn Mountain
Hornor Mountain	Hackberry Mountain	Strawberry



Imagery.....NAIP, June 2010
Roads.....02006-2011 TomTom
Roads within US Forest Service Lands.....FSTopo Data
with limited Forest Service updates, 2009
Names.....GNIS, 2011
Hydrography.....National Hydrography Dataset, 2010
Contours.....National Elevation Dataset, 2001
Boundaries.....Census, IBWC, IBC, USGS, 1972 - 2010

CONTOUR INTERVAL 40 FEET
NORTH AMERICAN VERTICAL DATUM OF 1988

This map was produced to conform with the
National Geospatial Program US Topo Product Standard, 2011.
A metadata file associated with this product is draft version 0.6.1

WALKER MOUNTAIN, AZ
2011

ADJOINING 7.5 QUADRANGLES