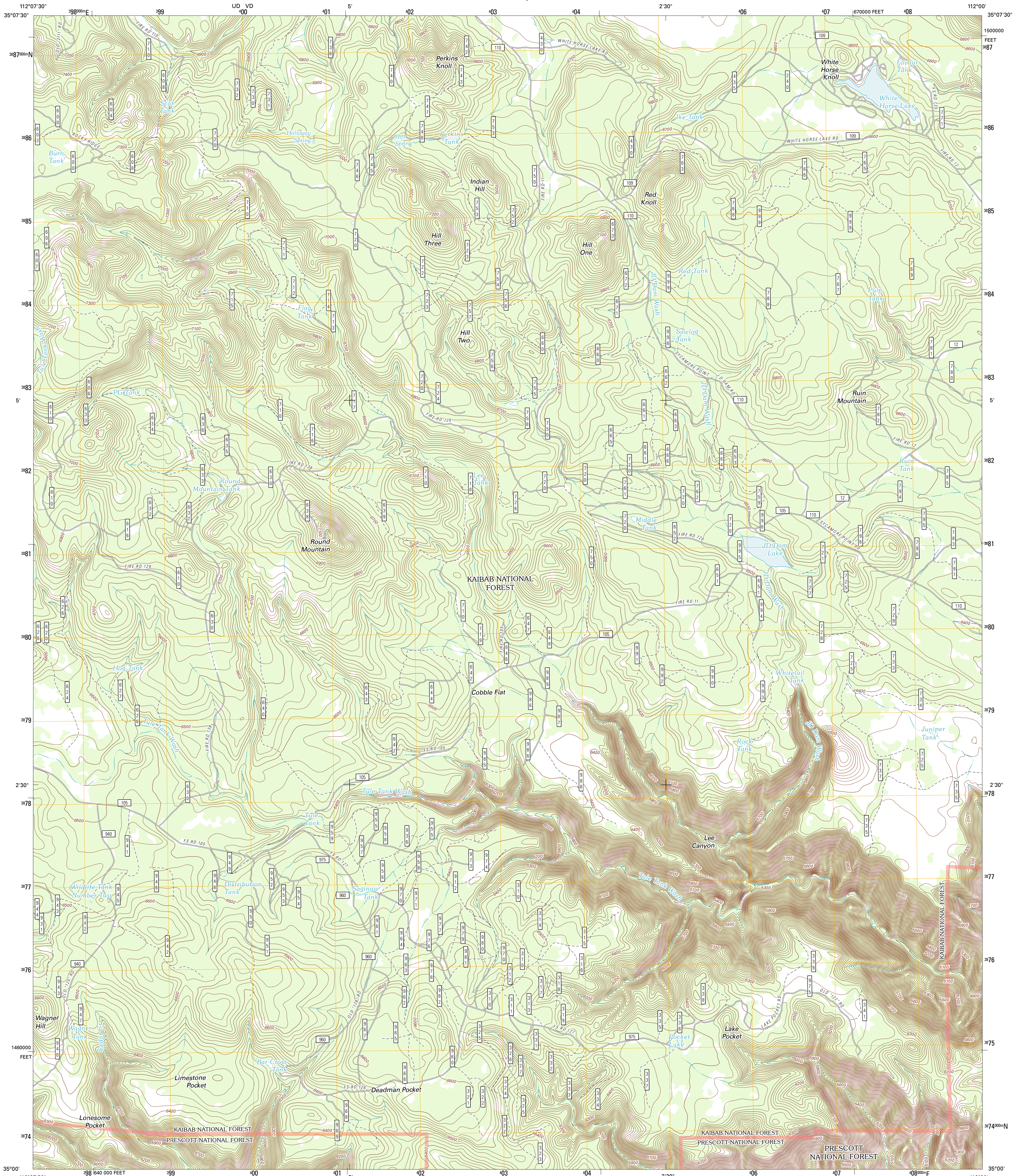




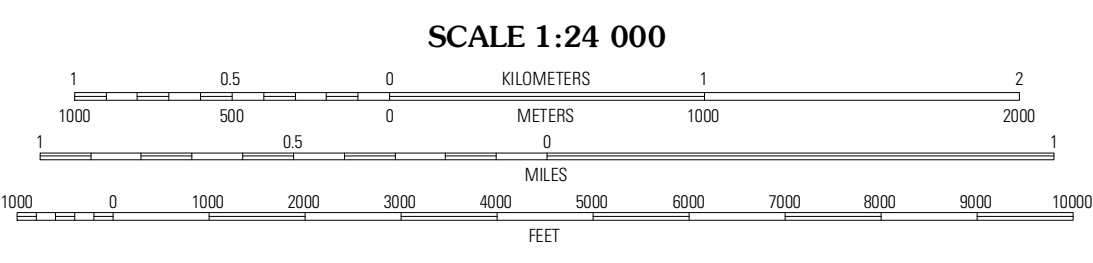
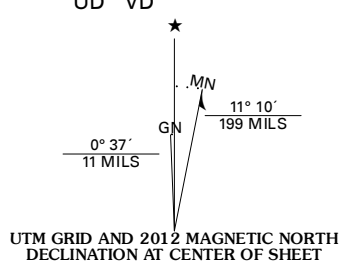
U.S. DEPARTMENT OF THE INTERIOR
U. S. GEOLOGICAL SURVEY



WHITE HORSE LAKE QUADRANGLE
ARIZONA-COCONINO CO.
7.5-MINUTE SERIES

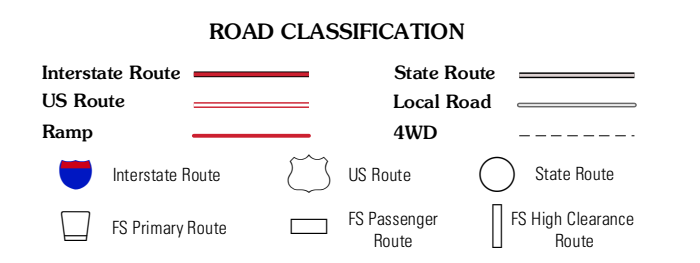


Produced by the United States Geological Survey
North American Datum of 1983 (NAD83)
World Geospatial System of 1984 (WGS84). Projection and
1 000-meter grid: Universal Transverse Mercator, Zone 12S
10 000-foot ticks: Arizona Coordinate System of 1983
(central zone)



QUADRANGLE LOCATION

Williams South	Davenport Hill	Garland Prairie
May Tank Pocket	White Horse Lake	Sycamore Point
Perkinsville	Sycamore Basin	Loy Butte



Check with local Forest Service unit for current travel conditions and restrictions.

Imagery: NADIP, June 2010
Roads: ©2006-2011 TomTom
Roads within US Forest Service Lands: FSTopo Data with limited Forest Service updates, 2009
Names: National Hydrography Dataset, 2011
Hydrography: National Hydrography Dataset, 2010
Contours: National Elevation Dataset, 2003
Boundaries: Census, IBWC, IBC, USGS, 1972 - 2010

U.S. National Grid

100,000-m Square ID	10
UD VD	11
Grid Zone Designation	12S

This map was produced to conform with the National Geospatial Program US Topo Product Standard, 2011. A metadata file associated with this product is draft version 0.6.1

WHITE HORSE LAKE, AZ
2012

ADJOINING 7.5 QUADRANGLES