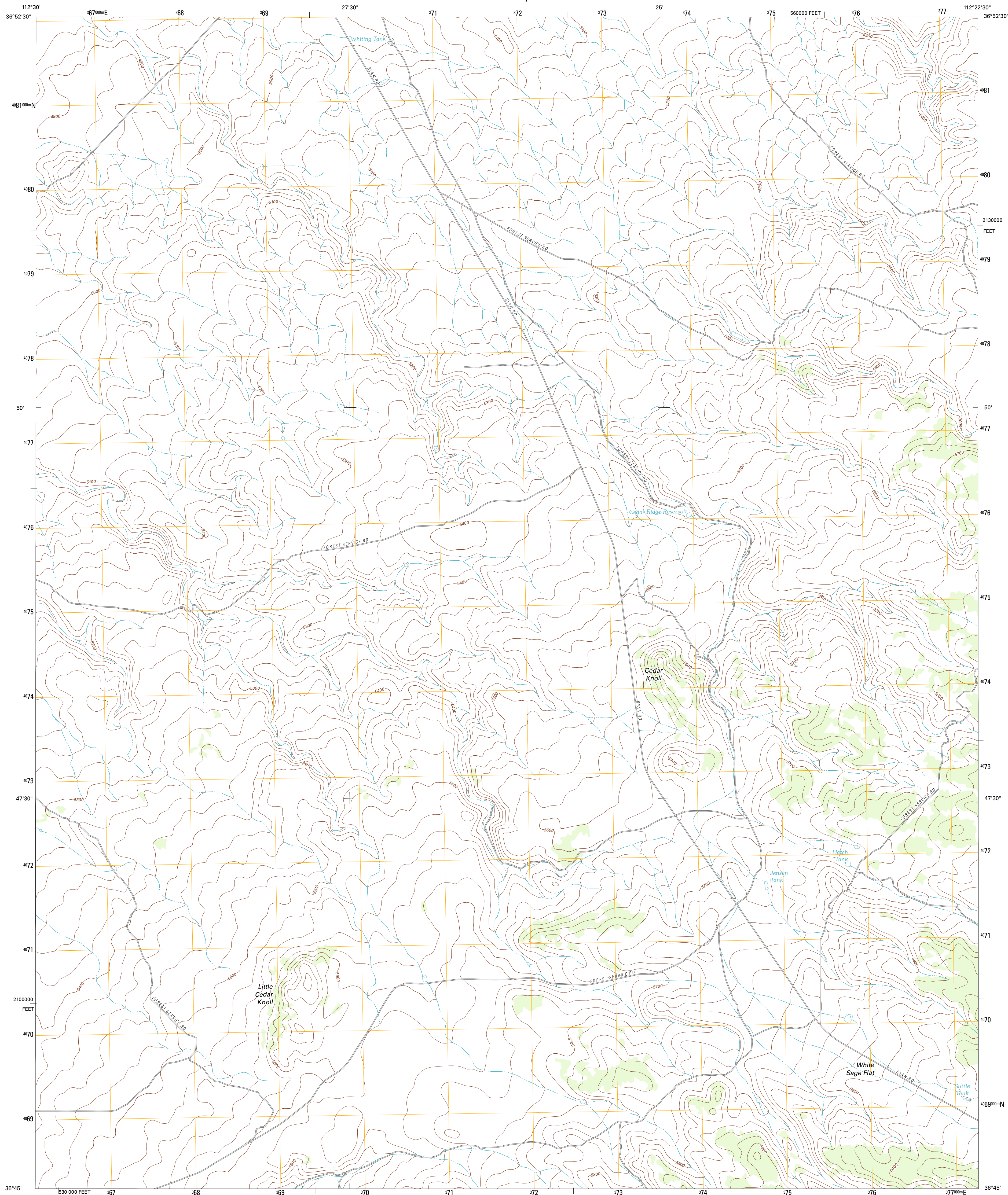




U.S. DEPARTMENT OF THE INTERIOR
U. S. GEOLOGICAL SURVEY

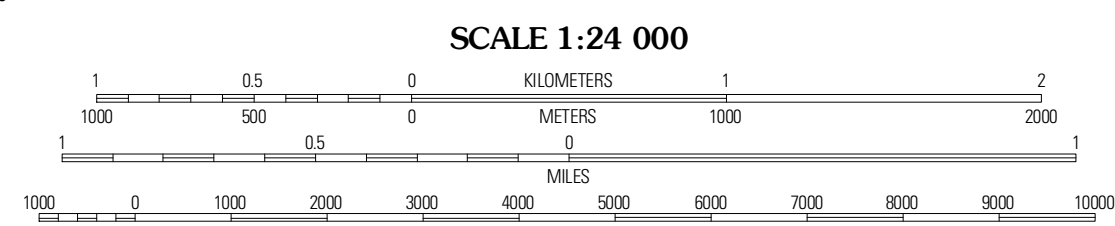
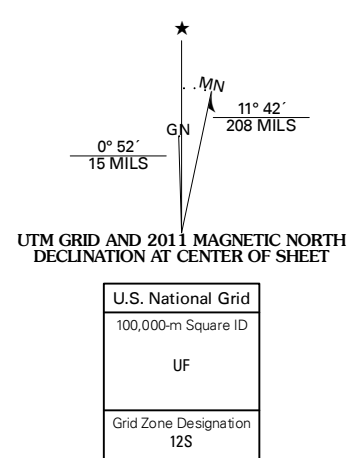


WHITE SAGE FLAT QUADRANGLE
ARIZONA-COCONINO CO.
7.5-MINUTE SERIES

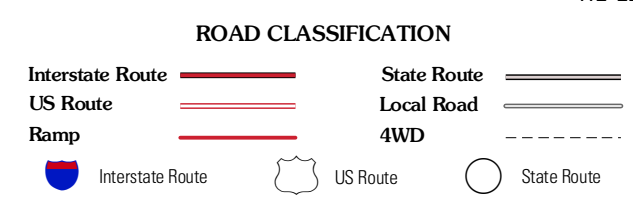


Produced by the United States Geological Survey
North American Datum of 1983 (NAD83)
Roads..... ©2006-2011 TomTom
World Geodetic System of 1984 (WGS84), Projection and
1 000-meter grid: Universal Transverse Mercator, Zone 12S
10 000-foot ticks: Arizona Coordinate System of 1983
(central zone)

Imagery..... N/AIP, June 2010
Roads..... ©2006-2011 TomTom
Names..... GNIS, 2011
Hydrography..... National Hydrography Dataset, 2007
Contours..... National Elevation Dataset, 1999
Boundaries..... Census, IDW, IBC, USGS, 1972 - 2010



CONTOUR INTERVAL 20 FEET
NORTH AMERICAN VERTICAL DATUM OF 1988
This map was produced to conform with the
National Geospatial Program US Topo Product Standard, 2011.
A metadata file associated with this product is draft version 0.6.1



QUADRANGLE LOCATION

Fredonia	Shinarump Point	Moggin's Flat
Clear Water Spring	White Sage Flat	Le Fèvre Ridge
Cansight Point	Toothpick Ridge	Warm Springs Canyon

WHITE SAGE FLAT, AZ
2011

ADJOINING 7.5' QUADRANGLES