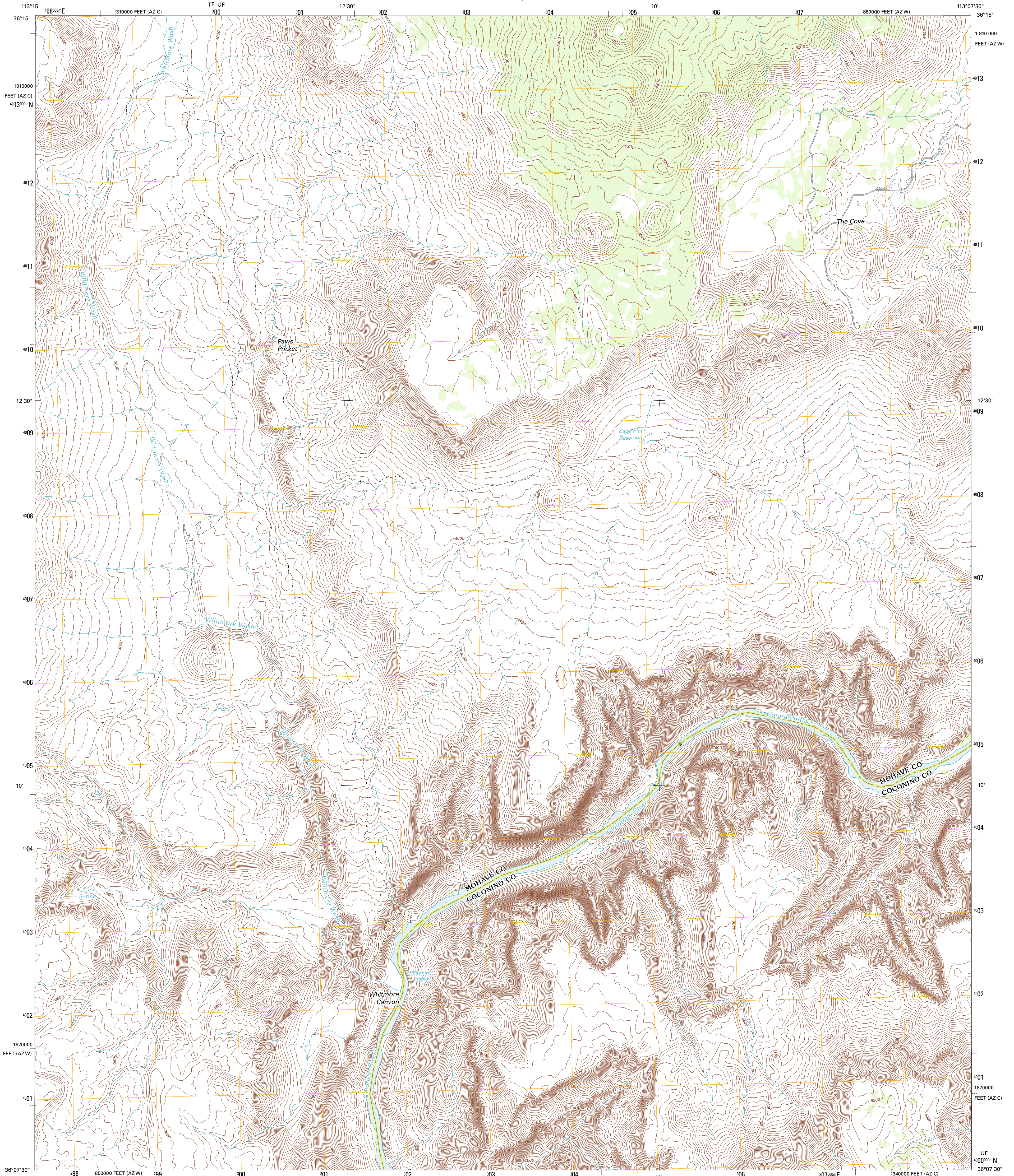




U.S. DEPARTMENT OF THE INTERIOR
U. S. GEOLOGICAL SURVEY



WHITMORE RAPIDS QUADRANGLE
ARIZONA
7.5-MINUTE SERIES

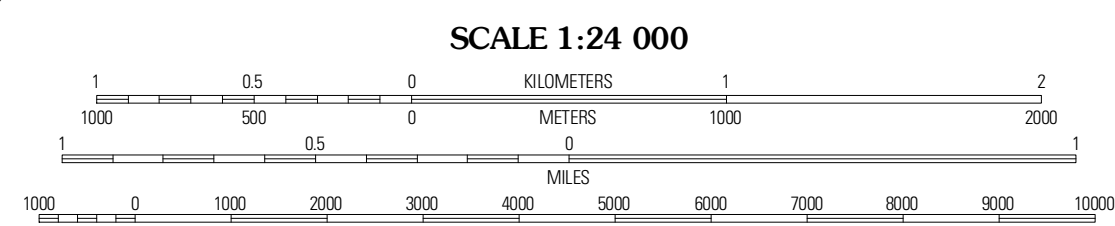


Produced by the United States Geological Survey
North American Datum of 1983 (NAD83)
World Geodetic System of 1984 (WGS84). Projection and
1 000-meter grid: Universal Transverse Mercator, Zone 12S
10 000-foot ticks: Arizona Coordinate System of 1983 (west
and central zones)

UTM GRID AND 2011 MAGNETIC NORTH DECLINATION AT CENTER OF SHEET

U.S. National Grid
100,000+ Square ID
TF UF
UE
Grid Zone Designation
12S

MN
11° 48' 21" N
210 MILS



CONTOUR INTERVAL 40 FEET
NORTH AMERICAN VERTICAL DATUM OF 1988

This map was produced to conform with the
National Geospatial Program US Topo Product Standard, 2011.
A metadata file associated with this product is draft version 0.6.1



ROAD CLASSIFICATION

Interstate Route (thick red line)
US Route (red line)
Ramp (red line with blue triangle)
State Route (thin red line)
Local Road (grey line)
4WD (dashed grey line)
State Route (circle with red line)

QUADRANGLE LOCATION

Cold Spring	Mount Logan	Mount Turnbull SE
Whitmore Point	Whitmore Rapids	Vulcans Throne
Whitmore Point SE	Vulcans Throne SW	Vulcans Throne SE

WHITMORE RAPIDS, AZ
2011

ADJOINING 7.5' QUADRANGLES