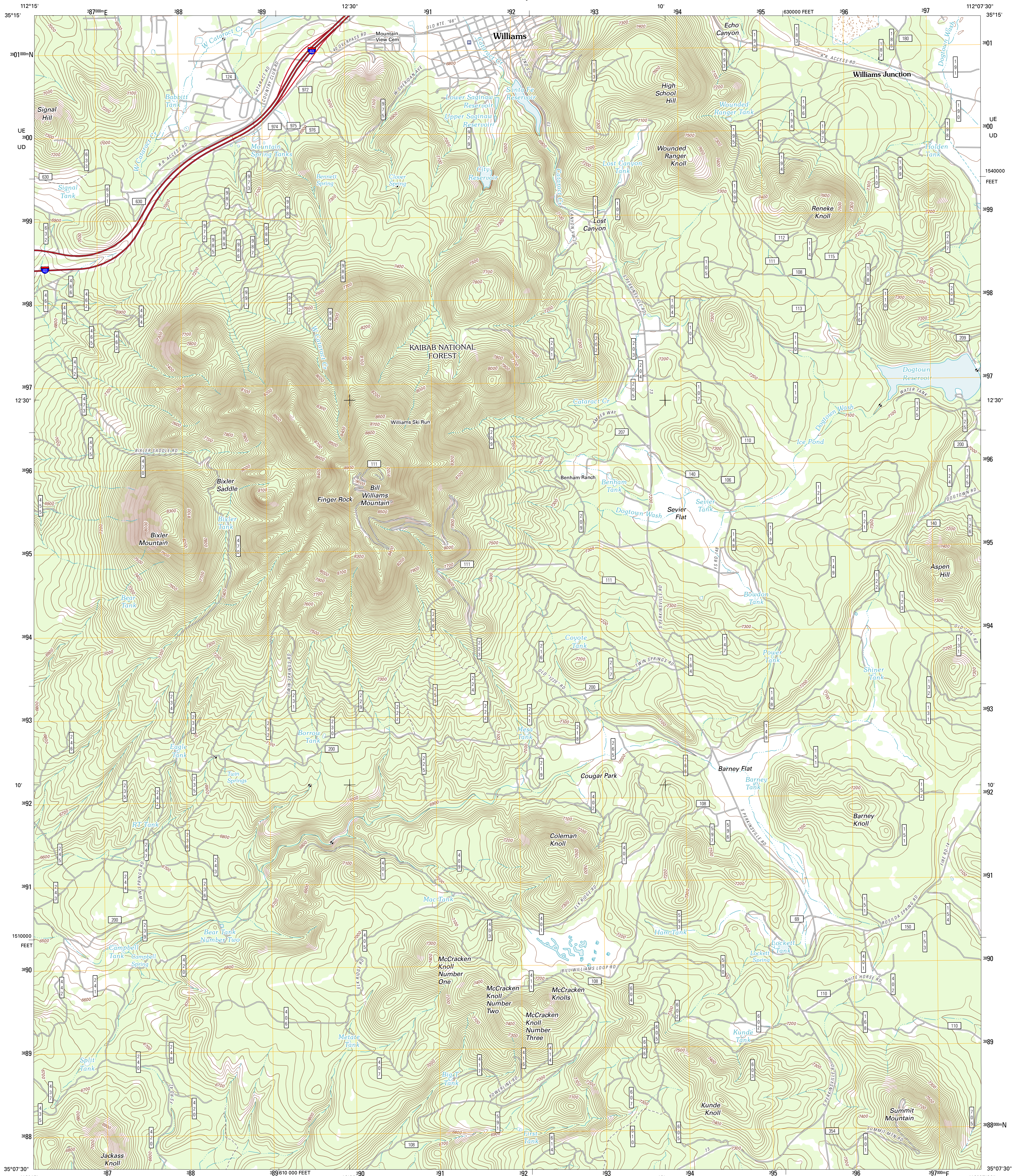




U.S. DEPARTMENT OF THE INTERIOR
U. S. GEOLOGICAL SURVEY

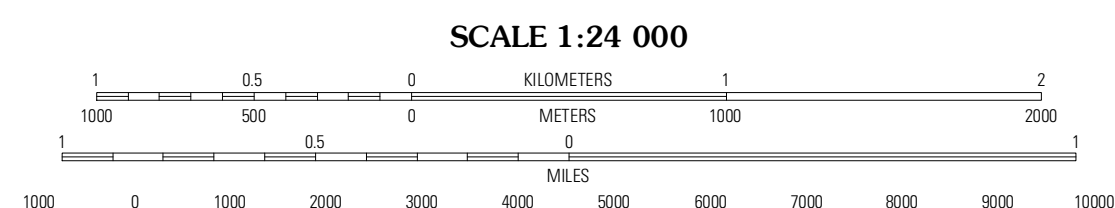
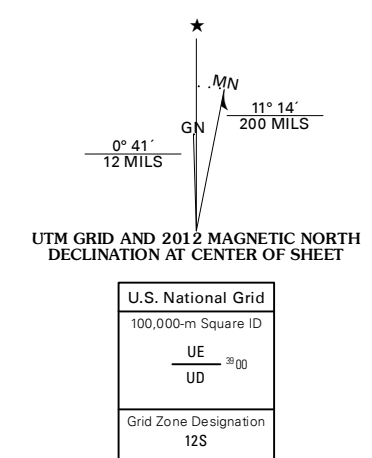


WILLIAMS SOUTH QUADRANGLE
ARIZONA-COCONINO CO.
7.5-MINUTE SERIES



Produced by the United States Geological Survey
North American Datum of 1983 (NAD83)
World Geodetic System of 1984 (WGS84). Projection and
1 000-foot grid: Universal Transverse Mercator, Zone 12S
10 000-foot ticks: Arizona Coordinate System of 1983
(central zone)

Imagery: N.A.I.P., June 2010
Roads: ©2006-2011 TomTom
Roads within US Forest Service Lands: FSTopo Data
with limited Forest Service updates, 2009
Names: GNS, 2011
Hydrography: National Hydrography Dataset, 2010
Contours: National Elevation Dataset, 2000
Boundaries: Census, IBWC, IBC, USGS, 1972 - 2010



CONTOUR INTERVAL 20 FEET
NORTH AMERICAN VERTICAL DATUM OF 1988

This map was produced to conform with the
National Geospatial Program US Topo Product Standard, 2011.
A metadata file associated with this product is draft version 0.6.1



Hearst Mountain	Williams North	Stigraevs Mountain
McLellan Reservoir	Williams South	Davenport Hill
Matterson	May Tank Picket	White Horse Lake

ROAD CLASSIFICATION

- Interstate Route
- US Route
- Ramp
- FS Interstate Route
- FS Primary Route
- FS Passenger Route
- FS High Clearance Route
- State Route
- Local Road
- 4WD
- Dashed Line

Check with local Forest Service unit for current travel conditions and restrictions.

WILLIAMS SOUTH, AZ
2012

ADJOINING 7.5' QUADRANGLES