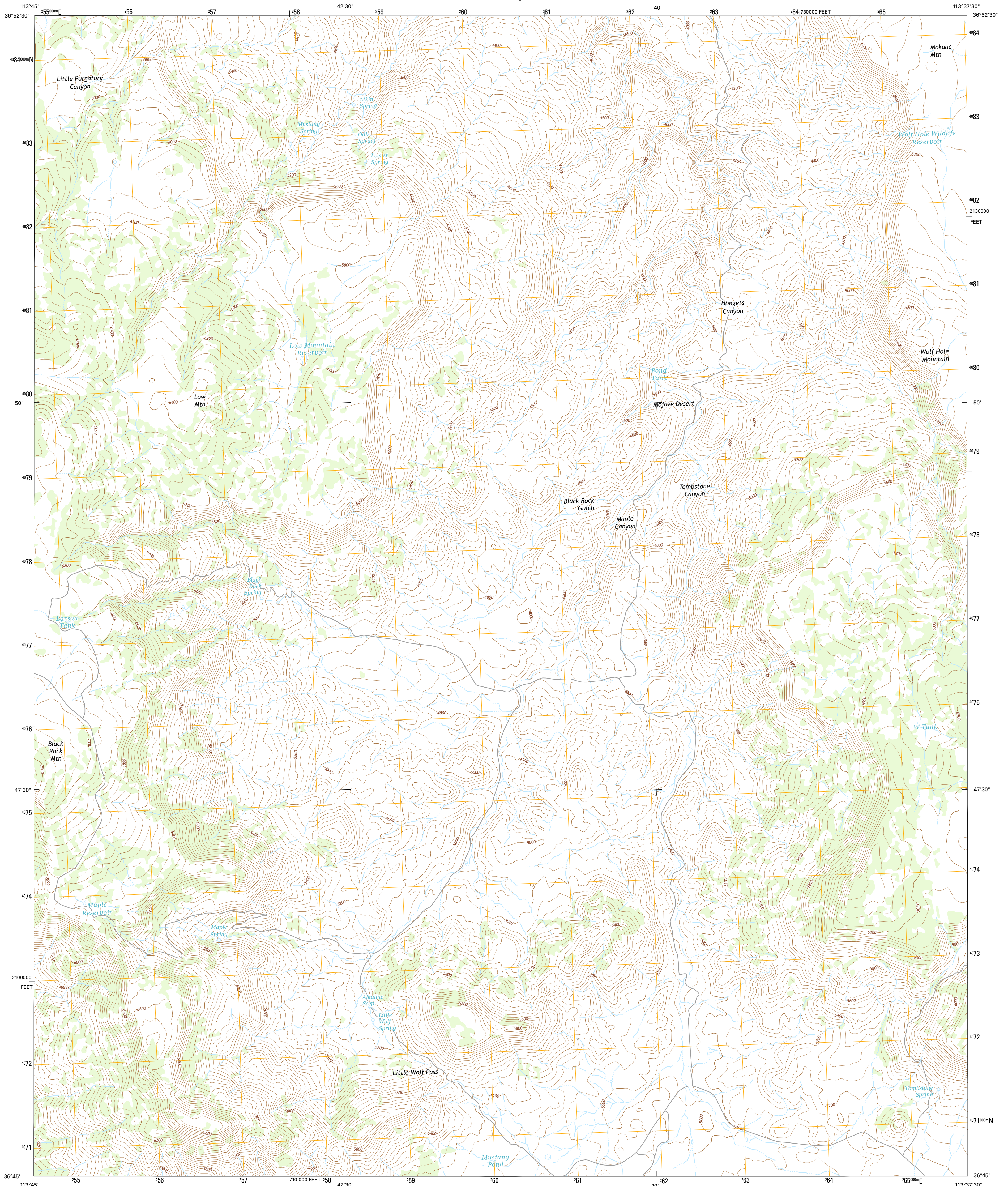




U.S. DEPARTMENT OF THE INTERIOR
U.S. GEOLOGICAL SURVEY



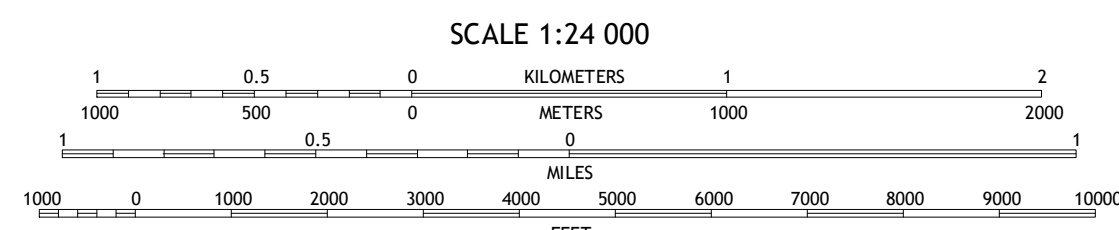
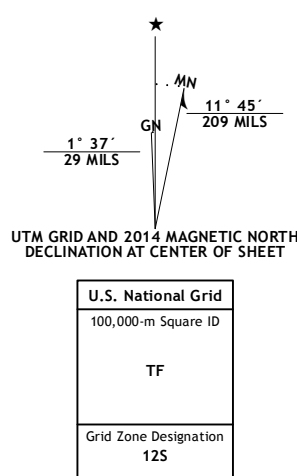
WOLF HOLE MOUNTAIN WEST QUADRANGLE
ARIZONA-MOHAVE CO.
7.5-MINUTE SERIES



Produced by the United States Geological Survey
North American Datum of 1983 (NAD83)
World Geodetic System of 1984 (WGS84). Projection and
1:000-meter grid: Universal Transverse Mercator, Zone 12S
10 000-foot ticks: Arizona Coordinate System of 1983 (west
zone)

This map is not a legal document. Boundaries may be
generalized for this map scale. Private lands within government
reservations may not be shown. Obtain permission before
entering private lands.

Imagery.....N.A.I.P., June 2013
Roads.....HERE, ©2013
Names.....GNIS, 2013
Hydrography.....National Hydrography Dataset, 2013
Contours.....National Elevation Dataset, 2000
Boundaries.....Multiple sources; see metadata file 1972_2014
Public Land Survey System.....BLM, 2011



CONTOUR INTERVAL 40 FEET
NORTH AMERICAN VERTICAL DATUM OF 1988

This map was produced to conform with the
National Geospatial Program US Topo Product Standard, 2011.
A metadata file associated with this product is draft version 0.6.16



QUADRANGLE LOCATION

ROAD CLASSIFICATION

Expressway ——— Local Connector
Secondary Hwy ——— Local Road
Ramp ——— 4WD
Interstate Route ——— US Route
State Route

1	2	3
4	5	6
7	8	

ADJOINING QUADRANGLES

- 1 Mountain Sheep Spring
- 2 Purgatory Canyon
- 3 Lizard Point
- 4 Mount Bangs
- 5 Wolf Hole Mountain East
- 6 Cane Springs
- 7 Mustang Knoll
- 8 Sullivan Draw North

WOLF HOLE MOUNTAIN WEST, AZ
2014



NSN 7540-01-300-3000
US GCS X 2 4 K 4 9 0 0