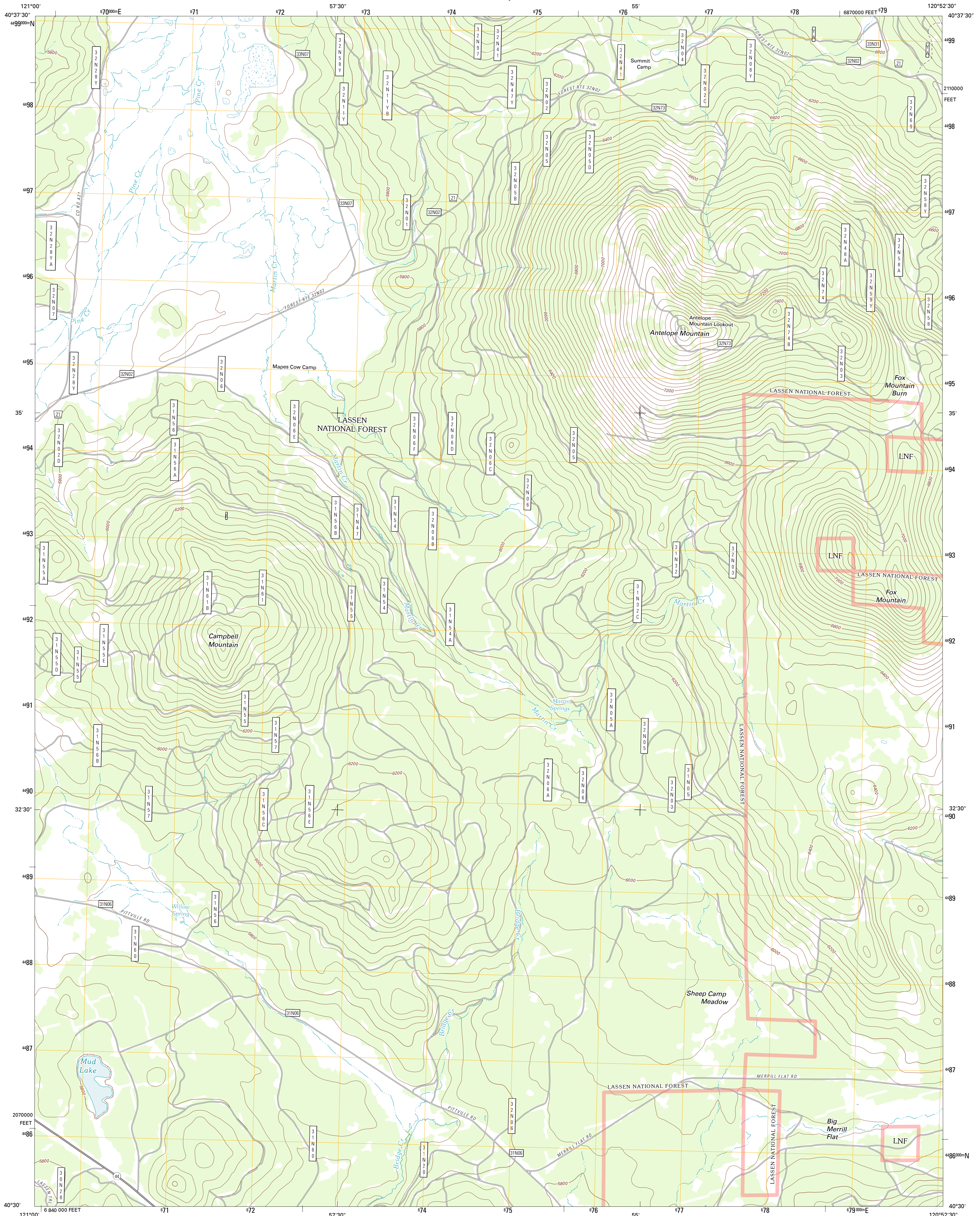




U.S. DEPARTMENT OF THE INTERIOR
U. S. GEOLOGICAL SURVEY

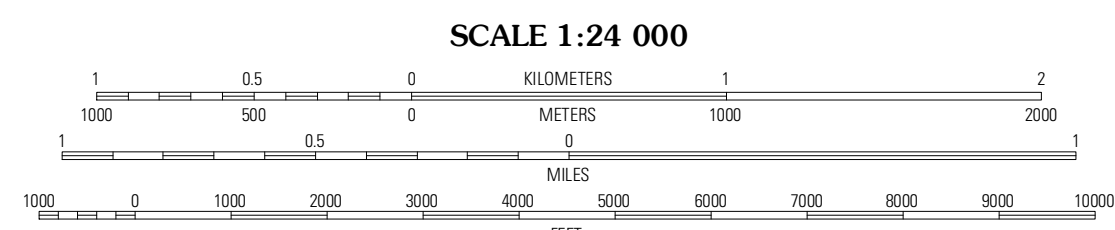
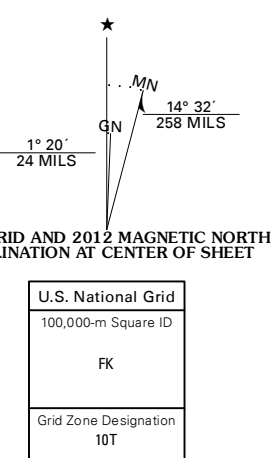


ANTELOPE MOUNTAIN QUADRANGLE
CALIFORNIA-LASSEN CO.
7.5-MINUTE SERIES

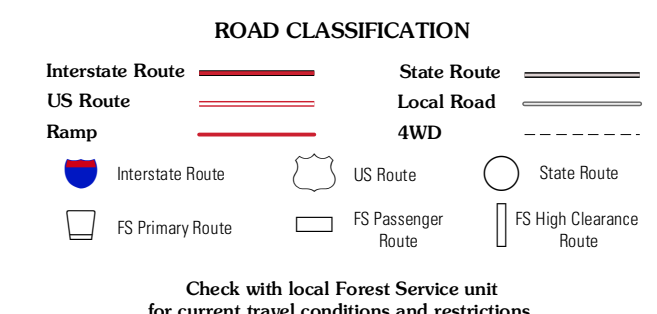
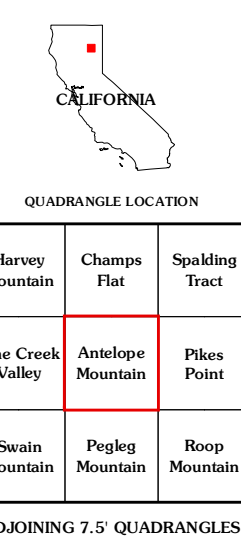


Produced by the United States Geological Survey
North American Datum of 1983 (NAD83)
World Geodetic System of 1984 (WGS84). Projection and
1 000-meter grid: Universal Transverse Mercator, Zone 10T
10 000-foot ticks: California Coordinate System of 1983
(zone 1)

Imagery.....NAIP, June 2010 - July 2010
Roads.....©2006-2011 TomTom
Roads within US Forest Service Lands.....FS Topo Data
with limited Forest Service updates, 2009
Names.....GNIS, 2011
Hydrography.....National Hydrography Dataset, 2010
Contours.....National Elevation Dataset, 1999
Boundaries.....Census, IBWC, IBC, USGS, 1972 - 2010



CONTOUR INTERVAL 40 FEET
NORTH AMERICAN VERTICAL DATUM OF 1988
This map was produced to conform with the
National Geospatial Program US Topo Product Standard, 2011.
A metadata file associated with this product is draft version 0.6.1



Check with local Forest Service unit
for current travel conditions and restrictions.

ANTELOPE MOUNTAIN, CA
2012

QUADRANGLE LOCATION

Harvey Mountain	Champs Flat	Spalding Tract
Pine Creek Valley	Antelope Mountain	Pikes Point
Swain Mountain	Pegleg Mountain	Roop Mountain

ADJOINING 7.5 QUADRANGLES