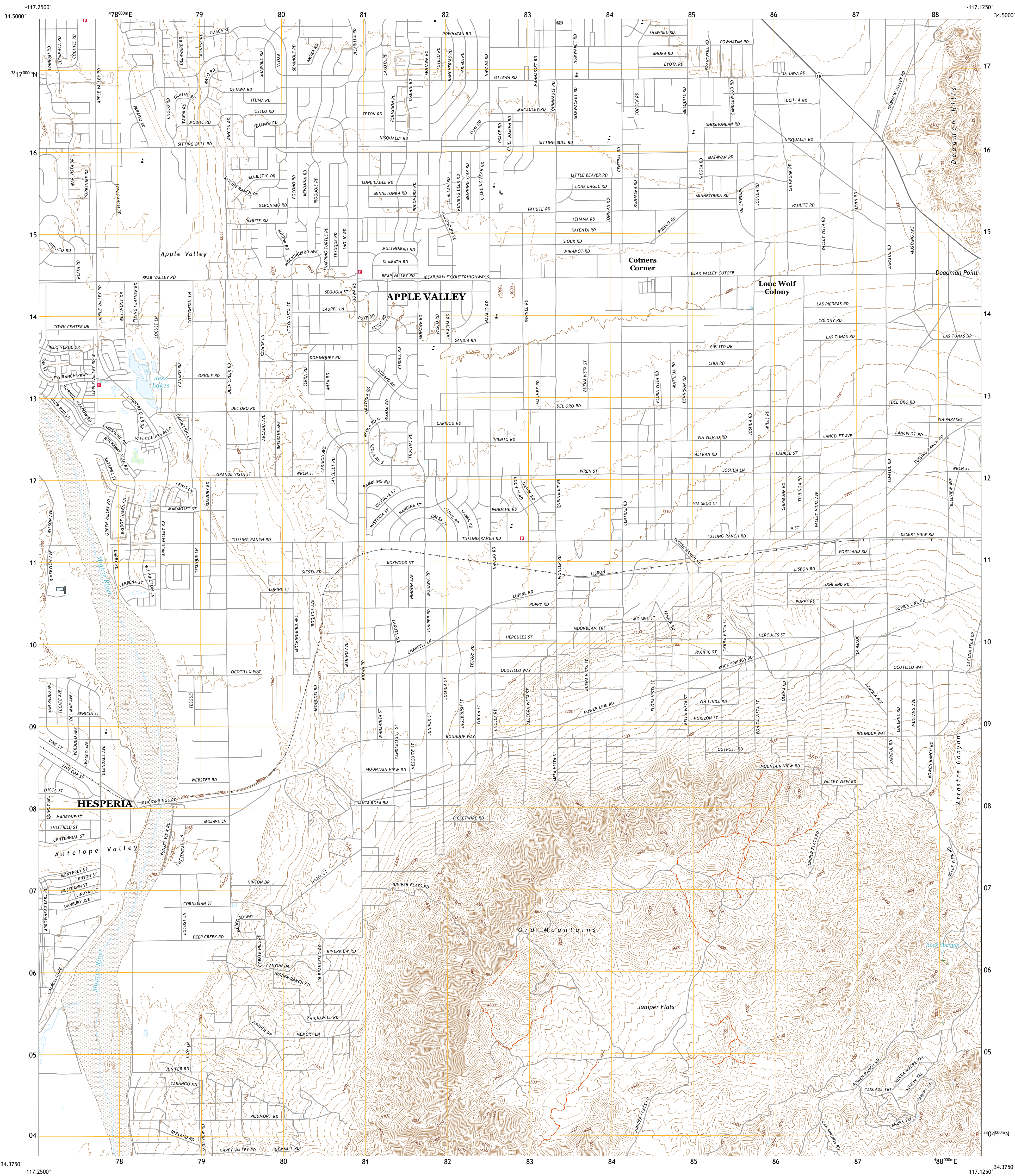




U.S. DEPARTMENT OF THE INTERIOR
U.S. GEOLOGICAL SURVEY



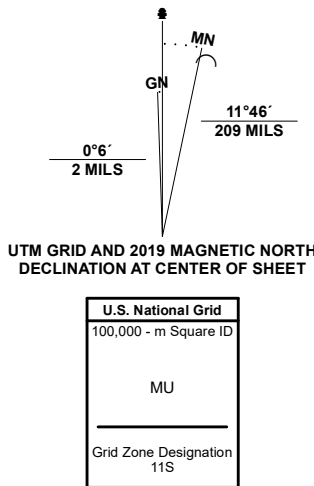
APPLE VALLEY SOUTH QUADRANGLE
CALIFORNIA - SAN BERNARDINO COUNTY
7.5-MINUTE SERIES



Produced by the United States Geological Survey

North American Datum of 1983 (NAD83)
World Geodetic System of 1984 (WGS84). Projection and
1 000-meter grid/Universal Transverse Mercator, Zone 11S
This map is not a legal document. Boundaries may be
generalized for this map scale. Private lands within government
reservations may not be shown. Obtain permission before
entering private lands.

Imagery.....NAIP, April 2020 - May 2020
Roads.....U.S. Census Bureau, 2016
Names.....GNV, 1981
Hydrography.....National Hydrography Dataset, 2001 - 2020
Contours.....National Elevation Dataset, 2018
Boundaries.....Multiple sources: see metadata file 2019 - 2021
Public Land Survey System.....BLM, 2020
Wetlands.....FWS National Wetlands Inventory 1994 - 1996



CONTOUR INTERVAL 20 FEET
NORTH AMERICAN VERTICAL DATUM OF 1988
This map was produced to conform with the
National Geospatial Program US Topo Product Standard.



1	2	3
4	5	6
7	8	9

- 1 Victorville
- 2 Apple Valley North
- 3 Fairview Valley
- 4 Hesperia
- 5 Fifteenmile Valley
- 6 Silverwood Lake
- 7 Lake Arrowhead
- 8 Butler Peak

ROAD CLASSIFICATION		
Expressway	Local Connector	
Secondary Hwy	Local Road	
Ramp	4WD	
Interstate Route	US Route	State Route

APPLE VALLEY SOUTH, CA

2021

