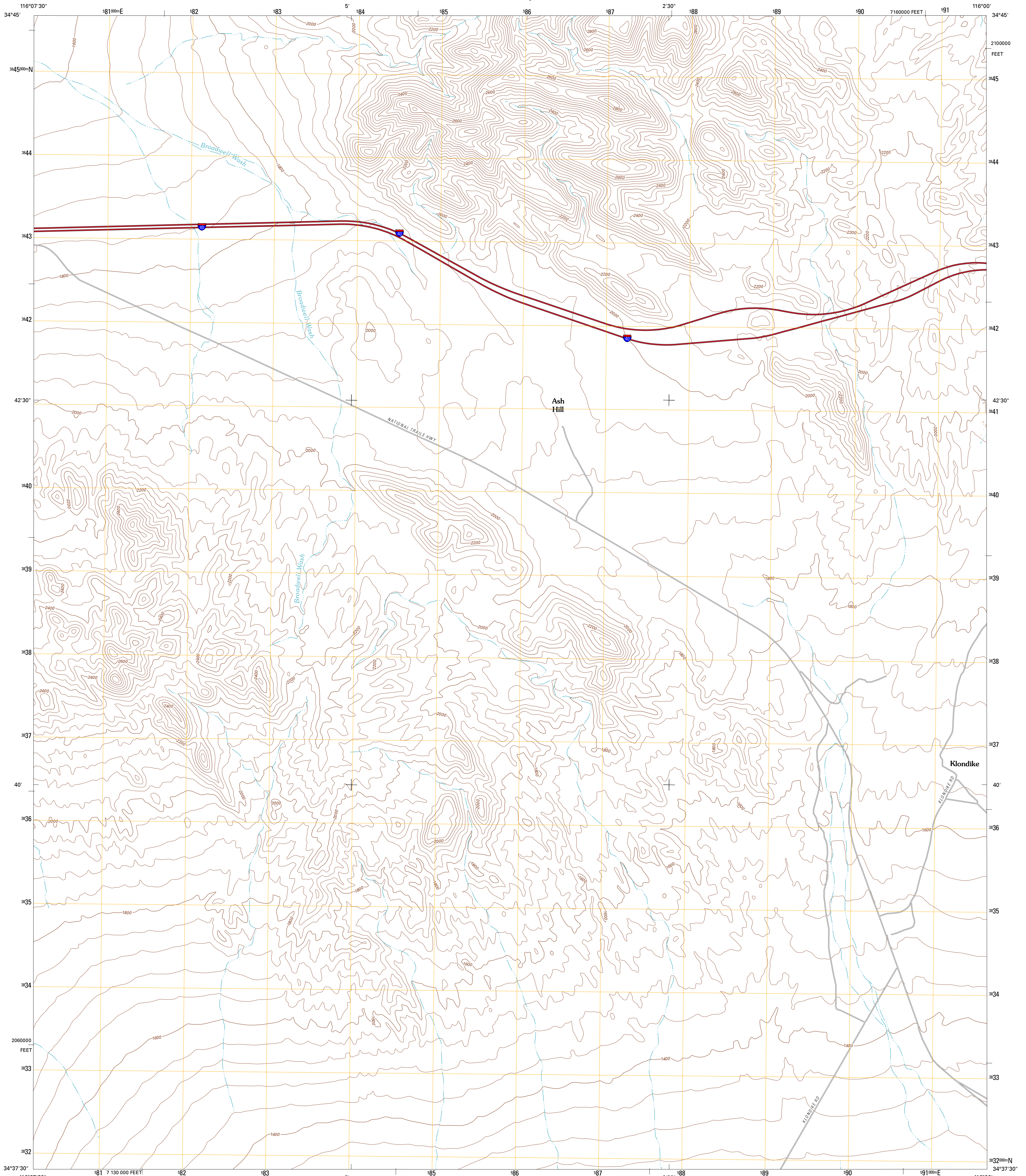




U.S. DEPARTMENT OF THE INTERIOR  
U. S. GEOLOGICAL SURVEY

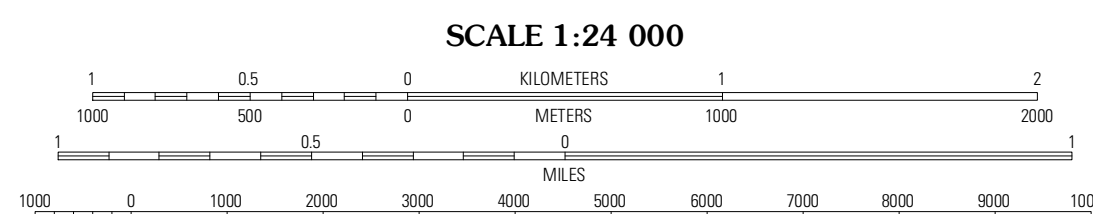
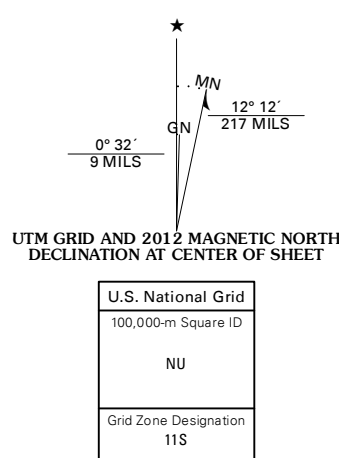


ASH HILL QUADRANGLE  
CALIFORNIA-SAN BERNARDINO CO.  
7.5-MINUTE SERIES



Produced by the United States Geological Survey  
North American Datum of 1983 (NAD83)  
World Geodetic System of 1984 (WGS84). Projection and  
1 000-foot grid: Universal Transverse Mercator, Zone 11S  
10 000-foot ticks: California Coordinate System of 1983  
(zone 5)

Imagery: NIP, May 2010  
Roads: 2006-2011 TomTom  
Names: GNIS, 2011  
Hydrography: National Hydrography Dataset, 2011  
Contours: National Elevation Dataset, 2006  
Boundaries: Census, IBWC, IBC, USGS, 1972 - 2010



CONTOUR INTERVAL 40 FEET  
NORTH AMERICAN VERTICAL DATUM OF 1988

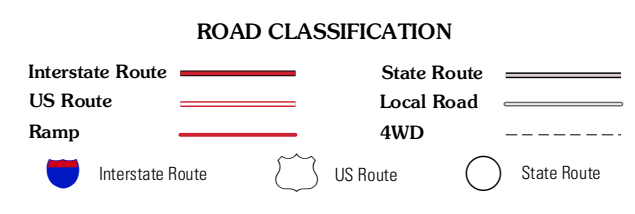
This map was produced to conform with the  
National Geospatial Program US Topo Product Standard, 2011.  
A metadata file associated with this product is draft version 0.6.1



QUADRANGLE LOCATION

Broadwell Lake	East of Broadwell Lake	West of Badwater Wash
Ludlow	Ash Hill	Siberia
Morgans Well	Ludlow SE	Bagdad SW

ADJOINING 7.5 QUADRANGLES



ASH HILL, CA  
2012