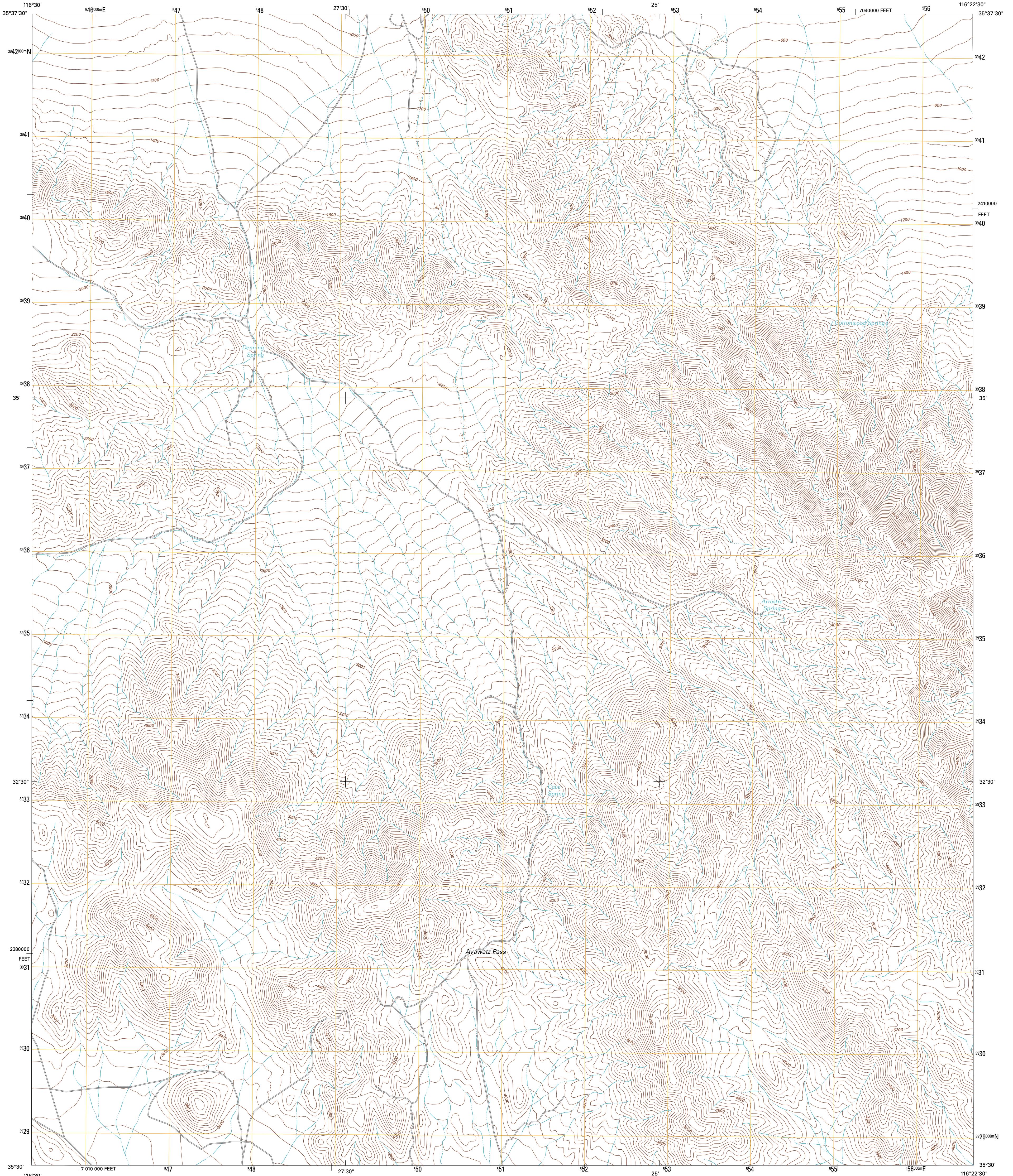




U.S. DEPARTMENT OF THE INTERIOR
U. S. GEOLOGICAL SURVEY

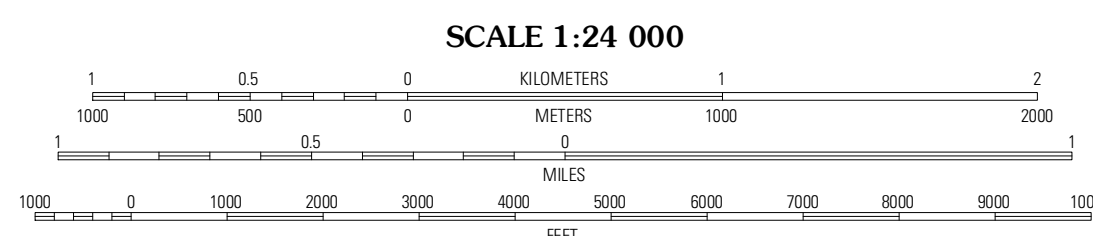
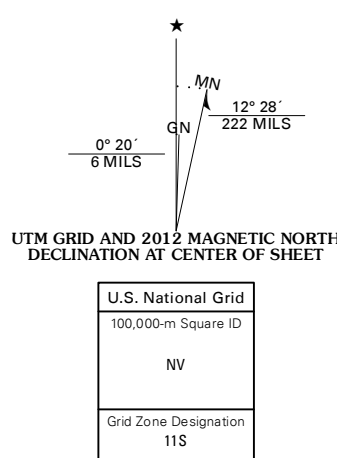


AWAWATZ PASS QUADRANGLE
CALIFORNIA-SAN BERNARDINO CO.
7.5-MINUTE SERIES



Produced by the United States Geological Survey
North American Datum of 1983 (NAD83)
World Geodetic System of 1984 (WGS84). Projection and
1 000-meter grid: Universal Transverse Mercator, Zone 11S
10 000-foot ticks: California Coordinate System of 1983
(zone 5)

Imagery: N.A.I.P., June 2010
Roads: ©2006-2011 TomTom
Names: G.N.I.S., 2011
Hydrography: National Hydrography Dataset, 2010
Contours: National Elevation Dataset, 2005
Boundaries: Census, IBWC, IBC, USGS, 1972 - 2010

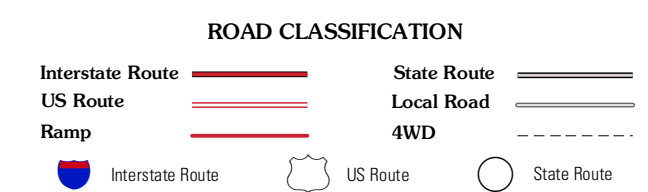


SCALE 1:24 000
CONTOUR INTERVAL 40 FEET
NORTH AMERICAN VERTICAL DATUM OF 1988
This map was produced to conform with the
National Geospatial Program US Topo Product Standard, 2011.
A metadata file associated with this product is draft version 0.6.1



QUADRANGLE LOCATION

East of Owl Lake	Old Box Pass	Saddle Peak Hills
East of Lunch Lake	Awawatz Pass	Sheep Creek Spring
Drinkwater Lake	Red Pass Lake NW	Red Pass Lake NE



AWAWATZ PASS, CA
2012

ADJOINING 7.5' QUADRANGLES