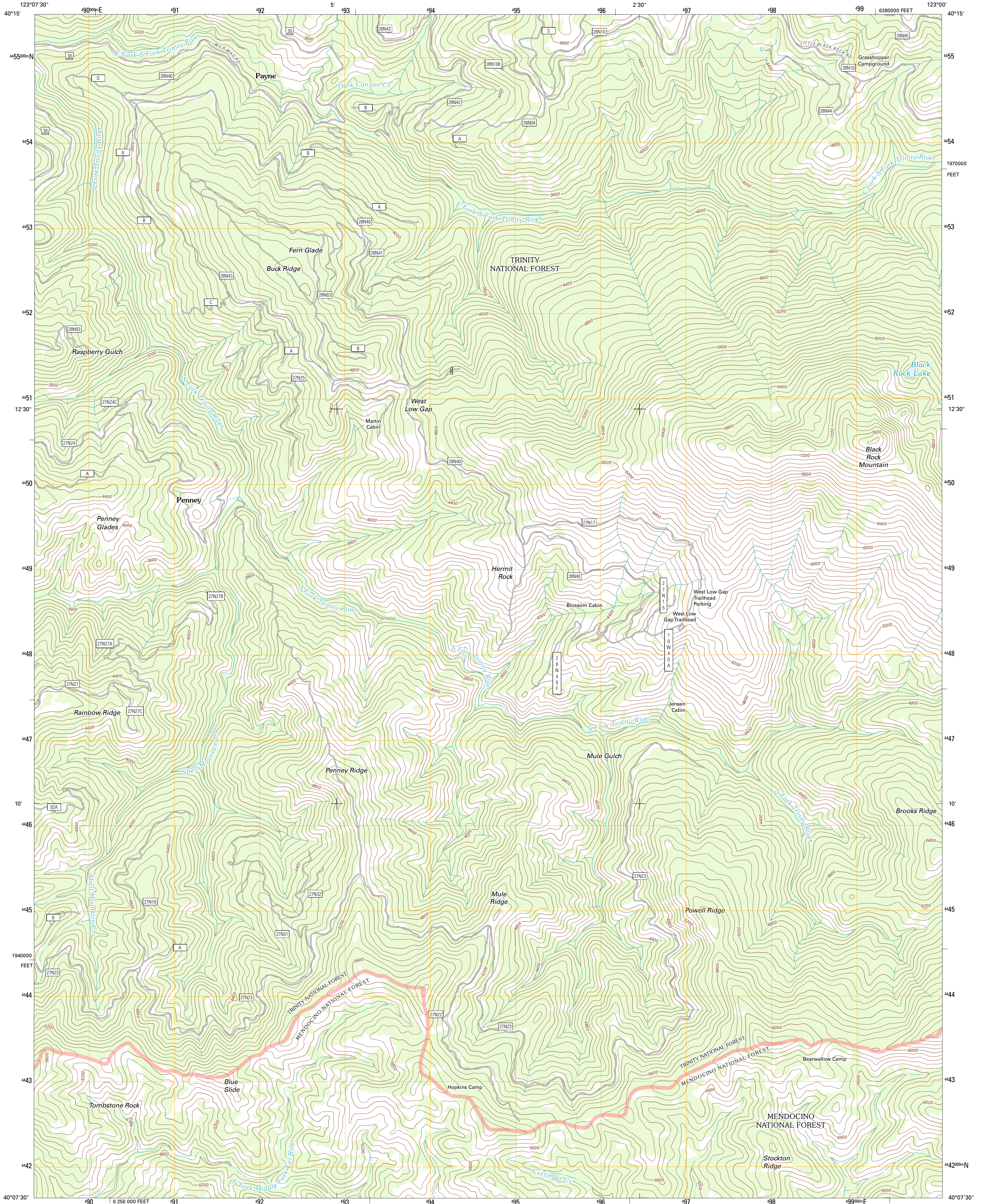




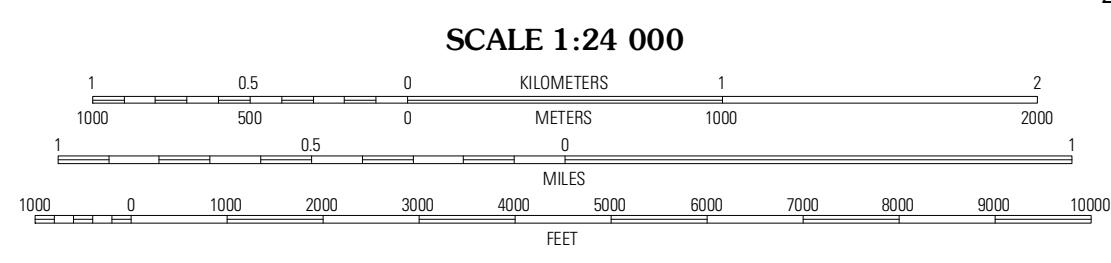
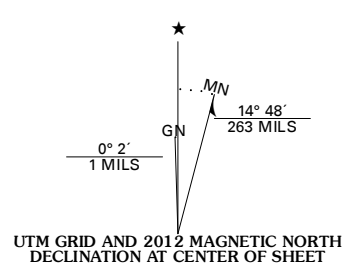
U.S. DEPARTMENT OF THE INTERIOR  
U. S. GEOLOGICAL SURVEY



BLACK ROCK MOUNTAIN QUADRANGLE  
CALIFORNIA-TRINITY CO.  
7.5-MINUTE SERIES



Produced by the United States Geological Survey  
North American Datum of 1983 (NAD83)  
World Geodetic System of 1984 (WGS84). Projection and  
1 000-meter grid: Universal Transverse Mercator, Zone 10T  
10 000-foot ticks: California Coordinate System of 1983  
(zone 1)



QUADRANGLE LOCATION

Smoky Creek	Pony Rock Peak	Plattina
Swim Ridge	Black Rock Mountain	North Yolla Boly Mountains
Four Corners Rock	Wrights Ridge	Solomon Peak

**ROAD CLASSIFICATION**

Interstate Route (thick red line)  
US Route (red line)  
Ramp (red line with blue triangle)

State Route (thin red line)  
Local Road (black line)  
4WD (dashed black line)

FS Primary Route (blue line with square)  
US Route (red line with circle)  
FS Passenger Route (black line with square)  
FS High Clearance Route (black line with circle)

Check with local Forest Service unit for current travel conditions and restrictions.

Imagery:.....NAP, July 2010  
Roads:.....©2006-2011 TomTom  
Roads within US Forest Service Lands  
with limited Forest Service updates, 2009  
Names:.....GNIS, 2011  
Hydrography:.....National Hydrography Dataset, 2010  
Contours:.....National Elevation Dataset, 2000  
Boundaries:.....Census, IBWC, IBC, USGS, 1972-2010

CONTOUR INTERVAL 80 FEET  
NORTH AMERICAN VERTICAL DATUM OF 1988

This map was produced to conform with the  
National Geospatial Program US Topo Product Standard, 2011.  
A metadata file associated with this product is draft version 0.6.1

BLACK ROCK MOUNTAIN, CA  
2012

ADJOINING 7.5' QUADRANGLES