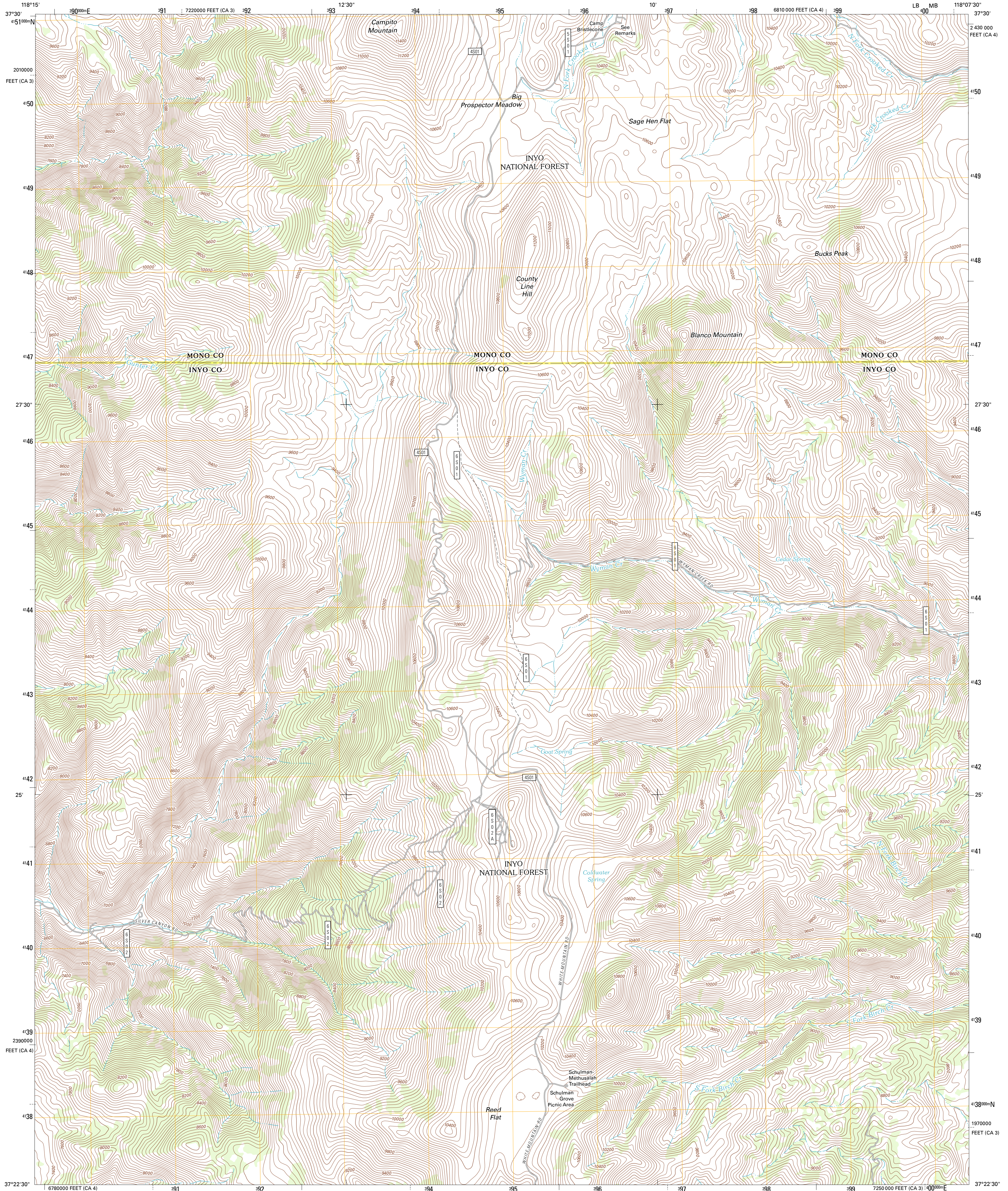




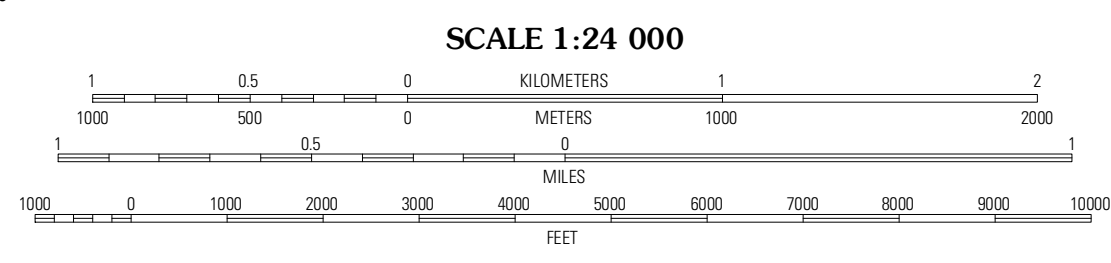
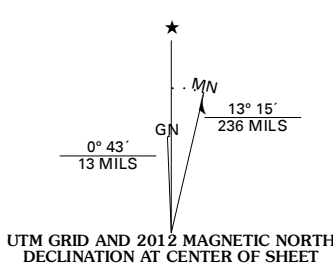
U.S. DEPARTMENT OF THE INTERIOR  
U. S. GEOLOGICAL SURVEY



BLANCO MOUNTAIN QUADRANGLE  
CALIFORNIA  
7.5-MINUTE SERIES



Produced by the United States Geological Survey  
North American Datum of 1983 (NAD83)  
World Geodetic System of 1984 (WGS84). Projection and  
1 000-meter grid: Universal Transverse Mercator, Zone 11S  
10 000-foot ticks: California Coordinate System of 1983  
(zones 4 and 3)



QUADRANGLE LOCATION

Chalfant Valley	Mount Barcroft	Station Peak
Laws	Blanco Mountain	Crooked Creek
Poleta Canyon	Westgard Pass	Deep Springs Lake

ROAD CLASSIFICATION

Interstate Route	State Route
US Route	Local Road
Ramp	4WD
FS Primary Route	FS Passenger Route
FS High Clearance Route	

Check with local Forest Service unit for current travel conditions and restrictions.

BLANCO MOUNTAIN, CA  
2012

Imagery: NADIP, June 2010 - August 2010  
Roads: 2006-2011 TomTom  
Roads within US Forest Service Lands: FSTopo, Data with limited Forest Service updates, 2009  
Names: GNIS, 2011  
Hydrography: National Hydrography Dataset, 2010  
Contours: National Elevation Dataset, 2001  
Boundaries: Census, BWC, IBC, USGS, 1972 - 2010

U.S. National Grid

100,000m Square ID	10
UTM	LB MB
Grid Zone Designation	11S

CONTOUR INTERVAL 40 FEET  
NORTH AMERICAN VERTICAL DATUM OF 1988

This map was produced to conform with the National Geospatial Program US Topo Product Standard, 2011. A metadata file associated with this product is draft version 0.6.1

ADJOINING 7.5 QUADRANGLES