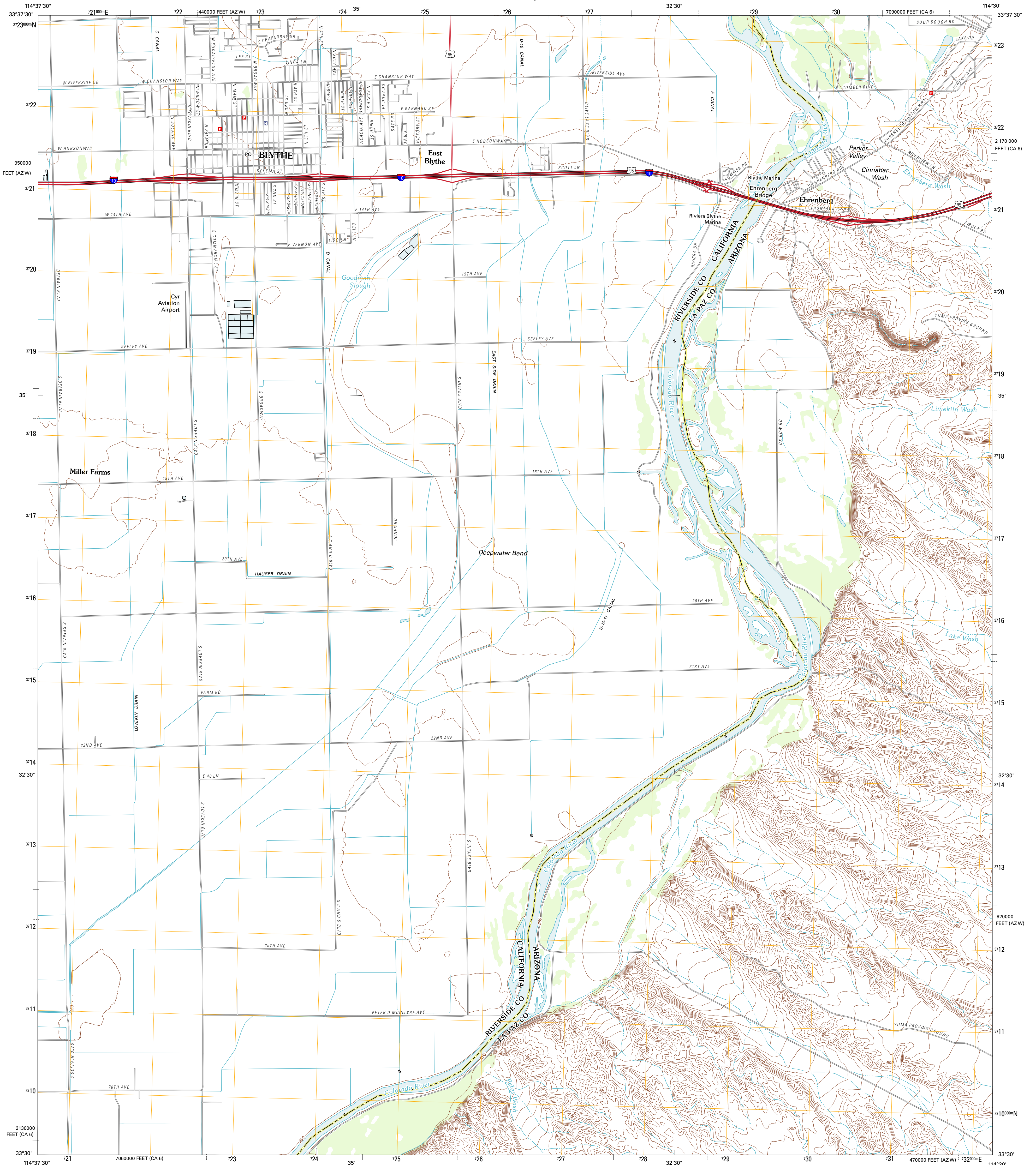




U.S. DEPARTMENT OF THE INTERIOR  
U. S. GEOLOGICAL SURVEY

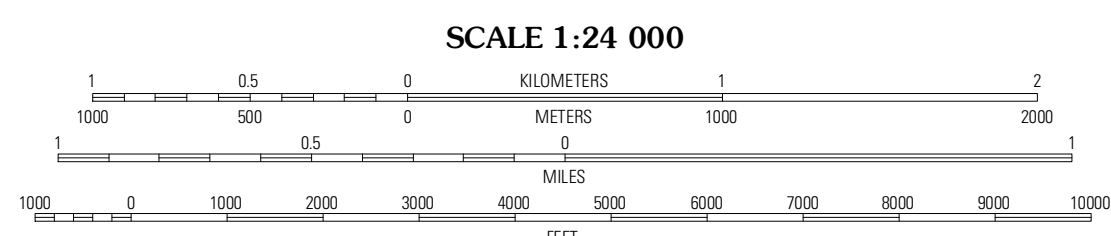
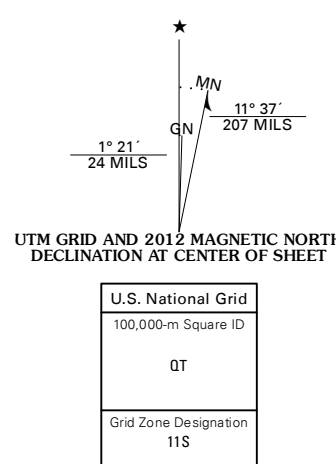


BLYTE QUADRANGLE  
CALIFORNIA-ARIZONA  
7.5-MINUTE SERIES



Produced by the United States Geological Survey  
North American Datum of 1983 (NAD83)  
World Geospatial System of 1984 (WGS84). Projection and  
1 000-foot grid: Universal Transverse Mercator, Zone 11S  
10 000-foot ticks: California Coordinate System of 1983  
(zone 6), Arizona Coordinate System of 1983 (west zone)

Imagery: N/AIP, April 2010  
Roads: ©2006-2011 TomTom  
Names: GNS, 2011  
Hydrography: National Hydrography Dataset, 2010  
Contours: National Elevation Dataset, 2002  
Boundaries: Census, BWC, IBC, USGS, 1972 - 2010



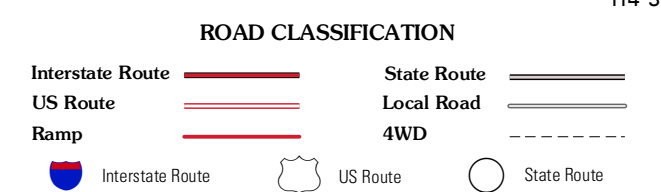
SCALE 1:24 000  
CONTOUR INTERVAL 10 FEET  
NORTH AMERICAN VERTICAL DATUM OF 1988  
This map was produced to conform with the  
National Geospatial Program US Topo Product Standard, 2011.  
A metadata file associated with this product is draft version 0.6.1



QUADRANGLE LOCATION

McCoy Wash	Blythe NE	La Paz Mountain
Ripley	Blythe	Dome Rock Mountains SW
Palo Verde	Mule Wash	North Trip Peaks

ADJOINING 7.5 QUADRANGLES



BLYTE, CA-AZ  
2012