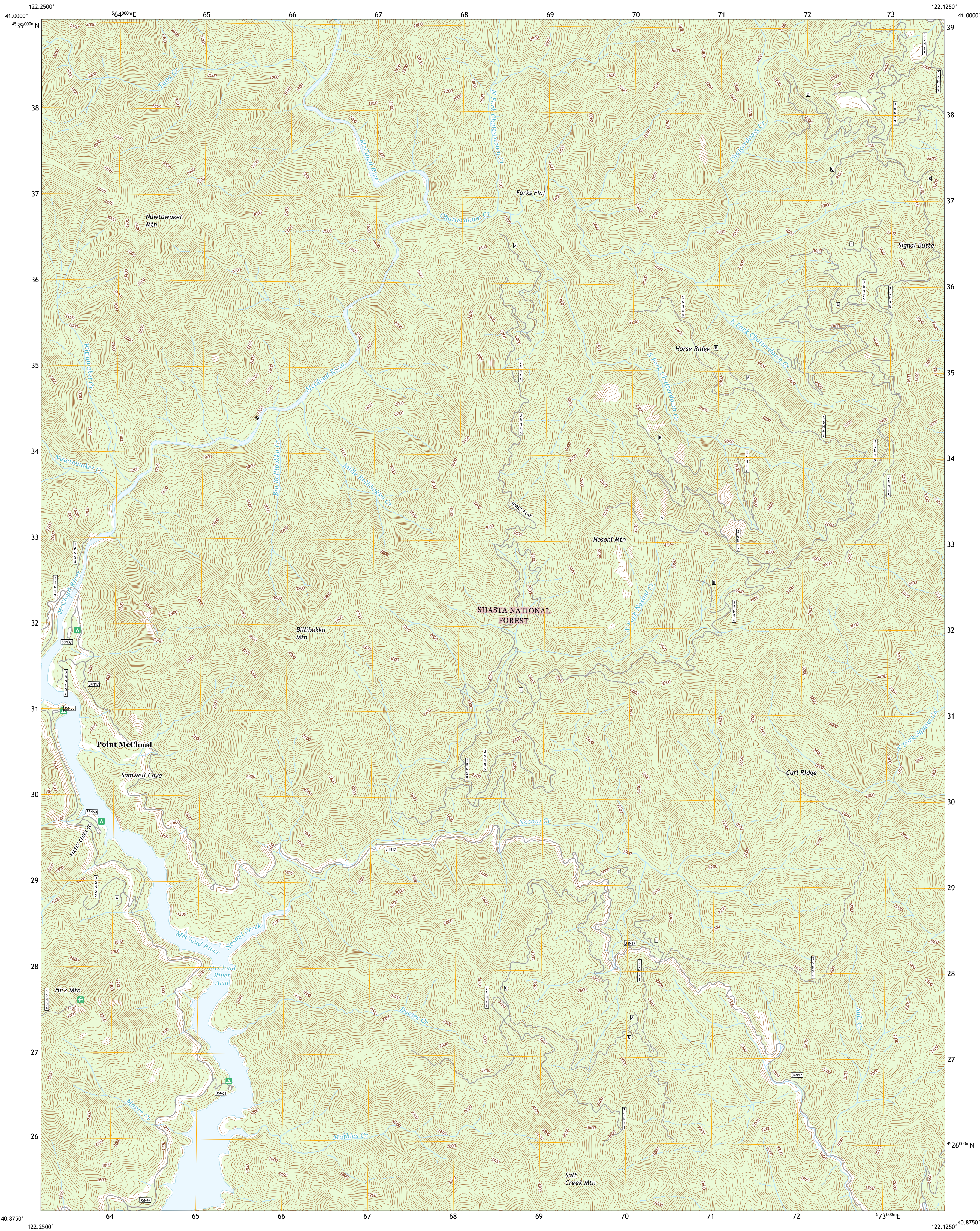




U.S. DEPARTMENT OF THE INTERIOR  
U.S. GEOLOGICAL SURVEY

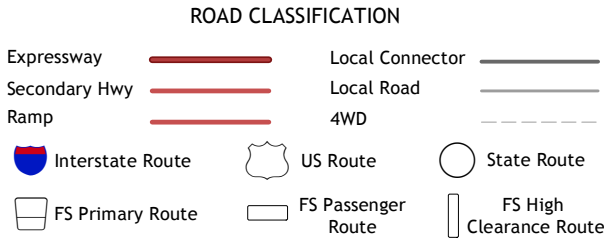
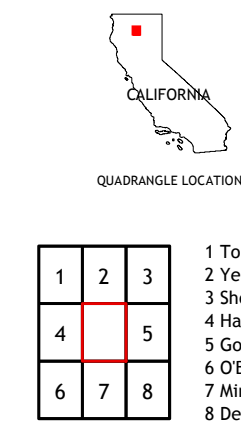
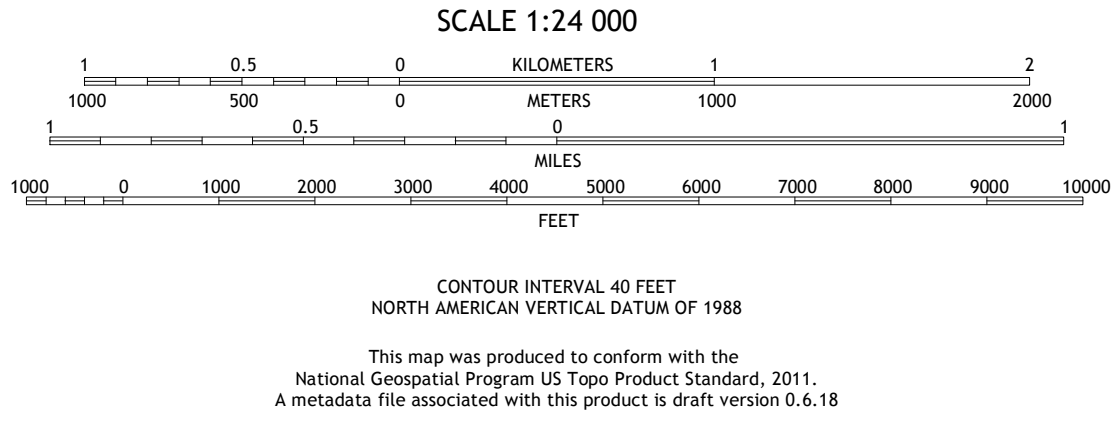
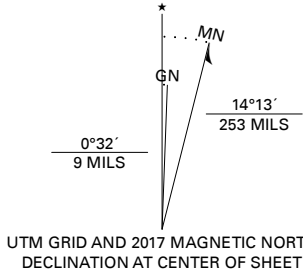


BOLLIBOKKA MOUNTAIN QUADRANGLE  
CALIFORNIA - SHASTA COUNTY  
7.5-MINUTE SERIES



**Produced by the United States Geological Survey**  
North American Datum of 1983 (NAD83)  
World Geodetic System of 1984 (WGS84). Projection and  
1 000-meter grid: Universal Transverse Mercator, Zone 10T  
This map is not a legal document. Boundaries may be  
generalized for this map scale. Private lands within government  
reservations may not be shown. Obtain permission before  
entering private lands.

Imagery.....N.A.P., July 2016 - October 2016  
Roads.....U.S. Census Bureau, 2018  
Roads within US Forest Service Lands.....FS Topo Data, 2018  
Names.....with limited Forest Service updates, 2018  
Hydrography.....National Hydrography Dataset, 2003  
Contours.....National Elevation Dataset, 2001  
Boundaries.....Multiple sources: see metadata file, 2016  
Public Land Survey System.....BLM, 2018  
Wetlands.....FWS National Wetlands Inventory, 1972 - 1983



Check with local Forest Service unit  
for current travel conditions and restrictions.

**BOLLIBOKKA MOUNTAIN, CA**  
**2018**

