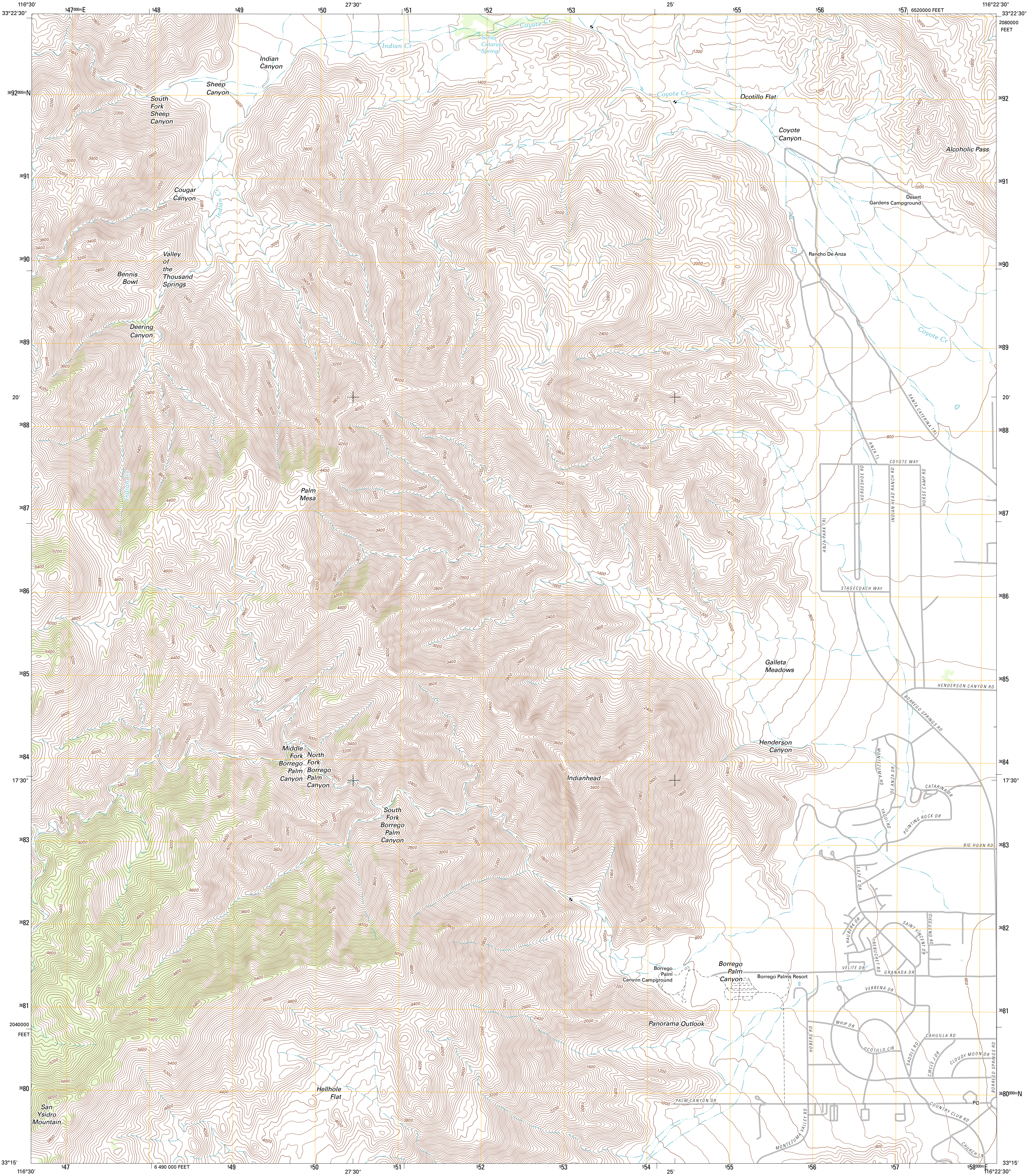




U.S. DEPARTMENT OF THE INTERIOR  
U. S. GEOLOGICAL SURVEY

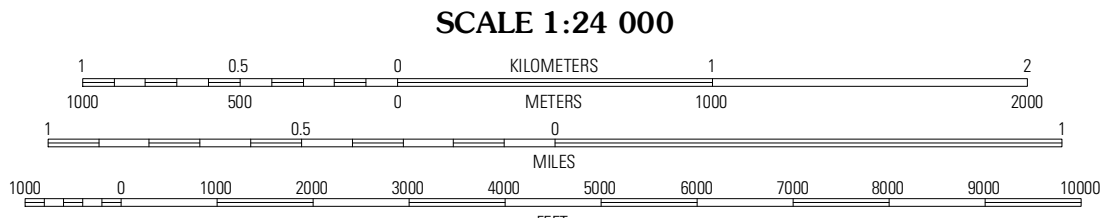
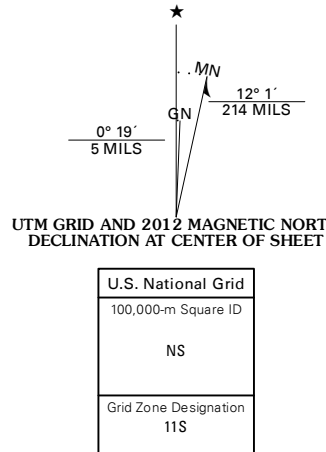


BORREGO PALM CANYON QUADRANGLE  
CALIFORNIA-SAN DIEGO CO.  
7.5-MINUTE SERIES



Produced by the United States Geological Survey  
North American Datum of 1983 (NAD83)  
World Geodetic System of 1984 (WGS84). Projection and  
1000-meter grid: Universal Transverse Mercator, Zone 11S  
10 000-foot ticks: California Coordinate System of 1983  
(zone 6)

Imagery.....NIP, May 2010  
Roads.....2006-2011 TomTom  
Names.....GNIS, 2011  
Hydrography.....National Hydrography Dataset, 2010  
Contours.....National Elevation Dataset, 2006  
Boundaries.....Census, IBWC, IBC, USGS, 1972 - 2010



CONTOUR INTERVAL 40 FEET  
NORTH AMERICAN VERTICAL DATUM OF 1988  
This map was produced to conform with the  
National Geospatial Program US Topo Product Standard, 2011.  
A metadata file associated with this product is draft version 0.6.1



Buckhorn Mountain	Collins Valley	Clark Lake NE
Hot Springs Mountain	Borrego Palm Canyon	Clark Lake
Ranchita	Tubb Canyon	Borrego Sink

ADJOINING 7.5' QUADRANGLES

ROAD CLASSIFICATION			
Interstate Route	State Route	US Route	Local Road
Ramp	4WD		

BORREGO PALM CANYON, CA  
2012