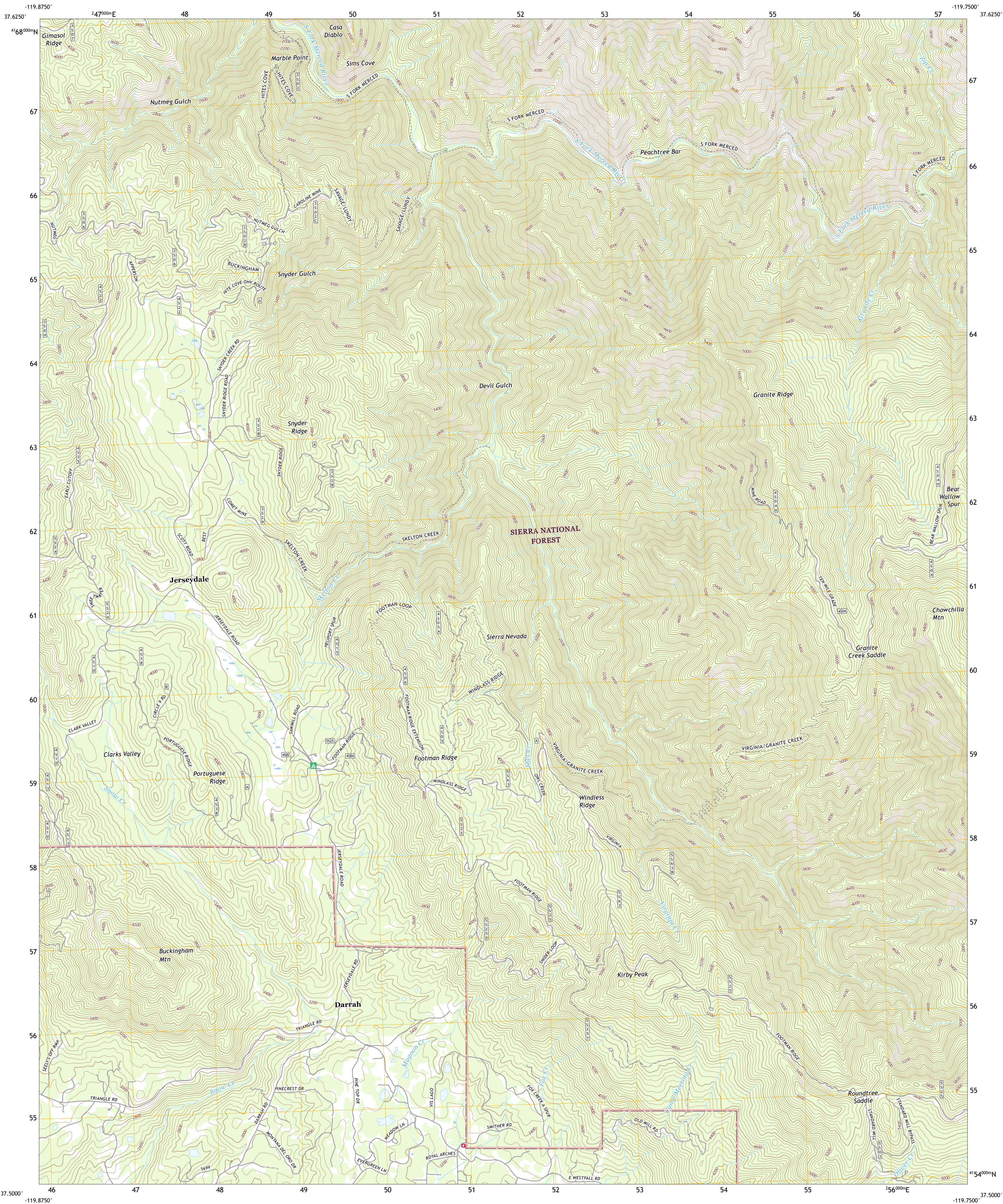




U.S. DEPARTMENT OF THE INTERIOR
U.S. GEOLOGICAL SURVEY

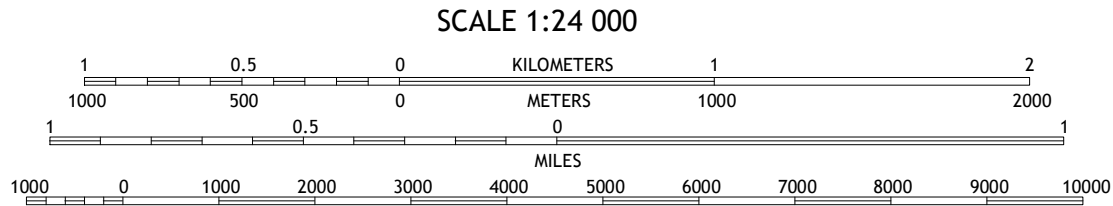
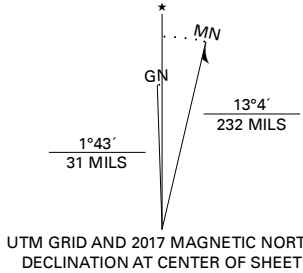


BUCKINGHAM MOUNTAIN QUADRANGLE
CALIFORNIA - MARIPOSA COUNTY
7.5-MINUTE SERIES



Produced by the United States Geological Survey
North American Datum of 1983 (NAD83)
World Geodetic System of 1984 (WGS84). Projection and
1 000-meter grid: Universal Transverse Mercator, Zone 11S
This map is not a legal document. Boundaries may be
generalized for this map scale. Private lands within government
reservations may not be shown. Obtain permission before
entering private lands.

Imagery.....NAIP, July 2016 - October 2016
Roads.....U.S. Census Bureau, 2016
Roads within US Forest Service Lands.....FS Topo
Data with limited Forest Service updates, 2018
Names.....GNS, 1981
Hydrography.....National Hydrography Dataset, 2002 - 2018
Contours.....National Elevation Dataset, 2001
Boundaries.....Multiple sources: file 2016, 2017
Public Land Survey System.....BLM, 2018
Wetlands.....FWS National Wetlands Inventory 1983 - 1984



1	2	3
4	5	6
7	8	9

1 Kinsley
2 El Portal
3 El Capitan
4 Feliciano Mountain
5 Wawona
6 Mariposa
7 Stumpfield Mountain
8 Fish Camp

ROAD CLASSIFICATION

Expressway
Secondary Hwy
Ramp
Interstate Route
US Route
FS Primary Route
Local Connector
Local Road
4WD
State Route
FS Passenger Route
FS High Clearance Route

Check with local Forest Service unit
for current travel conditions and restrictions.

BUCKINGHAM MOUNTAIN, CA
2018

