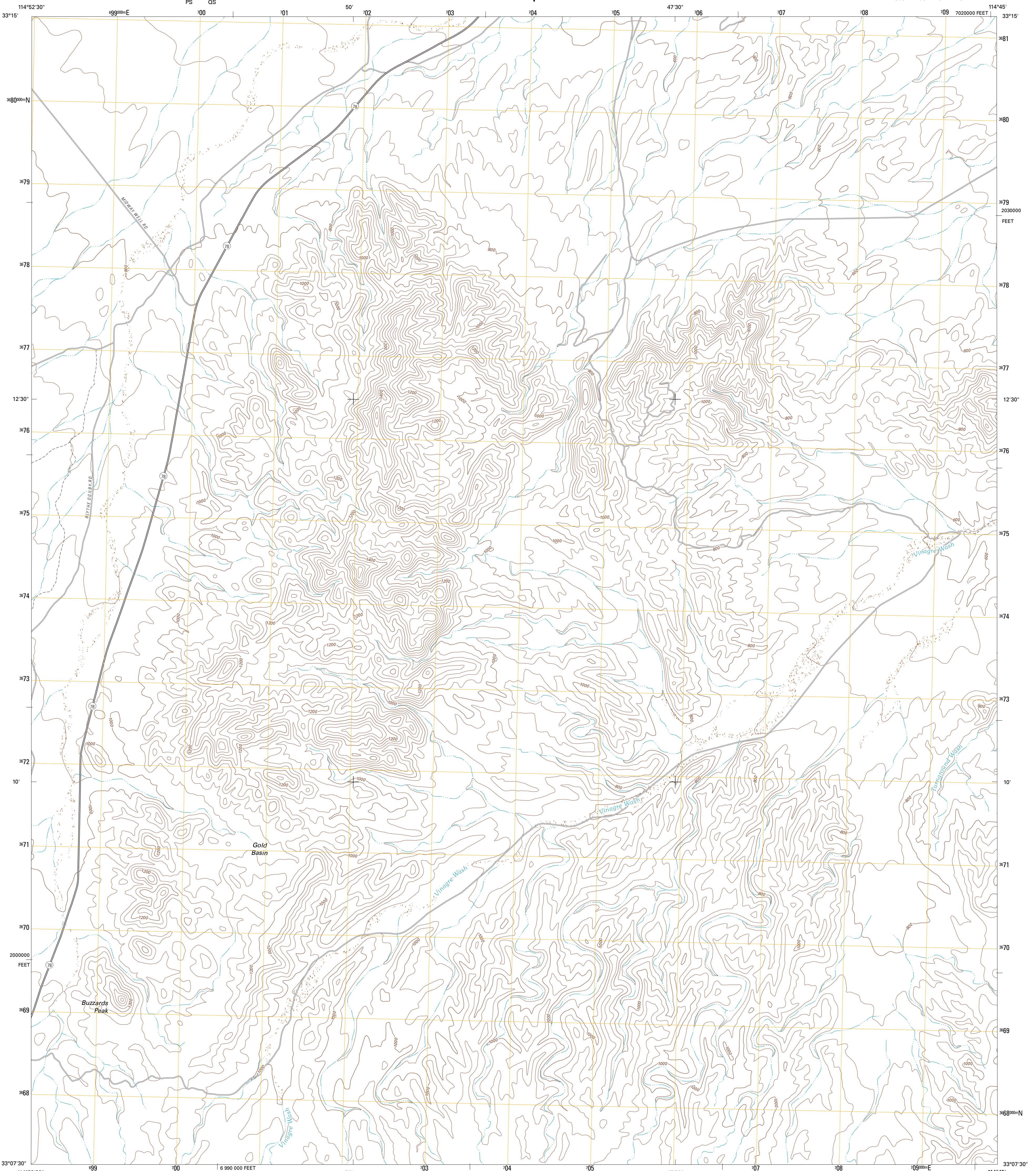




U.S. DEPARTMENT OF THE INTERIOR
U. S. GEOLOGICAL SURVEY

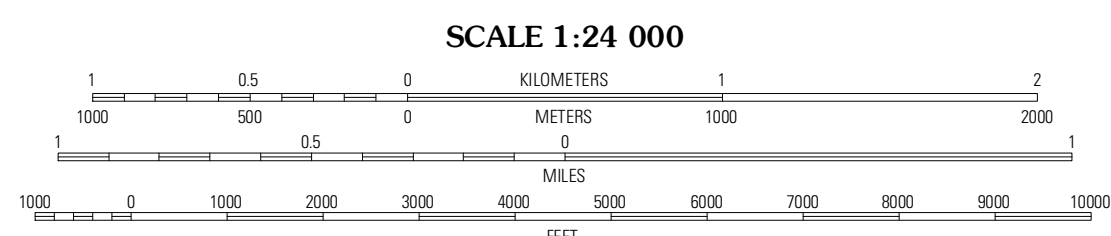
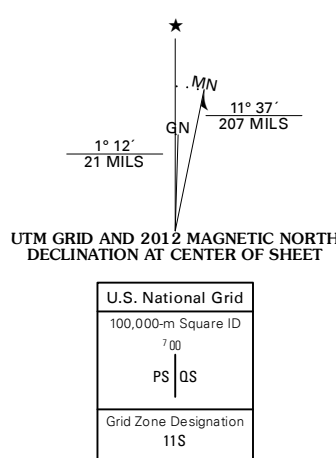


BUZZARDS PEAK QUADRANGLE
CALIFORNIA-IMPERIAL CO.
7.5-MINUTE SERIES



Produced by the United States Geological Survey
North American Datum of 1983 (NAD83)
World Geodetic System of 1984 (WGS84). Projection and
1 000-meter grid: Universal Transverse Mercator, Zone 11S
10 000-foot ticks: California Coordinate System of 1983
(zone 6)

Imagery:.....NAIP, April 2010
Roads:.....©2006-2011 TomTom
Names:.....GNS, 2011
Hydrography:.....National Hydrography Dataset, 2010
Contours:.....National Elevation Dataset, 2005
Boundaries:.....Census, IBWC, IBC, USGS, 1972 - 2010



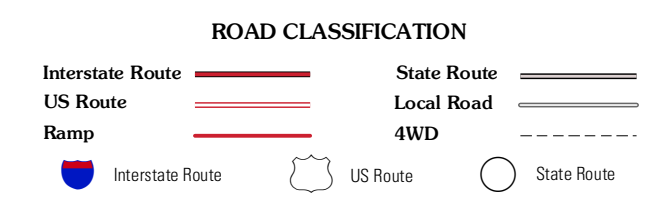
CONTOUR INTERVAL 40 FEET
NORTH AMERICAN VERTICAL DATUM OF 1988

This map was produced to conform with the
National Geospatial Program US Topo Product Standard, 2011.
A metadata file associated with this product is draft version 0.6.1



QUADRANGLE LOCATION

West of Palo Verde Peak	Palo Verde Peak	Cibola
Mount Barrow	Buzzards Peak	Picacho NW
Ninemile Wash	Quartz Peak	Picacho SW



BUZZARDS PEAK, CA
2012

ADJOINING 7.5' QUADRANGLES