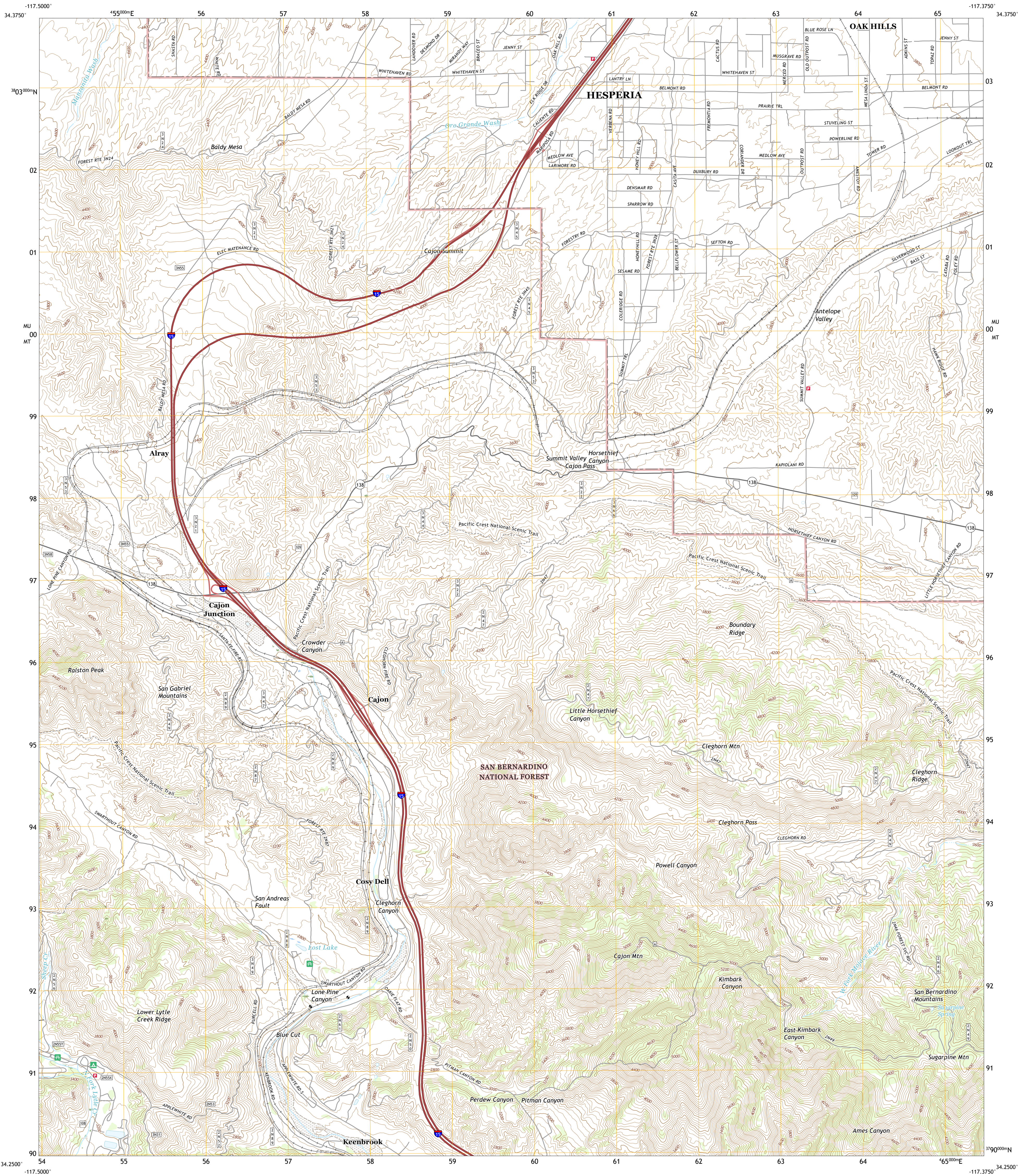




U.S. DEPARTMENT OF THE INTERIOR
U.S. GEOLOGICAL SURVEY

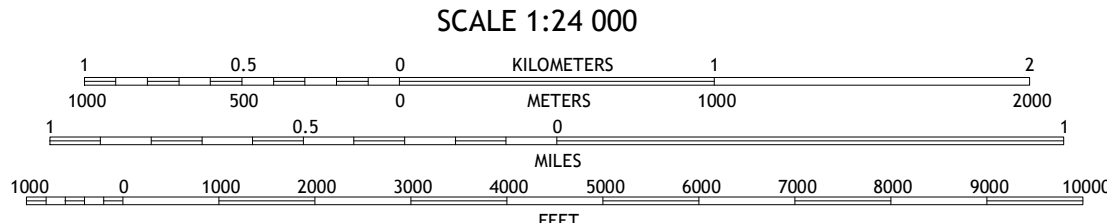
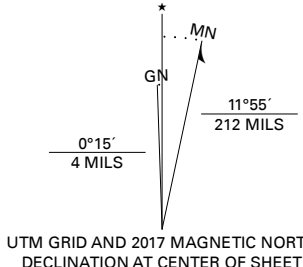


CAJON QUADRANGLE
CALIFORNIA - SAN BERNARDINO COUNTY
7.5-MINUTE SERIES



Produced by the United States Geological Survey
North American Datum of 1983 (NAD83)
World Geodetic System of 1984 (WGS84). Projection and
1 000-meter grid: Universal Transverse Mercator, Zone 11S
This map is not a legal document. Boundaries may be
generalized for this map scale. Private lands within government
reservations may not be shown. Obtain permission before
entering private lands.

Imagery.....N.A.P., May 2016 - October 2016
Roads.....U.S. Census Bureau, 2016
Data within US Forest Service Lands.....FSTopo
with limited Forest Service updates, 2018
Names.....GNS, 1981
Hydrography.....National Hydrography Dataset, 2001
Contours.....National Elevation Dataset, 1999
Boundaries.....Multiple sources: see metadata file 2016
Public Land Survey System.....BLM, 2018
Wetlands.....FWS National Wetlands Inventory 1994 - 2006



| | | |
|---|---|---|
| 1 | 2 | 3 |
| 4 | 5 | 6 |
| 7 | 8 | 9 |

1 Phelan
2 Baldy Mesa
3 Hesperia
4 Telegraph Peak
5 Silverwood Lake
6 Cucamonga Peak
7 Devore
8 San Bernardino North

| ROAD CLASSIFICATION | |
|---------------------|-------------------------|
| Expressway | Local Connector |
| Secondary Hwy | Local Road |
| Ramp | 4WD |
| Interstate Route | US Route |
| FS Primary Route | State Route |
| FS Passenger Route | FS High Clearance Route |

Check with local Forest Service unit
for current travel conditions and restrictions.

CAJON, CA
2018

