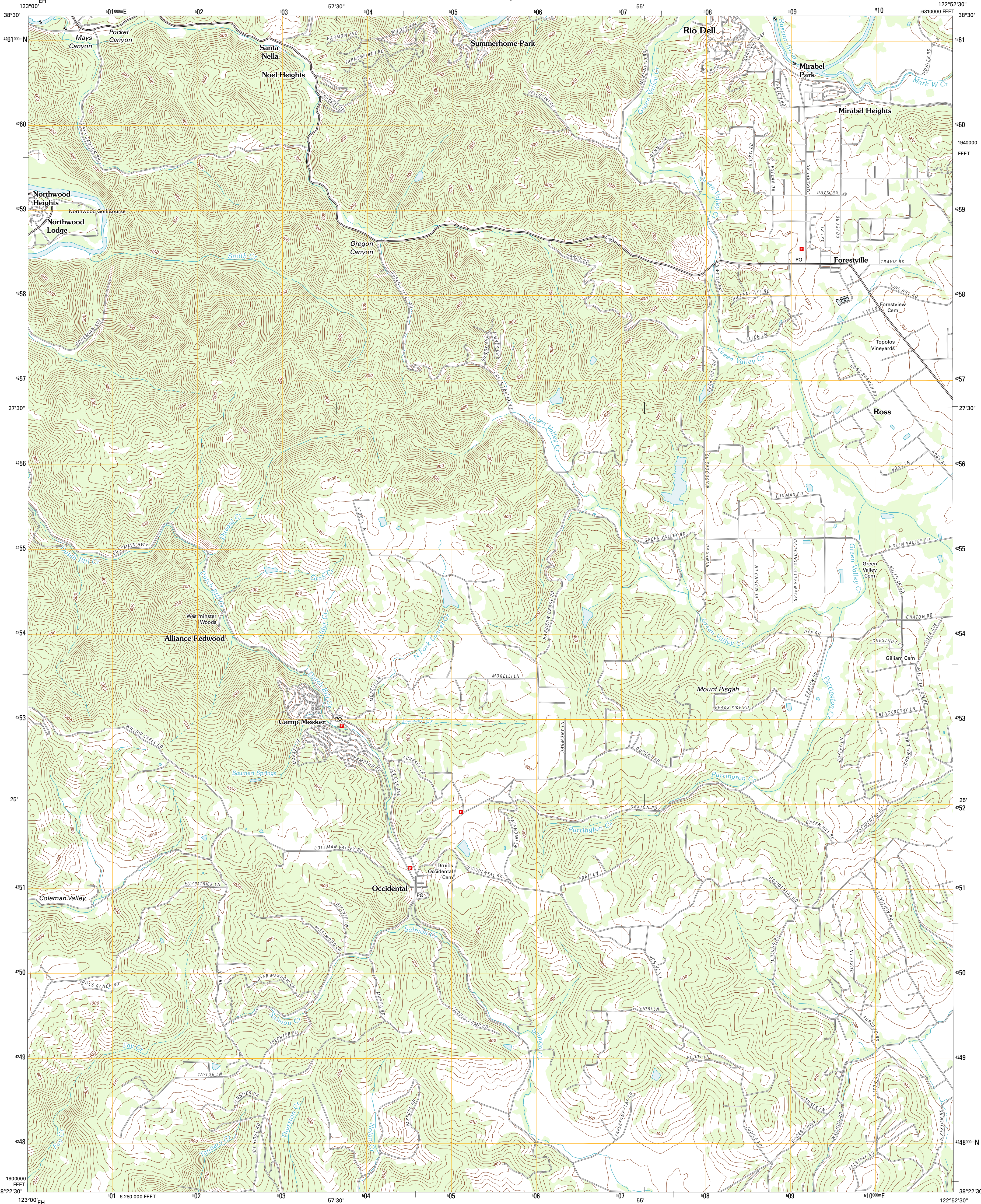




U.S. DEPARTMENT OF THE INTERIOR
U. S. GEOLOGICAL SURVEY

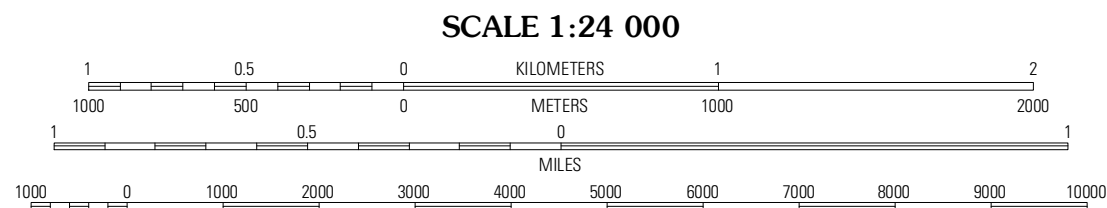
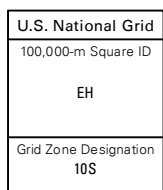
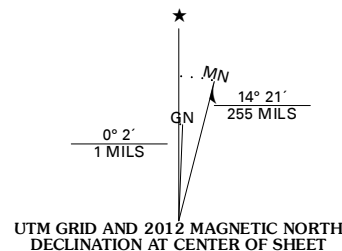


CAMP MEEKER QUADRANGLE
CALIFORNIA-SONOMA CO.
7.5-MINUTE SERIES



Produced by the United States Geological Survey
North American Datum of 1983 (NAD83)
World Geodetic System of 1984 (WGS84). Projection and
1 000-meter grid: Universal Transverse Mercator, Zone 10S
10 000-foot ticks: California Coordinate System of 1983
(zone 2)

Imagery.....NAIP, June 2010
Roads.....©2006-2011 TomTom
Names.....GNIS, 2011
Hydrography.....National Hydrography Dataset, 2010
Contours.....National Elevation Dataset, 1999
Boundaries.....Census, IBWC, IBC, USGS, 1972 - 2010



CONTOUR INTERVAL 40 FEET
NORTH AMERICAN VERTICAL DATUM OF 1988

This map was produced to conform with the
National Geospatial Program US Topo Product Standard, 2011.
A metadata file associated with this product is draft version 0.6.1



| | | |
|---------------|-------------|------------|
| Cazadero | Guemerville | Healdsburg |
| Duncans Mills | Camp Meeker | Sebastopol |
| Bodega Head | Valley Ford | Two Rock |

ADJOINING 7.5' QUADRANGLES

| ROAD CLASSIFICATION | | | |
|---------------------|------------------|------------|-------------|
| Interstate Route | State Route | Local Road | 4WD |
| US Route | State Route | Local Road | 4WD |
| Ramp | Interstate Route | US Route | State Route |

CAMP MEEKER, CA
2012