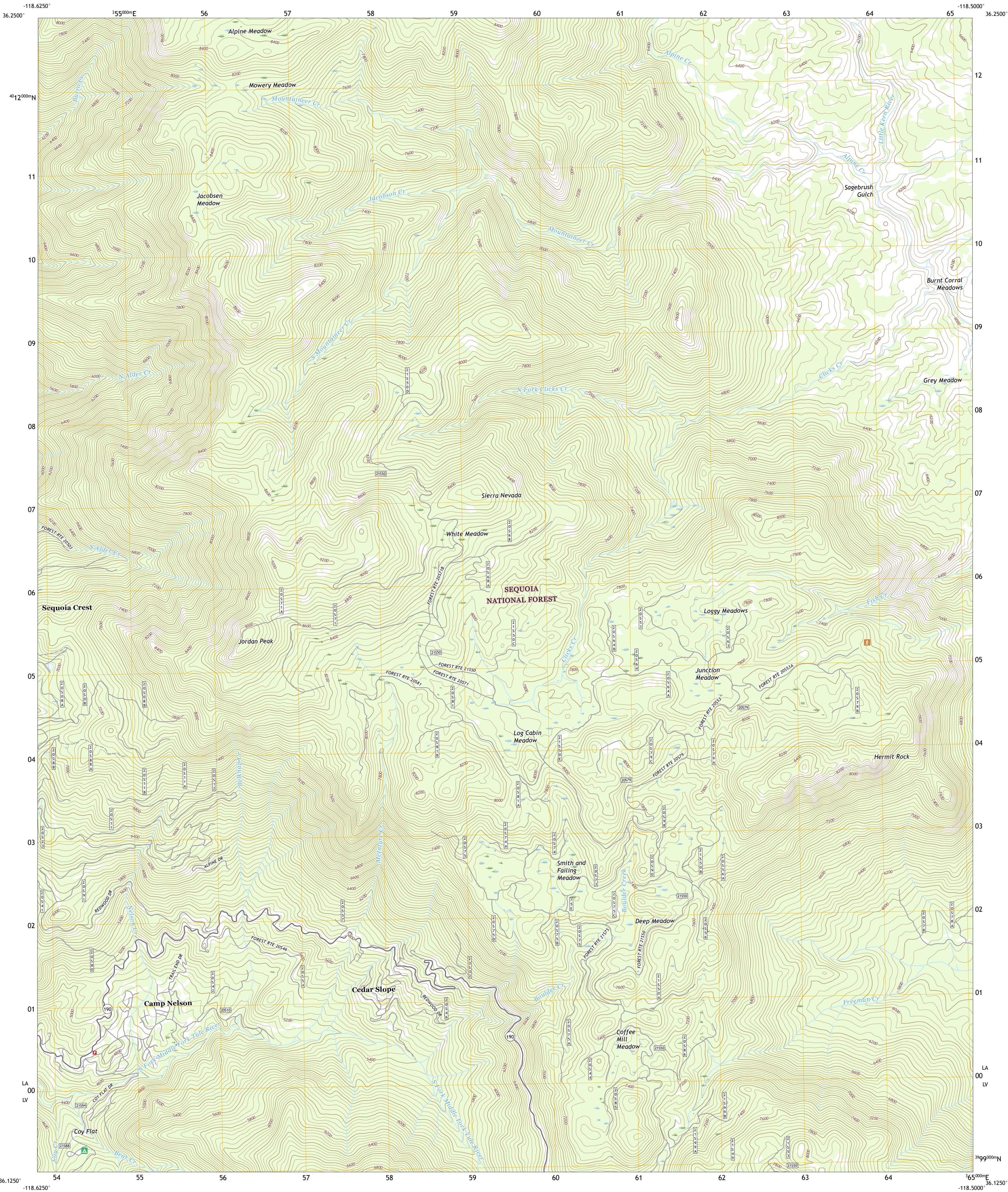




U.S. DEPARTMENT OF THE INTERIOR  
U.S. GEOLOGICAL SURVEY

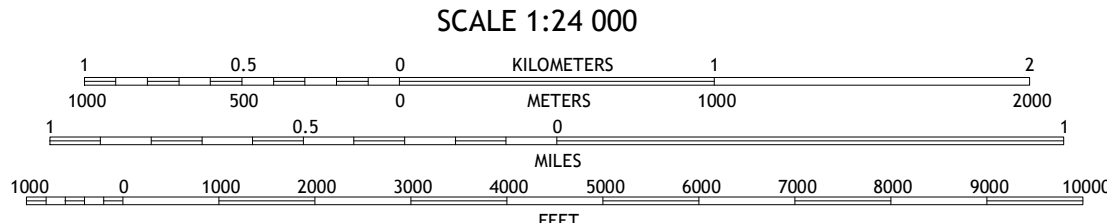
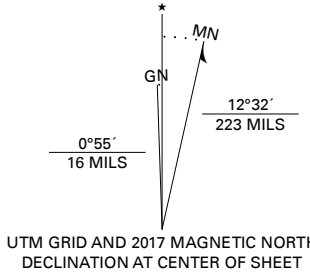


CAMP NELSON QUADRANGLE  
CALIFORNIA - TULARE COUNTY  
7.5-MINUTE SERIES



**Produced by the United States Geological Survey**  
North American Datum of 1983 (NAD83)  
World Geodetic System of 1984 (WGS84). Projection and  
1 000-meter grid: Universal Transverse Mercator, Zone 11S  
This map is not a legal document. Boundaries may be  
generalized for this map scale. Private lands within government  
reservations may not be shown. Obtain permission before  
entering private lands.

Imagery.....NAIP, July 2016 - October 2016  
Roads.....U.S. Census Bureau, 2011  
Roads within US Forest Service Lands.....FS Topo  
Data with limited Forest Service updates, 2011 - 2018  
Names.....GNIS, 1981  
Hydrography.....National Hydrography Dataset, 2001 - 2018  
Contours.....National Elevation Dataset, 2001  
Boundaries.....Multiple sources; see metadata file  
Public Land Survey System.....BLM, 2018  
Wetlands.....FWS National Wetlands Inventory 1983 - 1988



1	2	3
4	5	6
7	8	9

ADJOINING QUADRANGLES

1 Moses Mountain  
2 Quinn Peak  
3 Kern Lake  
4 Camp Wishon  
5 Hockett Peak  
6 Solo Peak  
7 Sentinel Peak  
8 Durrwood Creek

**ROAD CLASSIFICATION**

Expressway  
Secondary Hwy  
Ramp  
Interstate Route  
FS Primary Route  
FS Passenger Route  
FS High Clearance Route

Local Connector  
Local Road  
4WD  
US Route  
State Route

Check with local Forest Service unit  
for current travel conditions and restrictions.

**CAMP NELSON, CA**  
2018

