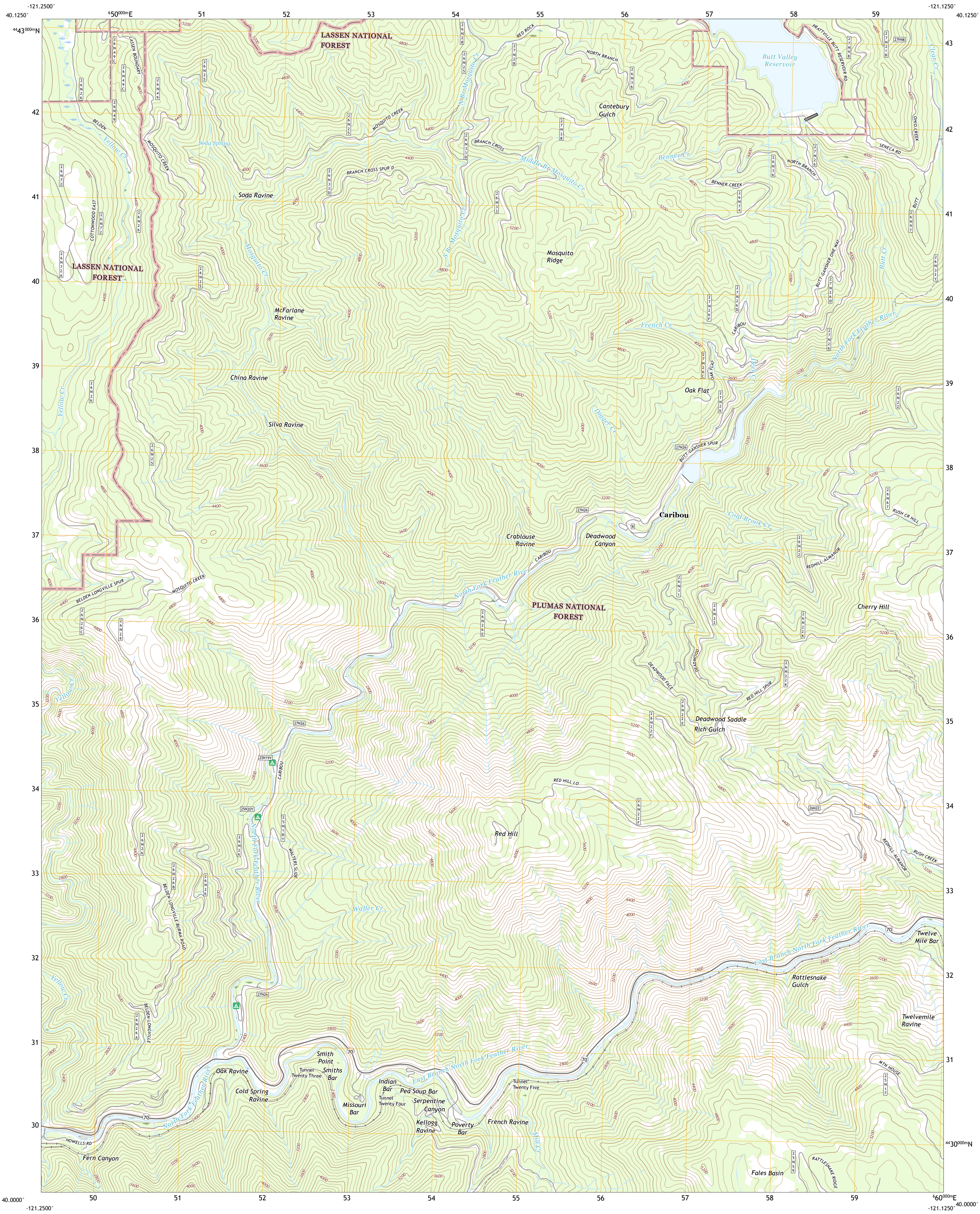




U.S. DEPARTMENT OF THE INTERIOR  
U.S. GEOLOGICAL SURVEY



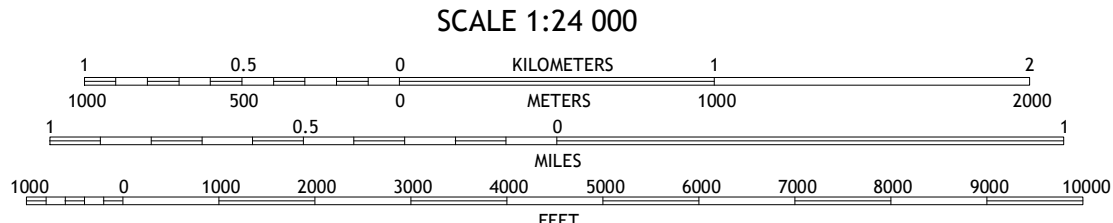
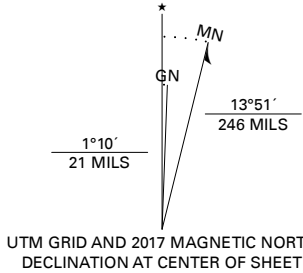
CARIBOU QUADRANGLE  
CALIFORNIA - PLUMAS COUNTY  
7.5-MINUTE SERIES



Produced by the United States Geological Survey

North American Datum of 1983 (NAD83)  
World Geodetic System of 1984 (WGS84). Projection and  
1 000-meter grid: Universal Transverse Mercator, Zone 10T105  
This map is not a legal document. Boundaries may be  
generalized for this map scale. Private lands within government  
reservations may not be shown. Obtain permission before  
entering private lands.

Imagery.....NAIP, June 2016 - October 2016  
Roads.....U.S. Census Bureau, 2018  
Roads within US Forest Service Lands.....FS Topo  
Data with limited Forest Service updates, 2018  
Names.....GNIS, 1981  
Hydrography.....National Hydrography Dataset, 2003 - 2018  
Contours.....National Elevation Dataset, 1999  
Boundaries.....Multiple sources; see  
Public Land Survey System.....BLM, 2018  
Wetlands.....FWS National Wetlands Inventory 1978 - 1981



1	2	3	1 Humbus Valley
4	5	2 Almanor	
6	7	3 Canyonland	
		4 Beiden	
		5 Twin	
		6 Storrie	
		7 Bucks Lake	
		8 Meadow Valley	

ROAD CLASSIFICATION	
Expressway	Local Connector
Secondary Hwy	Local Road
Ramp	4WD
Interstate Route	US Route
FS Primary Route	State Route
FS Passenger Route	FS High Clearance Route

Check with local Forest Service unit  
for current travel conditions and restrictions.

CARIBOU, CA  
2018

